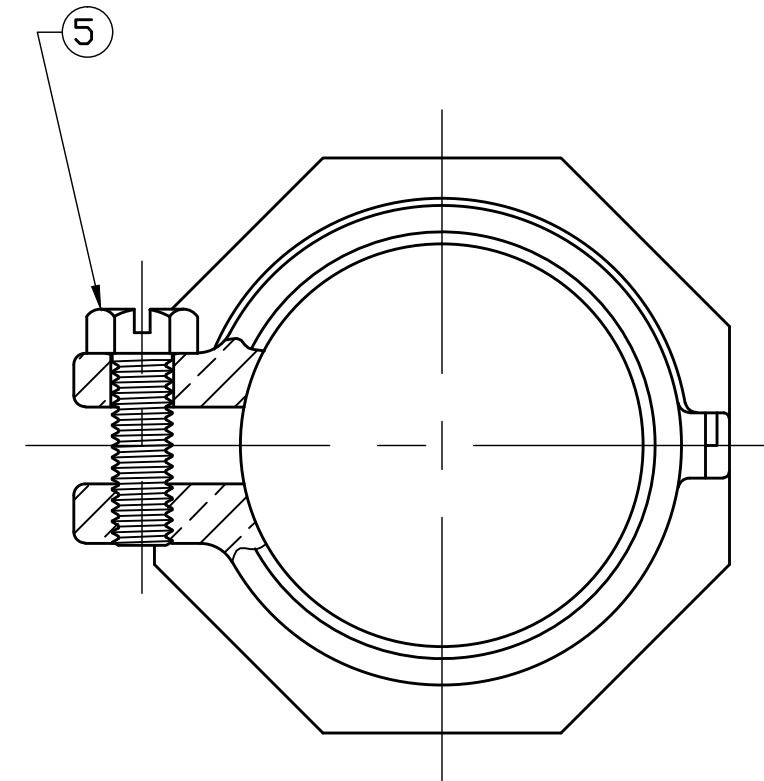
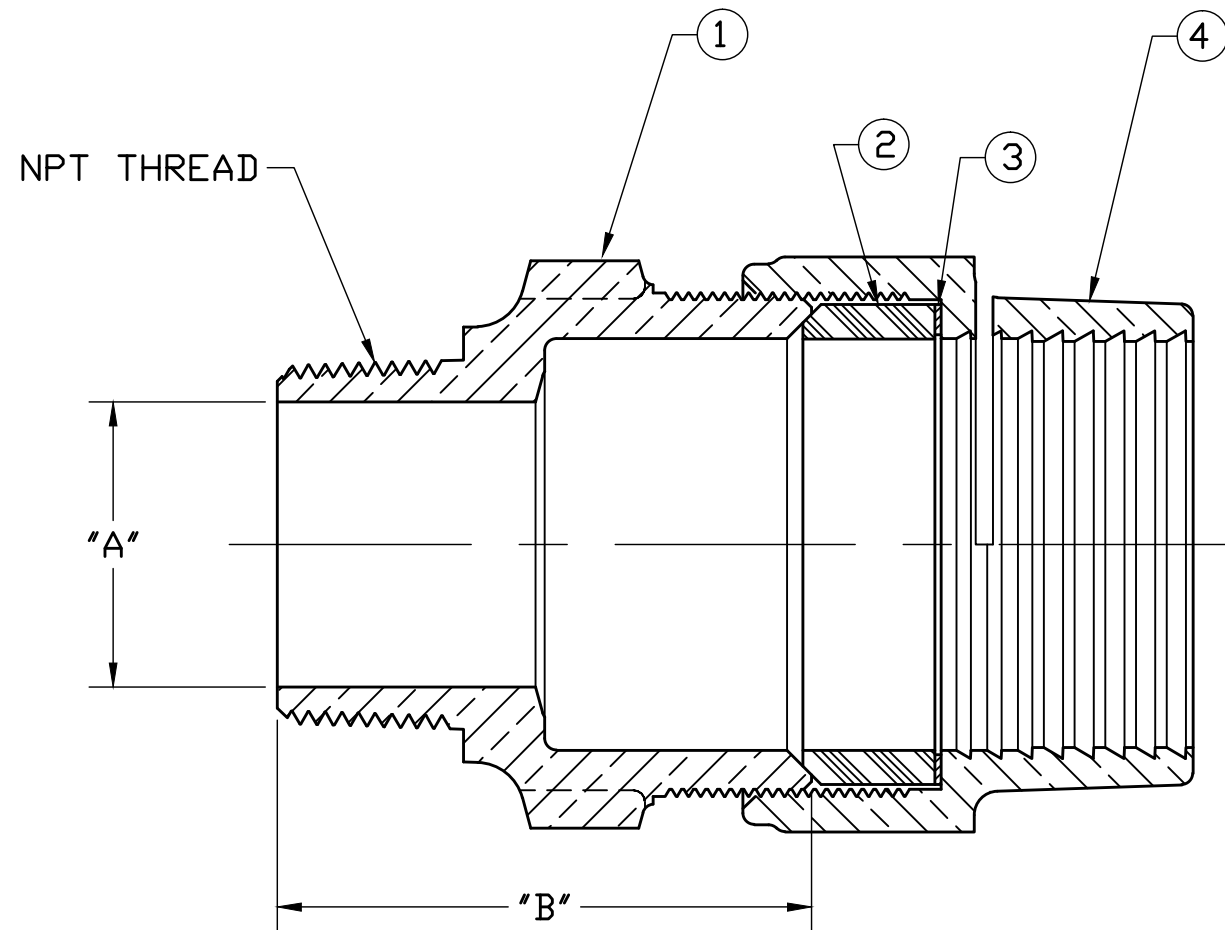


No.	DESCRIPTION	MATERIAL
1	SPUD	LOW LEAD BRASS ALLOY
2	COMP GASKET	NITRILE ASTM D2000
3	WASHER	POLYPROPYLENE
4	COUPLING NUT	CAST BRASS ASTM B62 ALLOY C83600
5	CAP SCREW	304 STAINLESS STEEL

SIZE	ØA	B
3/4"	.72	1.976
1"	.94	2.880
1x3/4"	.72	2.137
1-1/4"	.94	2.658
1-1/2"	1.48	2.750
2"	1.97	2.906



FILEPATH: PROD-ENG\MUELLER\APPROVED\E15429N

DRFTR	JGarvin	9/11/09	Mueller Co.			UNLESS OTHERWISE NOTED		THIRD ANGLE PROJECTION			
CHKR						SURFACE PREPARATION:		REF. No.		SCALE	
ENGR						BREAK CORNER(S) ---- .000		NONE			
MGR						SURFACE FINISH -- 000 RMS					
BY DATE			TOLERANCE(S):								
STK No:			LINEAR ----- ± .000								
MAT'L:			ANGULAR ----- ± 0°00'								
REV	ECR	DESCRIPTION	DATE	BY	CHKR	DESCR. SERVICE FITTING ASSEMBLY		PART NUMBER			
PER EST NO: DXXXX EST FIN WT = 0.0000 lbs						IPS PEP PACK JOINT x MIP		E15429N			

PART NUMBER
E15429N
MARKETING