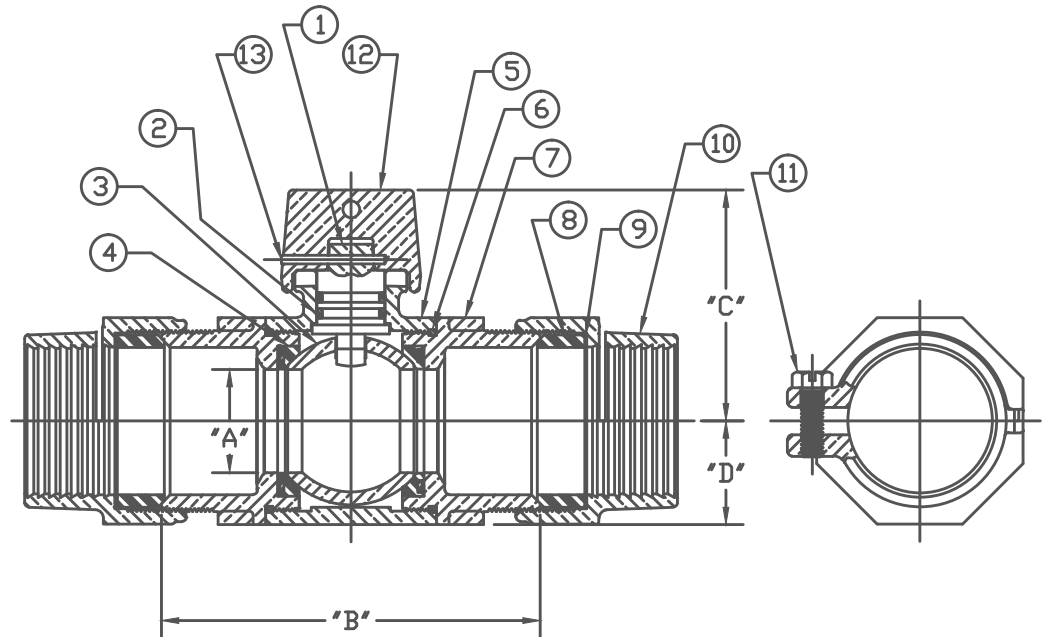


No.	DESCRIPTION	MATERIAL
1	STEM	LOW LEAD BRASS ALLOY
2	O-RING	EP ASTM D2000
3	BALL	LOW LEAD BRASS ALLOY
4	RUBBER GASKET	NITRILE ASTM D2000 w/ 410ss BAND
5	BODY	CAST LOW LEAD BRASS ALLOY
6	O-RING	EP ASTM D2000
7	END PIECE	CAST LOW LEAD BRASS ALLOY
8	COMP GASKET	NITRILE ASTM D2000
9	WASHER	POLYPROPYLENE
10	COUPLING NUT	CAST BRASS ASTM B62 ALLOY C83600
11	CAP SCREW	304 STAINLESS STEEL
12	VALVE CAP	CAST BRASS ASTM B62 ALLOY C83600
13	ROLLPIN	302 STAINLESS STEEL



NOTE: ALL WETTED PARTS ARE LOW LEAD BRASS ALLOY

FILEPATH: PROD-ENG\MUELLER\ASYSUBMITTALS\E25211N

						DRFTR\JGarvin	1/23/12	<b>Mueller Co.</b>			
						CHKR				UNLESS OTHERWISE NOTED SURFACE PREPARATION: BREAK CORNER(S) ---- .000 SURFACE FINISH -- XX RMS TOLERANCE(S): LINEAR ----- ± .000 ANGULAR ----- ± 0°00'	THIRD ANGLE PROJECTION 
						ENGR					
						MGR					
						BY	DATE	REF. No.	SCALE NONE PLOT HALF		
						STK No:					
						MAT'L:					
REV	ECR	DESCRIPTION	DATE	BY	CHKR	DESCR. INLINE BALL CURB VALVE - LLB (PEP\PVC\IPS) PACK JOINT ENDS			PART NUMBER E25211N		
PER EST NO: XXXX EST FIN WT = 0.0000 lbs											

SIZE	ØA	B	C	D
3/4"	.75	4.23	2.34	.84
1"	1.00	4.23	2.59	1.15
1-1/2"	1.50	5.50	3.38	1.50
2"	2.00	6.57	3.92	1.82

PART NUMBER  
E25211N  
442-MRKTG