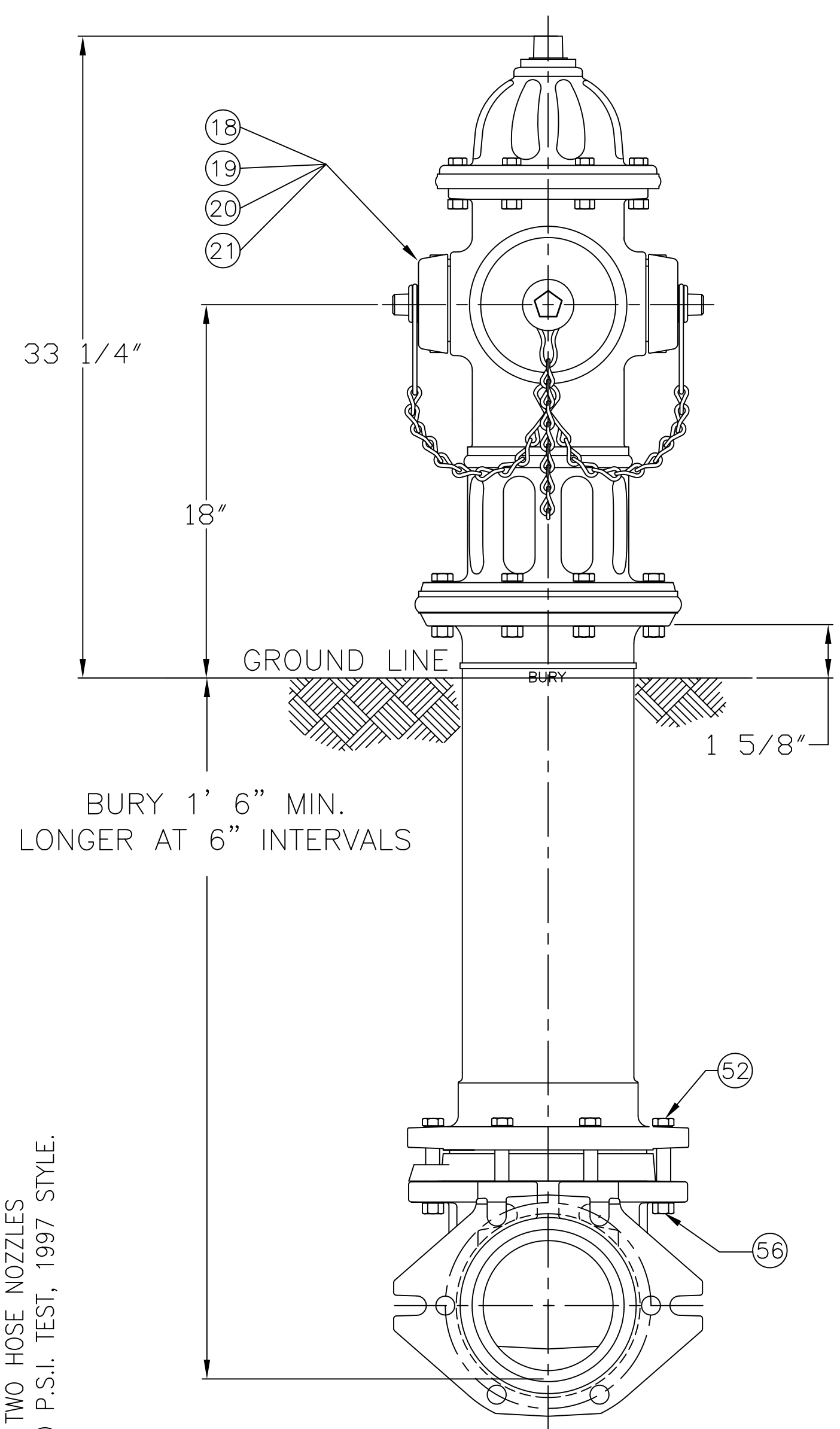


5 1/4" A463 SUPER CENTURION "250" W/ TWO HOSE NOZZLES & ONE PUMPER NOZZLE - 250 P.S.I. W.P. - 500 P.S.I. TEST, 1997 STYLE.

DWG. FH. 155



PARTS LIST				
ITEM	DESCRIPTION	REQ'D	MATERIAL	A.S.T.M.
1	OPERATING NUT	1	BRONZE B-584	ALLOY 844
2	WIPER RING	1	RUBBER D-2000	R 33
3	HOLD DOWN NUT "O" RING	1	RUBBER D-2000	BUNA N
4	HOLD DOWN NUT	1	BRONZE B-584	ALLOY 844
5	BONNET "O" RING	1	RUBBER D-2000	BUNA N
6	ANTI-FRICTION WASHER	1	PLASTIC	CELCON
7	OIL FILLER PLUG	1	BRASS B-16	ALLOY 360
8	BONNET	1	CAST IRON A-126	CLASS B
9	BONNET BOLT	8	STEEL A-307	ELECTROGALV. GR. B
10	TOP UPPER BARREL O-RING	1	RUBBER D-2000	BUNA N
11	UPPER STEM	1	CARBON STEEL A-576	GR 1144T
12	STEM "O" RING (UPPER)	1	RUBBER D-2000	BUNA N
13	NOZZLE LOCK	3	STAINLESS STEEL A-276	305 OR 410
14	PUMPER NOZZLE	1	BRONZE B-584	ALLOY 844
15	PUMPER NOZZLE CAP GASKET	1	RUBBER D-2000	R 51
16	PUMPER NOZZLE "O" RING	1	RUBBER D-2000	BUNA N
17	PUMPER NOZZLE CAP	1	CAST IRON A-126	CLASS B
18	HOSE NOZZLE	2	BRONZE B-584	ALLOY 844
19	HOSE NOZZLE CAP GASKET	2	RUBBER D-2000	R 51
20	HOSE NOZZLE "O" RING	2	RUBBER D-2000	BUNA N
21	HOSE NOZZLE CAP	2	CAST IRON A-126	CLASS B

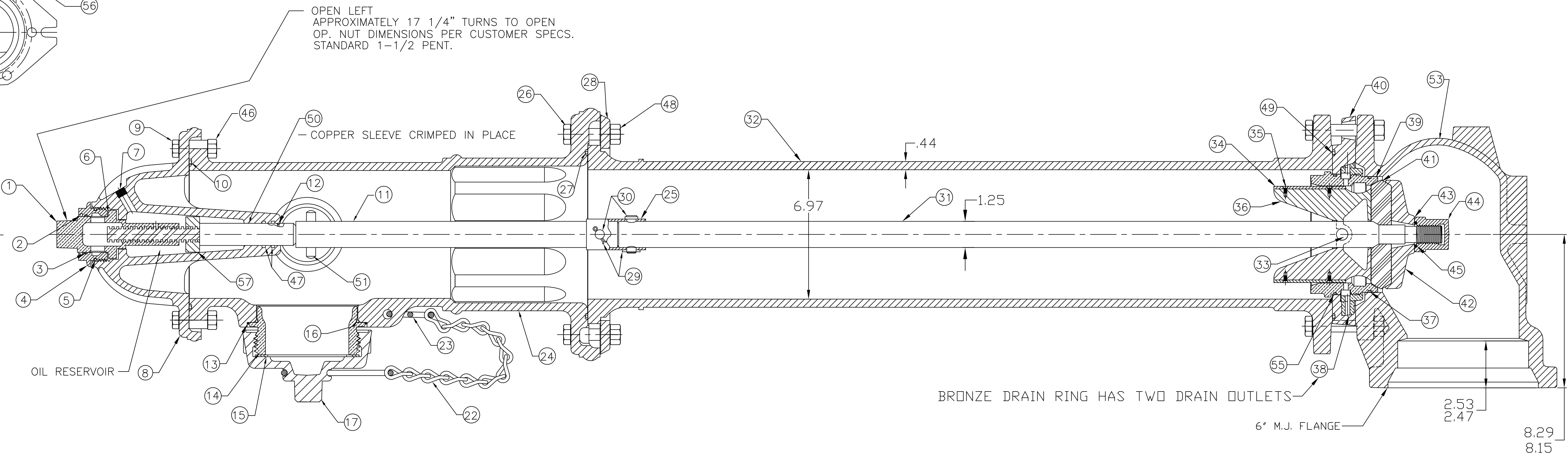
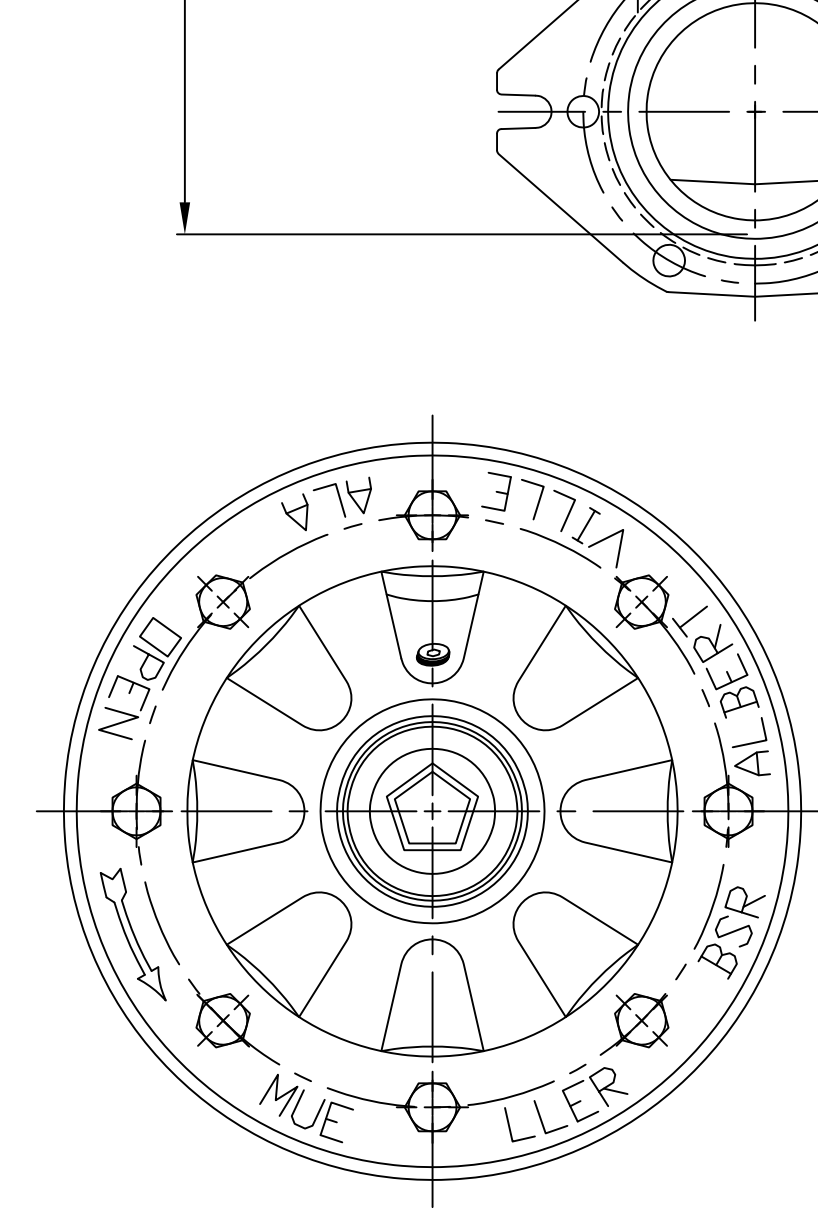
SEE CAT. RECORD FOR RESPECTIVE PARTS OR SUB. ASS'YS

ITEM	DESCRIPTION	REQ'D	MATERIAL	A.S.T.M.
22	CHAINS	3	STEEL	
23	CHAIN CONNECTOR HOOK	1	STEEL	
24	UPPER BARREL	1	CAST IRON A-126	CLASS B
25	SAFETY STEM COUPLING	1	STAINLESS STEEL A-890	1.5% SILICON MAX.
26	SAFETY FLANGE BOLT	8	STEEL A-307	ELECTROGALV. GR. B
27	BOTTOM UPPER BARREL O-RING	1	RUBBER D-2000	BUNA N
28	SAFETY FLANGE	1	CAST IRON A-126	CLASS B
29	COTTER PIN	2	STAINLESS STEEL A-276	302
30	CLEVIS PIN	2	STAINLESS STEEL A-276	305
31	LOWER STEM	1	CARBON STEEL A-576	GR 1144T
32	LOWER BARREL	1	CAST IRON A-126	CLASS B
33	STEM PIN	1	STAINLESS STEEL A-276	302
34	DRAIN VALVE FACING	2	PLASTIC	H.D. POLYETHYLENE
35	DRAIN VALVE FACING SCREW	4	STAINLESS STEEL A-276	302
36	UPPER VALVE PLATE	1	BRONZE B-584	ALLOY 844
37	BOTTOM SEAT "O" RING	1	RUBBER D-2000	BUNA N
38	DRAIN RING	1	BRONZE B-584	ALLOY 844
39	SEAT RING	1	BRONZE B-584	ALLOY 844
40	DRAIN RING HOUSING	1	CAST IRON A-126	CLASS B
41	MAIN VALVE	1	RUBBER D-2000	R-44
42	LOWER VALVE PLATE	1	CAST IRON A-126	CLASS B
43	LOCK WASHER	1	STAINLESS STEEL A-276	302

ITEM	DESCRIPTION	REQ'D	MATERIAL	A.S.T.M.	
44	VALVE NUT	1	CAST IRON A-126		CLASS B
45	VALVE NUT SEAL	1	RUBBER		R-32
46	BONNET NUT	8	STEEL		ELECTRO. GALV.
47	STEM O-RING	2	RUBBER D-2000		BUNA N
48	SAFETY FLANGE NUT	8	STEEL		ELECTRO. GALV.
49	DRAIN RING HOUSING O-RING	1	RUBBER D-2000		BUNA N
50	SLEEVE	1	COPPER B-75		ALLOY 122
51	UPPER STEM PIN	1	STAINLESS STEEL A-276		302
52	HEX BOLT	6	STEEL A-307		ELECTROGALV. GR. B
53	SHOE	1	CAST IRON A-126		CLASS B
54	PIPE GLAND	1	CAST IRON A-126		CLASS B
55	TOP SEAT O-RING	1	RUBBER D-2000		BUNA N
56	HEX NUT	6	STEEL A-307		ELECTROGALV. GR. B
* 58	MECH. JOINT GASKET	1	RUBBER D-2000		R-42
* 59	T-HEAD BOLT	6	STEEL A-242		TYPE 1
* 60	HEX NUT	6	STEEL A-242		TYPE 1

* NOT SHOWN

NOTE: SIZE AND STYLE OF OPERATING NUT, SHOE SIZE, AND THREADING OF NOZZLES IS PER CUSTOMER SPECS.



REV.	DESCRIPTION	REF.	DRFTK	CHKR	APP	DATE
B	REVISE ITEMS #11 & 31		MRG			3-13-12
A	REVISE ITEMS # 11 & 31		ANC			11-30-09

(MILLIMETER) INCH INITIAL RELEASE DRFTK: ANC 3-6-07 CHK'R: APP: CJD 3-6-07 E.O. NUMBER:	TOLERANCES - MACHINING UNLESS OTHERWISE NOTED BREAK EDGES MACH. .006/.016 FINISH SURFACES 125 FRACTIONS ±1/64 DECIMALS 2 PL ±.025 3 PL ±.005 ANGLES ±1°	THIRD ANGLE PROJECTION PURCH. FINISH REF. NO. N.T.S. STK. NO. SEE TABLE
MAT'L 	SEE TABLE DESCR. 5 1/4" SUPER CENTURION "250" W/ TWO HOSE NOZZLES & ONE PUMPER NOZZLE A463 (1997 STYLE)	REVISION B NUMBER FH 155 SHEET 1 OF 1