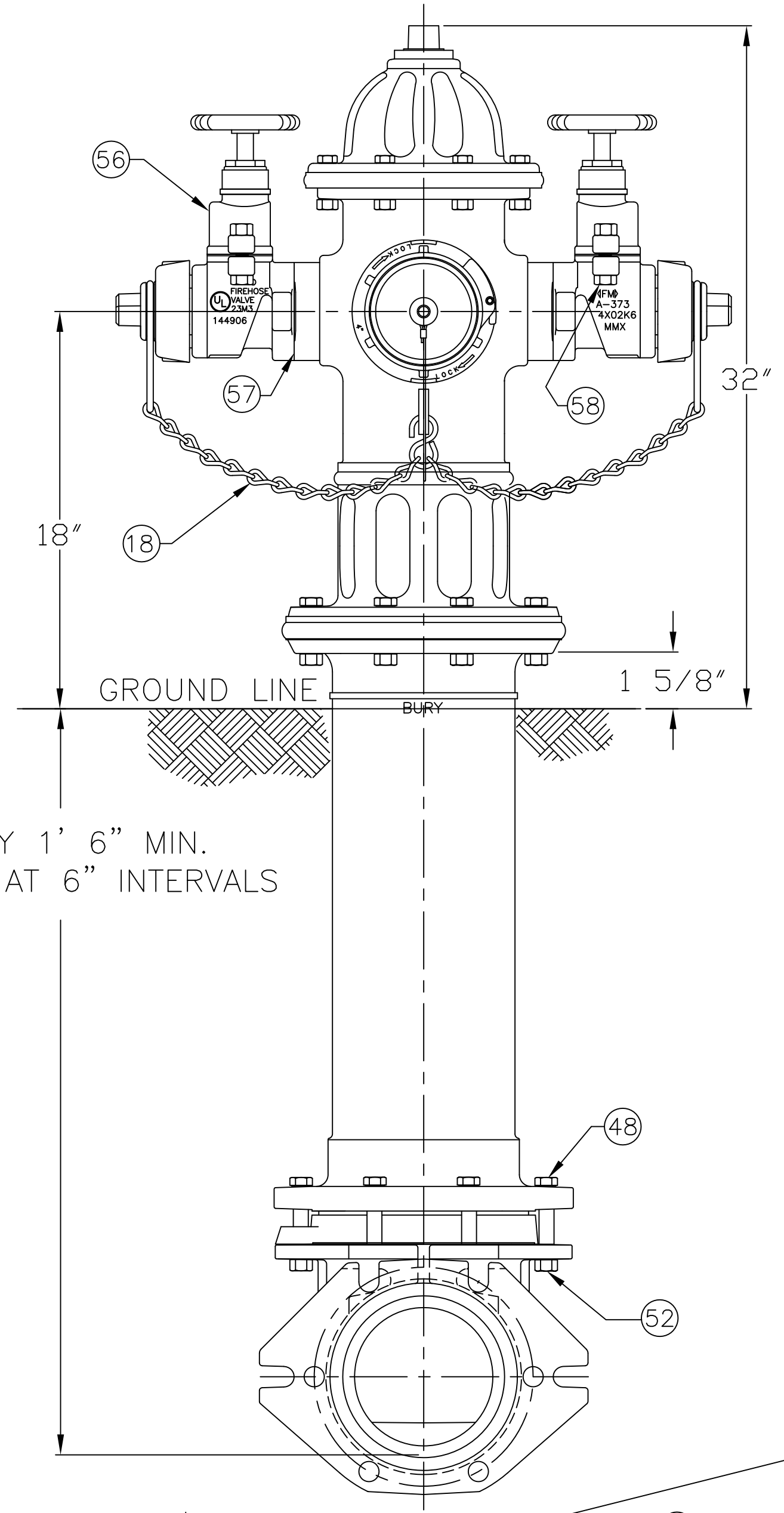


4 1/2" A421 & 5 1/4" A423 SUPER CENTURION w/ OPTION 370 (TWO HOSE GATE VALVES)
 & ONE 4" STORZ NOZZLE - 250 P.S.I. W.P. - 500 P.S.I. TEST, 1997 STYLE.

DWG. FH 265



PARTS LIST				
ITEM	DESCRIPTION	REQ'D	MATERIAL	A.S.T.M.
1	OPERATING NUT	1	BRONZE	B-62 ALLOY C86300
2	WIPER RING	1	RUBBER	D-2000 EPDM
3	HOLD DOWN NUT O-RING	1	RUBBER	D-2000 BUNA N
4	HOLD DOWN NUT	1	BRONZE	B-62 ALLOY C86300
5	BONNET O-RING	1	RUBBER	D-2000 BUNA N
6	ANTI-FRICTION WASHER	1	CELCON	GRADE M90-04
7	OIL FILLER PLUG	1	BRASS	B-16 ALLOY 360
8	BONNET	1	CAST IRON	A-126 CLASS B
9	HEX BOLT	8	STEEL	A-307 ELECTROGALV. GR. B
10	TOP UPPER BARREL O-RING	1	RUBBER	D-2000 BUNA N
11	UPPER STEM	1	CARBON STEEL	A-576 GR 1144T
12	STEM O-RING	1	RUBBER	D-2000 BUNA N
13	GASKET	1	RUBBER	D-2000
14	4" STORZ PUMPER NOZZLE	1	MANG. BRONZE	B-584 C86300
15	STORZ CAP CABLE	1	STAINLESS STEEL	
16	PUMPER NOZZLE O-RING	1	RUBBER	D-2000 BUNA N
17	4" STORZ PUMPER CAP	1	ALUMINUM	B-108 ALLOY 356-T6
18	CAP CHAIN	2	STEEL	ELECTRO GALV.
19	CHAIN HOOK	1	STEEL	ELECTRO GALV.
20	UPPER BARREL	1	CAST IRON	A-126 CLASS B
21	SAFETY STEM COUPLING	1	STAINLESS STEEL	A-890 1.5% SILICON MAX.

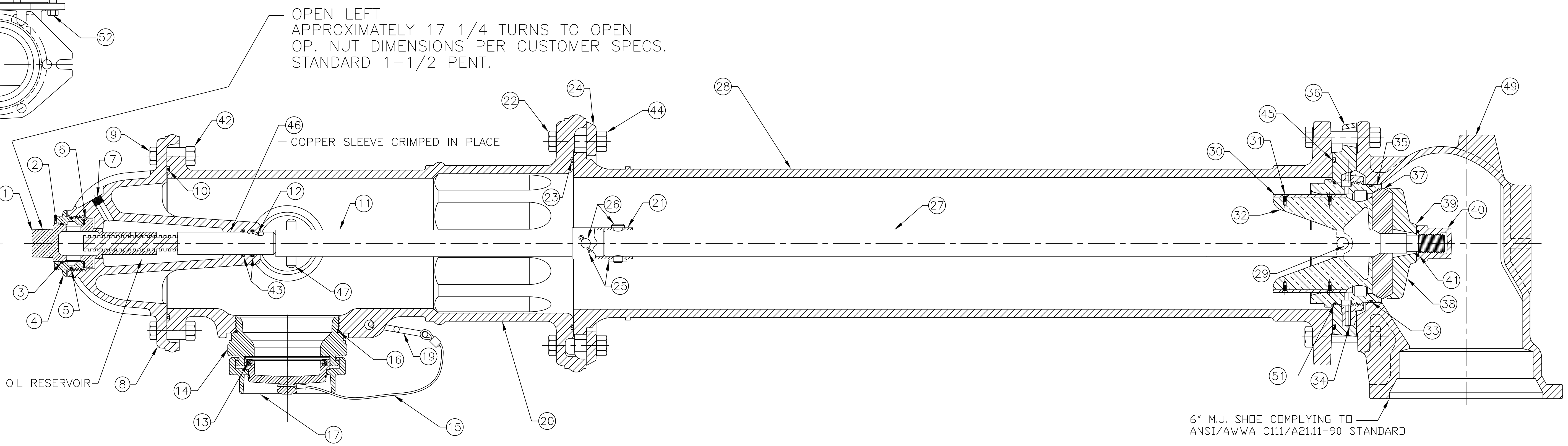
ITEM	DESCRIPTION	REQ'D	MATERIAL	A.S.T.M.
22	SAFETY FLANGE BOLT	8	STEEL	A-307 ELECTROGALV. GR. B
23	BOTTOM UPPER BARREL O-RING	1	RUBBER	D-2000 BUNA N
24	SAFETY FLANGE	1	CAST IRON	A-126 CLASS B
25	COTTER PIN	2	STAINLESS STEEL	A-276 302
26	CLEVIS PIN	2	STAINLESS STEEL	A-276 305
27	LOWER STEM	1	CARBON STEEL	A-576 GRADE 1144T
28	LOWER BARREL	1	CAST IRON	A-126 CLASS B
29	STEM PIN	1	STAINLESS STEEL	A-276 302
30	DRAIN VALVE FACING	2	H.D. POLYETHYLENE	LS 5660-00
31	DRAIN VALVE FACING SCREW	4	STAINLESS STEEL	A-276 302
32	UPPER VALVE PLATE	1	BRONZE	B-62 ALLOY C86300
33	BOTTOM SEAT O-RING	1	RUBBER	D-2000 BUNA N
34	DRAIN RING	1	BRONZE	B-62 ALLOY C86300
35	SEAT RING	1	BRONZE	B-62 ALLOY C86300
36	DRAIN RING HOUSING	1	CAST IRON	A-126 CLASS B
37	MAIN VALVE	1	RUBBER	D-2000 NATURAL
38	LOWER VALVE PLATE	1	CAST IRON	A-126 CLASS B
39	LOCK WASHER	1	STAINLESS STEEL	A-276 302
40	VALVE NUT	1	CAST IRON	A-126 CLASS B
41	VALVE NUT SEAL	1	RUBBER	NITRILE
42	HEX NUT	8	STEEL	ELECTRO. GALV.
43	STEM O-RING	2	RUBBER	D-2000 BUNA N

ITEM	DESCRIPTION	REQ'D	MATERIAL	A.S.T.M.
44	SAFETY FLANGE NUT	8	STEEL	A.S.T.M. ELECTRO. GALV.
45	DRAIN RING HOUSING O-RING	1	RUBBER	D-2000 BUNA N
46	SLEEVE	1	COPPER	B-75 ALLOY 122
47	UPPER STEM PIN	1	STAINLESS STEEL	A-276 302
48	HEX BOLT	6	STEEL	A-307 ELECTROGALV. GR. B
49	SHOE	1	DUCTILE IRON	A536 65-45-12
* 50	PIPE GLAND	1	CAST IRON	A-126 CLASS B
51	TOP SEAT O-RING	1	RUBBER	D-2000 BUNA N
52	HEX NUT	6	STEEL	A-307 ELECTROGALV. GR. B
* 53	MECH. JOINT GASKET	1	RUBBER	D-2000 NATURAL
* 54	T-HEAD BOLT	6	STEEL	A-242 TYPE 1
* 55	HEX NUT	6	STEEL	A-242 TYPE 1
56	HOSE GATE VALVE	2	CAST IRON	A-126 CLASS B
57	GASKET	2	RUBBER	
58	BOLT	4	STEEL	A-242 TYPE 1

SEE CAT. RECORD FOR RESPECTIVE PARTS OR SUB. ASS'YS

* NOT SHOWN

NOTE: SIZE AND STYLE OF OPERATING NUT, SHOE SIZE, AND THREADING OF NOZZLES IS PER CUSTOMER SPECS.



6" M.J. SHOE COMPLYING TO ANSI/AWWA C111/A21.11-90 STANDARD

B	REVISE MATERIAL ON ITEM #14	ANC	1-23-13
A	REVISED ITEMS #11 & 27	MRG	3-19-12
REV.	DESCRIPTION	REF.	DRFTR
		CHKR	APP
			DATE

(MILLIMETER) INCH INITIAL RELEASE DRFT'R ANC 2-2-10 CHK'R APP E.O. NUMBER	TOLERANCES - MACHINING UNLESS OTHERWISE NOTED BREAK EDGES MACH. .006/.016 FINISH SURFACES 125 FRACTIONS ±1/64 DECIMALS 2 PL ±.025 3 PL ±.005 ANGLES ±1°	THIRD ANGLE PROJECTION PURCH. FINISH REF. NO. SCALE N.T.S. STK. NO.
MAT'L SEE TABLE DESC'R 4 1/2" A421 & 5 1/4" A423 CENTURION w/ TWO HOSE GATE VALVES (OPTION 370) & ONE 4" STORZ NOZZLE 1997 STYLE		REVISION NUMBER B FH 265 SHEET 1 OF 1