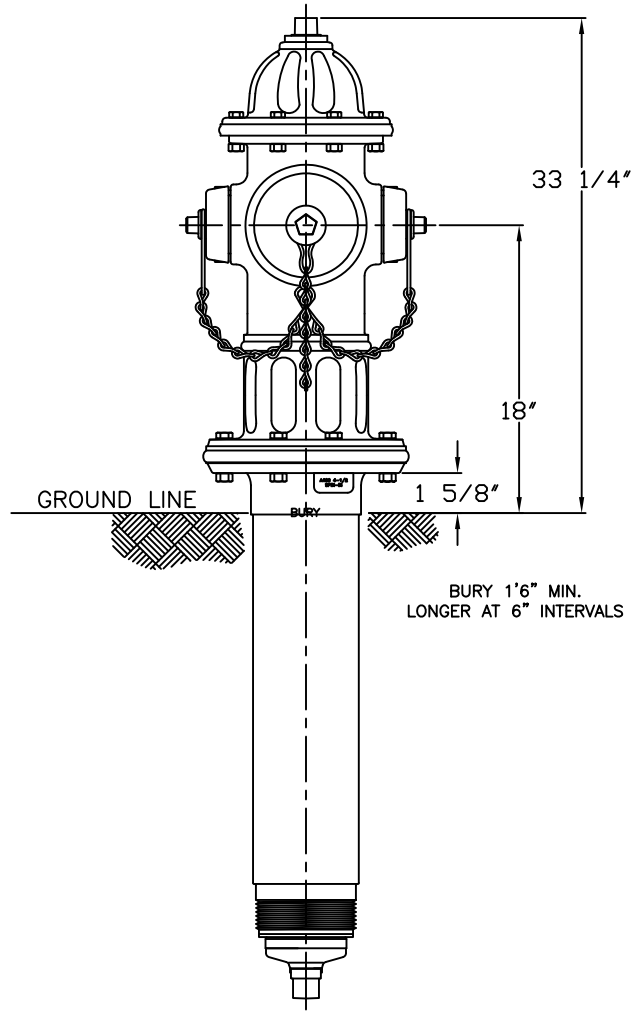


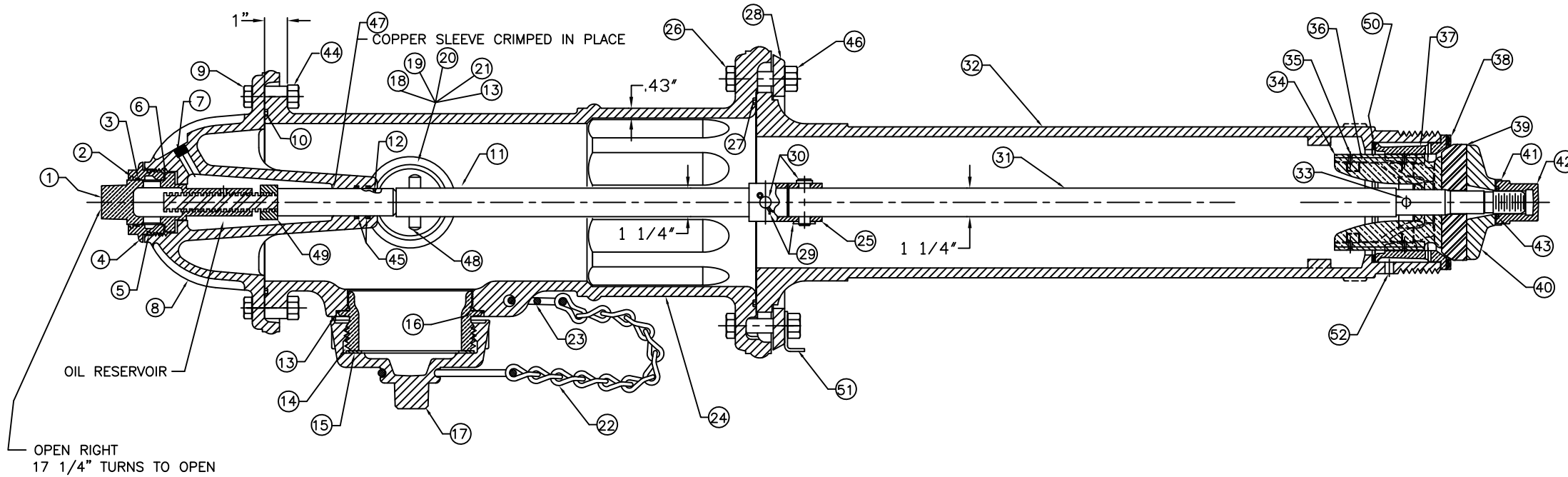
4 1/2" A466 & 5 1/4" A467 CENTURION W/ TWO HOSE NOZZLES & ONE PUMPER NOZZLE
250 P.S.I. W.P. - 500 P.S.I. TEST, RD SPIN-IN HYDRANT



PARTS LIST				
ITEM	DESCRIPTION	REQ'D	MATERIAL	ASTM
1	OPERATING NUT	1	BRONZE	B-584 ALLOY C83600
2	WIPER RING	1	RUBBER	D-2000 R 33
3	HOLD DOWN NUT "O" RING	1	RUBBER	D-2000 R 34
4	HOLD DOWN NUT	1	BRONZE	B-584 ALLOY C83600
5	BONNET "O" RING	1	RUBBER	D-2000 R 34
6	ANTI-FRICTION WASHER	1	PLASTIC	CELCON
7	OIL FILLER PLUG	1	BRASS	B-16 ALLOY 360
8	BONNET	1	CAST IRON	A-126 CLASS B
9	BONNET BOLT	8	STEEL	A-307 ELECTROGALV. GR. B
10	TOP UPPER BARREL O-RING	1	RUBBER	D-2000 R 34
11	UPPER STEM	1	CARBON STEEL	A-576 GR 1144T
12	STEM "O" RING (UPPER)	1	RUBBER	D-2000 R 34
13	NOZZLE LOCK	3	STAINLESS STEEL	A-276 305 OR 410
14	PUMPER NOZZLE	1	BRONZE	B-584 ALLOY C89833
15	PUMPER NOZZLE CAP GASKET	1	RUBBER	D-2000 R 51
16	PUMPER NOZZLE "O" RING	1	RUBBER	D-2000 R 34
17	PUMPER NOZZLE CAP	1	CAST IRON	A-126 CLASS B
18	HOSE NOZZLE	2	BRONZE	B-584 ALLOY C89833
19	HOSE NOZZLE CAP GASKET	2	RUBBER	D-2000 R 51
20	HOSE NOZZLE "O" RING	2	RUBBER	D-2000 R 34
21	HOSE NOZZLE CAP	2	CAST IRON	A-126 CLASS B

ITEM	DESCRIPTION	REQ'D	MATERIAL	ASTM
22	CAP CHAIN	3	STEEL	ELECTRO GALV.
23	CHAIN CONN. HOOK	1	STEEL	ELECTRO GALV.
24	UPPER BARREL	1	CAST IRON	A-126 CLASS B
25	SAFETY STEM COUPLING	1	STAINLESS STEEL	A-890 GRADE 4A
26	SAFETY FLANGE BOLT	8	STEEL	A-307 ELECTROGALV. GR. B
27	LOWER UPPER BARREL O-RING	1	RUBBER	D-2000 R 34
28	SAFETY FLANGE	1	CAST IRON	A-126 CLASS B
29	COTTER PIN	2	STAINLESS STEEL	A-276 302
30	CLEVIS PIN	2	STAINLESS STEEL	A-276 305
31	LOWER STEM	1	STEEL	A-576 GR B
32	LOWER BARREL	1	CAST IRON	A-126 CLASS B
33	STEM PIN	1	STAINLESS STEEL	A-276 302
34	DRAIN VALVE FACING	2	PLASTIC	H.D. POLYETHYLENE
35	DRAIN VALVE FACING SCREW	4	STAINLESS STEEL	A-276 302
36	UPPER VALVE PLATE	1	BRONZE	B-584 ALLOY C89833
37	SEAT	1	BRONZE	B-584 ALLOY C89833
38	SEAT RING GASKET (BTM)	1	RUBBER	D-2000 R-32
39	MAIN VALVE	1	RUBBER	D-2000 R-44
40	LOWER VALVE PLATE	1	CAST IRON	A-126 CLASS B
41	LOCK WASHER	1	STAINLESS STEEL	A-276 302
42	VALVE NUT	1	CAST IRON	A-126 CLASS B
43	VALVE NUT SEAL	1	RUBBER	R-32

ITEM	DESCRIPTION	REQ'D	MATERIAL	ASTM
44	BONNET NUT	8	STEEL	ELECTRO. GALV.
45	STEM O-RING	2	RUBBER	R-34
46	SAFETY FLANGE NUT	8	STEEL	ELECTRO. GALV.
47	SLEEVE	1	COPPER	B-75 ALLOY 122
48	UPPER STEM PIN	1	STAINLESS STEEL	A-276 302
49	STOP NUT	1	DUCTILE IRON	A-395
50	SEAT RING GASKET (TOP)	1	RUBBER	D-2000 R-32
51	IDENTIFICATION TAG	1	STAINLESS STEEL	A-276 302
52	DRAIN TUBE	1	COPPER	B-88 ALLOY 122



DWG. FH 95

REV.	DESCRIPTION	REF.	DATE
D	REVISED ITEMS 1, 4, 14, 18, 36, 37, & 42	JMG	11-8-13
C	REVISED MATERIAL ON ITEM #11	MRG	2-24-12
B	REVISED MATERIAL ON ITEM # 11	ANC	11-6-09
A	ADDED A467 5-1/4 TO DRAWING	ANC	3-13-07
		CJD	

(MILLIMETER) INCH INITIAL RELEASE DWG'N CJD 9-17-98 CHK'N APP JMG 9-17-98 E.O. NUMBER	TOLERANCES - MACHINING UNLESS OTHERWISE NOTED BREAK EDGES MACH. .006/.016 FINISH SURFACES 125 FRACTIONS ±1/64 DECIMALS 2 PL ±.025 3 PL ±.010 ANGLES ±1°	THIRD ANGLE PROJECTION PURCH. FINISH REF. NO. SCALE N.T.S. STK. NO.
 MAT'L SEE TABLE DESCR. RD WOOD SPIN-IN HYDRANT 4 1/2" A466 & 5 1/4" A467	REVISION D NUMBER FH 95 SHEET 1 OF 1	