

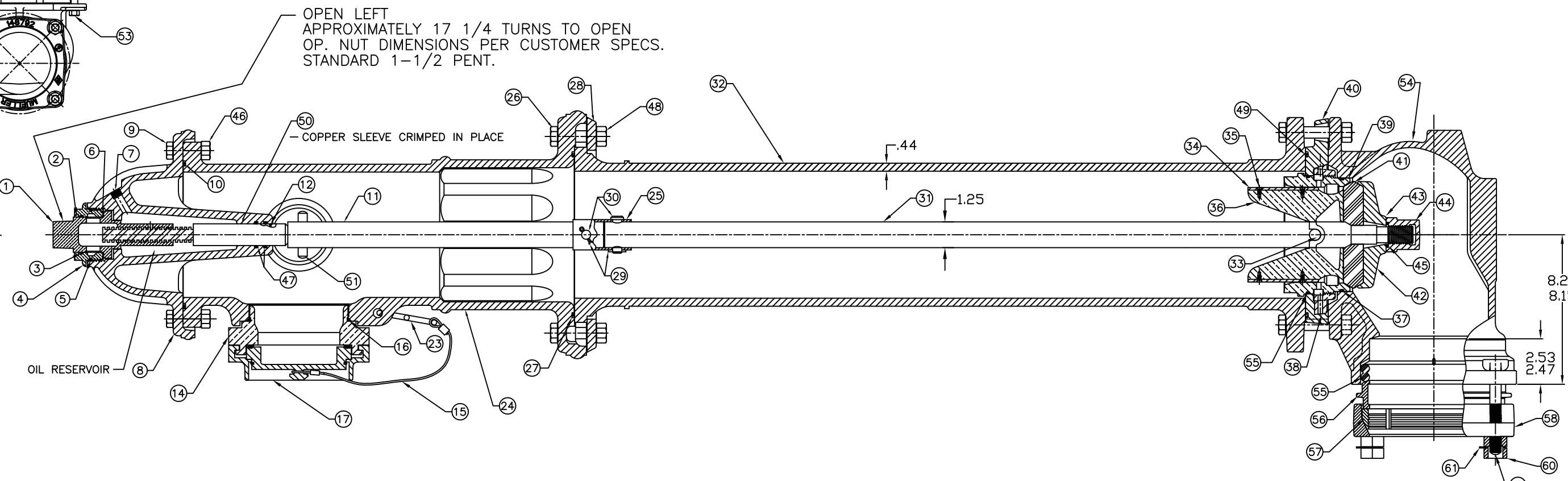
PARTS LIST				
ITEM	DESCRIPTION	REQ'D	MATERIAL	A.S.T.M.
1	OPERATING NUT	1	BRONZE	B-584 ALLOY C83600
2	WIPER RING	1	RUBBER	D-2000 EPDM
3	HOLD DOWN NUT O-RING	1	RUBBER	D-2000 BUNA N
4	HOLD DOWN NUT	1	BRONZE	B-584 ALLOY C83600
5	BONNET O-RING	1	RUBBER	D-2000 BUNA N
6	ANTI-FRICTION WASHER	1	CELCON	GRADE M90-04
7	OIL FILLER PLUG	1	BRASS	B-16 ALLOY 360
8	BONNET	1	CAST IRON	A-126 CLASS B
9	HEX BOLT	8	STEEL	A-307 ELECTROGALV. GR. B
10	TOP UPPER BARREL O-RING	1	RUBBER	D-2000 BUNA N
11	UPPER STEM	1	CARBON STEEL	A-576 GR 1144T
12	STEM O-RING	1	RUBBER	D-2000 BUNA N
13				
14	STORZ PUMPER NOZZLE	1	MANG.BRONZE	B-584 C86300
15	STORZ CAP CABLE	1		
16	PUMPER NOZZLE O-RING	1	RUBBER	D-2000 BUNA N
17	PUMPER NOZZLE CAP	1	ALUMINUM	
18	HOSE NOZZLE	2	BRONZE	B-584 ALLOY C89833
19	HOSE NOZZLE CAP GASKET	2	RUBBER	D-2000 NEOPRENE
20	HOSE NOZZLE O-RING	2	RUBBER	D-2000 BUNA N
21	HOSE NOZZLE CAP	2	CAST IRON	A-126 CLASS B

ITEM	DESCRIPTION	REQ'D	MATERIAL	A.S.T.M.
22	CAP CHAIN	3	STEEL	ELECTRO GALV.
23	CHAIN HOOK	1	STEEL	ELECTRO GALV.
24	UPPER BARREL	1	CAST IRON	A-126 CLASS B
25	SAFETY STEM COUPLING	1	STAINLESS STEEL	A-890 1.5% SILICON MAX.
26	SAFETY FLANGE BOLT	8	STEEL	A-307 ELECTROGALV. GR. B
27	BOTTOM UPPER BARREL O-RING	1	RUBBER	D-2000 BUNA N
28	SAFETY FLANGE	1	CAST IRON	A-126 CLASS B
29	COTTER PIN	2	STAINLESS STEEL	A-276 302
30	CLEVIS PIN	2	STAINLESS STEEL	A-276 305
31	LOWER STEM	1	CARBON STEEL	A-576 GRADE 1144T
32	LOWER BARREL	1	CAST IRON	A-126 CLASS B
33	STEM PIN	1	STAINLESS STEEL	A-276 302
34	DRAIN VALVE FACING	2	H.D. POLYETHYLENE	LS 5660-00
35	DRAIN VALVE FACING SCREW	4	STAINLESS STEEL	A-276 302
36	UPPER VALVE PLATE	1	BRONZE	B-584 ALLOY C89833
37	BOTTOM SEAT O-RING	1	RUBBER	D-2000 BUNA N
38	DRAIN RING	1	BRONZE	B-584 ALLOY C83600
39	SEAT RING	1	BRONZE	B-584 ALLOY C89833
40	DRAIN RING HOUSING	1	CAST IRON	A-126 CLASS B
41	MAIN VALVE	1	RUBBER	D-2000 NATURAL
42	LOWER VALVE PLATE	1	CAST IRON	A-126 CLASS B
43	LOCK WASHER	1	STAINLESS STEEL	A-276 302

ITEM	DESCRIPTION	REQ'D	MATERIAL	A.S.T.M.
44	VALVE NUT	1	CAST IRON	A-126 CLASS B
45	VALVE NUT SEAL	1	RUBBER	NITRILE
46	HEX NUT	8	STEEL	ELECTRO. GALV.
47	STEM O-RING	2	RUBBER	D-2000 BUNA N
48	SAFETY FLANGE NUT	8	STEEL	ELECTRO. GALV.
49	DRAIN RING HOUSING O-RING	1	RUBBER	D-2000 BUNA N
50	SLEEVE	1	COPPER	B-75 ALLOY 122
51	UPPER STEM PIN	1	STAINLESS STEEL	A-276 302
52	HEX BOLT	6	STEEL	A-307 ELECTROGALV. GR. B
53	HEX NUT	6	STEEL	A-307 ELECTROGALV. GR. B
54	SHOE	1	DUCTILE IRON	A536 GRADE 65-45-12
55	GASKET	1	RUBBER	EPDM
56	INTERMEDIATE RING	1	DUCTILE IRON	A536 GRADE 65-45-12
57	GRIP RING	1	DUCTILE IRON	A536 GRADE 65-45-12
58	END RING	1	DUCTILE IRON	A536 GRADE 65-45-12
59	T-HEAD BOLT	4	STEEL	A242 TYPE 1
60	BREAK AWAY NUT	4	STEEL	A108 ZINC OR MANGANESE PHOSPHATE
61	BREAK AWAY NUT WASHER	4	NYLON	
62				

SEE CAT. RECORD FOR RESPECTIVE PARTS OR SUB. ASS'YS

NOTE: SIZE AND STYLE OF OPERATING NUT, SHOE SIZE, AND THREADING OF NOZZLES IS PER CUSTOMER SPECS.



4 1/2" A421 & 5 1/4" A423 SUPER CENTURION "250" W/ TWO HOSE NOZZLES & ONE PUMPER NOZZLE - 250 P.S.I. W.P.- 500 P.S.I. TEST, 1997 STYLE. WITH AquaGrip ASSEMBLY

DWG. FH 106

REV.	DESCRIPTION	REF.	DATE
D	REVISE ITEMS 1, 4, 18, 36, 38, & 39	JMG	11-8-13
C	REVISE MATERIAL ON ITEM #14	ANC	1-21-13
B	REVISE MATL ON ITEMS #11 & 31	MRG	2-24-12
A	REVISE ITEMS # 11 & 31	ANC	11-20-08

(MILLIMETER) INCH INITIAL RELEASE DWG'N JEH 11-5-01 CHK'N APP JMG 11-5-01 E.O. NUMBER	TOLERANCES - MACHINING UNLESS OTHERWISE NOTED BREAK EDGES MACH. .006/.016 FINISH SURFACES 125 FRACTIONS $\pm 1/64$ DECIMALS 2 PL. $\pm .025$ 3 PL. $\pm .005$ ANGLES $\pm 1'$	THIRD ANGLE PROJECTION PURCH. FINISH REF. NO. N.T.S. STK. NO.
MAT'L SEE TABLE (Mueller Co.) DESC. 4 1/2" A421 & 5 1/4" A423 SUPER CENTURION W/ AquaGrip and STORZ NOZZLE	REVISION D	NUMBER FH 106 SHEET 1 OF 1