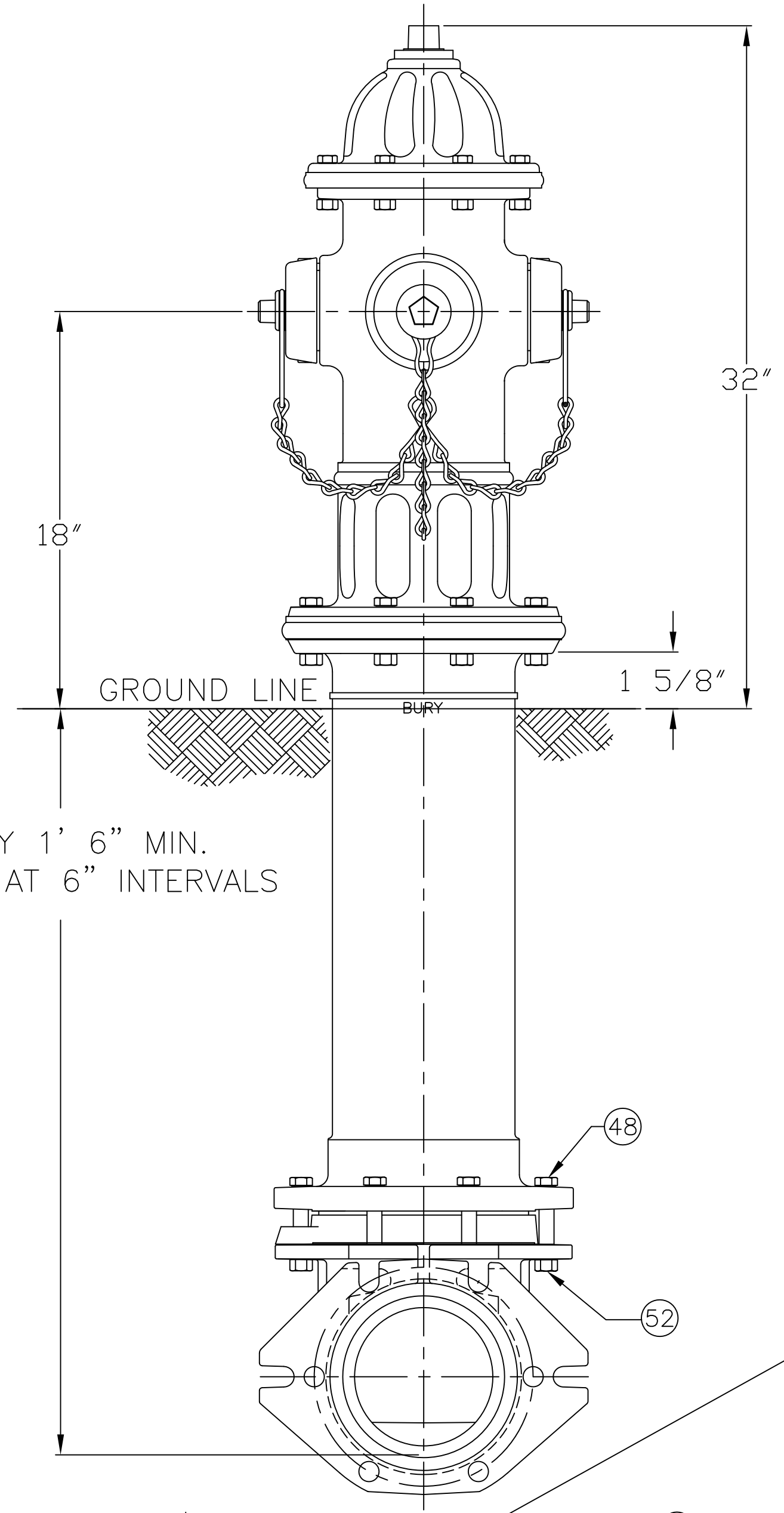


5 1/4" A454 SUPER CENTURION "250" W/ THREE HOSE NOZZLES
250 P.S.I. W.P. - 500 P.S.I. TEST, 1997 STYLE.

DWG. FH 448



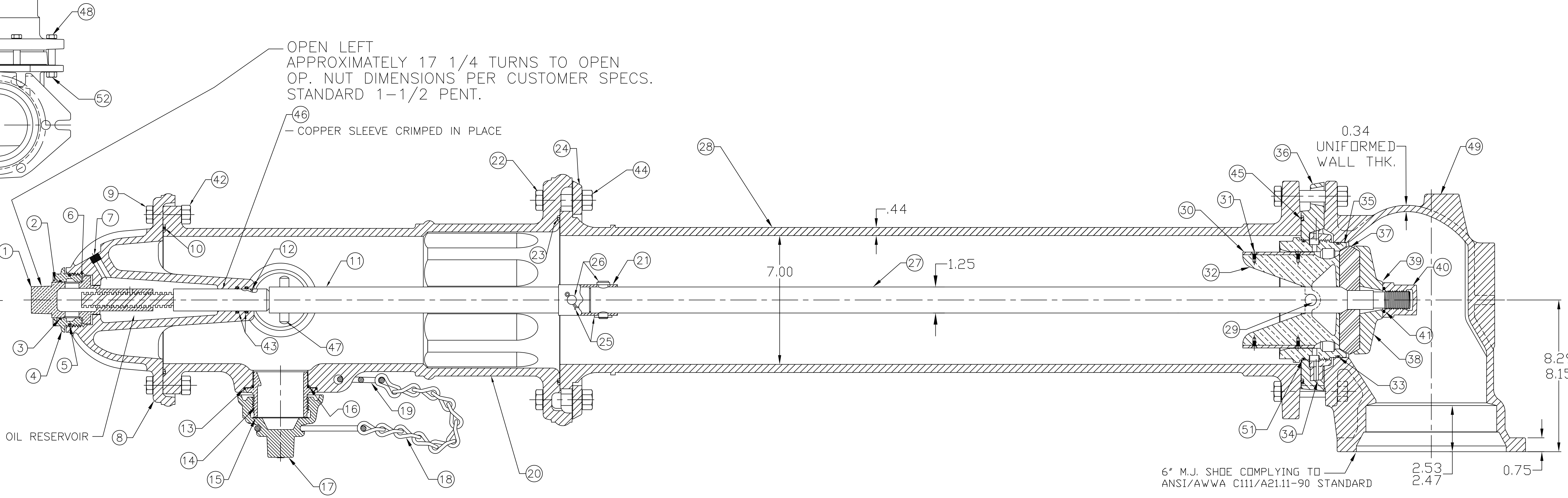
PARTS LIST				
ITEM	DESCRIPTION	REQ'D	MATERIAL	A.S.T.M.
1	OPERATING NUT	1	BRONZE	B-584 C83600
2	WIPER RING	1	RUBBER	D-2000 EPDM
3	HOLD DOWN NUT O-RING	1	RUBBER	D-2000 BUNA N
4	HOLD DOWN NUT	1	BRONZE	B-584 C83600
5	BONNET O-RING	1	RUBBER	D-2000 BUNA N
6	ANTI-FRICTION WASHER	1	CELCON	GRADE M90-04
7	OIL FILLER PLUG	1	BRASS	B-16 ALLOY 360
8	BONNET	1	CAST IRON	A-126 CLASS B
9	HEX BOLT 1/2x2.250 LG	8	STEEL	A-307 ELECTROGALV. GR. B
10	TOP UPPER BARREL O-RING	1	RUBBER	D-2000 BUNA N
11	UPPER STEM	1	CARBON STEEL	A-576 GR 1144T
12	STEM O-RING	1	RUBBER	D-2000 BUNA N
13	NOZZLE LOCK	3	STAINLESS STEEL	A-276 305 OR 410
14	HOSE NOZZLE	3	BISMUTH BRASS	B-584 C89833
15	HOSE NOZZLE CAP GASKET	3	RUBBER	D-2000 NEOPRENE
16	HOSE NOZZLE O-RING	3	RUBBER	D-2000 BUNA N
17	HOSE NOZZLE CAP	3	CAST IRON	A-126 CLASS B
18	CAP CHAIN	3	STEEL	ELECTRO GALV.
19	CHAIN HOOK	2	STEEL	ELECTRO GALV.
20	UPPER BARREL	1	CAST IRON	A-126 CLASS B
21	SAFETY STEM COUPLING	1	STAINLESS STEEL	A-890 1.5% SILICON MAX.

ITEM	DESCRIPTION	REQ'D	MATERIAL	A.S.T.M.
22	SAFETY FLANGE BOLT 5/8x3.00	8	STEEL	A-307 ELECTROGALV. GR. B
23	BOTTOM UPPER BARREL O-RING	1	RUBBER	D-2000 BUNA N
24	SAFETY FLANGE	1	CAST IRON	A-126 CLASS B
25	COTTER PIN	2	STAINLESS STEEL	A-276 302
26	CLEVIS PIN	2	STAINLESS STEEL	A-276 305
27	LOWER STEM	1	CARBON STEEL	A-576 GRADE 1144T
28	LOWER BARREL	1	CAST IRON	A-126 CLASS B
29	STEM PIN	1	STAINLESS STEEL	A-276 302
30	DRAIN VALVE FACING	2	H.D. POLYETHYLENE	LS 5660-00
31	DRAIN VALVE FACING SCREW	4	STAINLESS STEEL	A-276 302
32	UPPER VALVE PLATE	1	BISMUTH BRASS	B-584 C89833
33	BOTTOM SEAT O-RING	1	RUBBER	D-2000 BUNA N
34	DRAIN RING	1	BRONZE	B-584 C83600
35	SEAT RING	1	BISMUTH BRASS	B-584 C89833
36	DRAIN RING HOUSING	1	CAST IRON	A-126 CLASS B
37	MAIN VALVE	1	RUBBER	D-2000 NATURAL
38	LOWER VALVE PLATE	1	CAST IRON	A-126 CLASS B
39	LOCK WASHER	1	STAINLESS STEEL	A-276 302
40	VALVE NUT	1	CAST IRON	A-126 CLASS B
41	VALVE NUT SEAL	1	RUBBER	NITRILE
42	HEX NUT 1/2"	8	STEEL	ELECTRO. GALV.
43	STEM O-RING	2	RUBBER	D-2000 BUNA N

ITEM	DESCRIPTION	REQ'D	MATERIAL	A.S.T.M.
44	SAFETY FLANGE NUT 5/8"	8	STEEL	A-307 ELECTRO. GALV.
45	DRAIN RING HOUSING O-RING	1	RUBBER	D-2000 BUNA N
46	SLEEVE	1	COPPER	B-75 ALLOY 122
47	UPPER STEM PIN	1	STAINLESS STEEL	A-276 302
48	HEX BOLT 3/4x4.00	6	STEEL	A-307 ELECTROGALV. GR. B
49	SHOE	1	DUCTILE IRON	A536 65-45-12
* 50	PIPE GLAND	1	CAST IRON	A-126 CLASS B
51	TOP SEAT O-RING	1	RUBBER	D-2000 BUNA N
52	HEX NUT 3/4	6	STEEL	A-307 ELECTROGALV. GR. B
* 53	MECH. JOINT GASKET	1	RUBBER	D-2000 NATURAL
* 54	T-HEAD BOLT 3/4x3.50	6	STEEL	A-242 TYPE 1
* 55	HEX NUT 3/4"	6	STEEL	A-242 TYPE 1

SEE CAT. RECORD FOR RESPECTIVE PARTS OR SUB. ASS'YS
NOTE: SIZE AND STYLE OF OPERATING NUT, SHOE SIZE, AND THREADING OF NOZZLES IS PER CUSTOMER SPECS.

* NOT SHOWN



6" M.J. SHOE COMPLYING TO ANSI/AWWA C111/A21.11-90 STANDARD

REV.	DESCRIPTION	REF.	DRFTR	CHKR	APP	DATE
B	REVISE PREFIX FROM A423 TO A454		ANC			4-1-15
A	REVISE MATERIAL ON ITEMS# 14,32,35		ANC			11-4-13

(MILLIMETER) INCH INITIAL RELEASE DRFTR ANC 5-7-13 CHK'R APP E.O. NUMBER	TOLERANCES - MACHINING UNLESS OTHERWISE NOTED BREAK EDGES MACH. .006/.016 FINISH SURFACES 125 FRACTIONS ±1/64 DECIMALS 2 PL ±.025 3 PL ±.010 ANGLES ±1°	THIRD ANGLE PROJECTION PURCH. FINISH REF. NO. SCALE N.T.S. STK. NO.
MAT'L SEE TABLE DESC. 5 1/4" A454 SUPER CENTURION "250" W/ THREE HOSE NOZZLES		REVISION B NUMBER FH 448 SHEET 1 OF 1