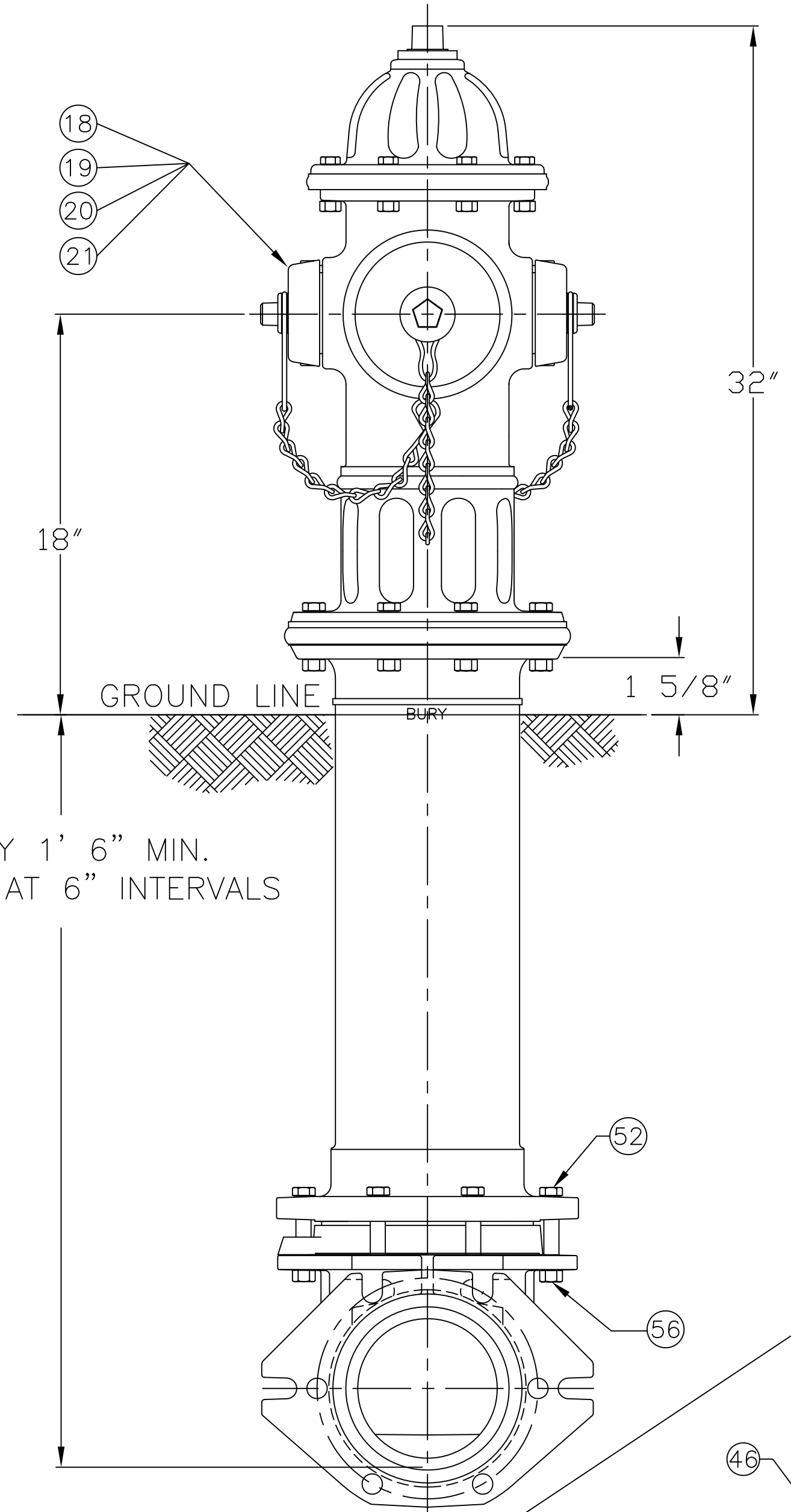


5 1/4" A423 SUPER CENTURION "250" W/ TWO HOSE NOZZLES
& TWO PUMPER NOZZLES - 250 P.S.I. W.P. - 500 P.S.I. TEST, 1997 STYLE.

DWG. FH 449



BURY 1' 6" MIN.
LONGER AT 6" INTERVALS

| PARTS LIST | | | | |
|------------|--------------------------|-------|-----------------|------------------|
| ITEM | DESCRIPTION | REQ'D | MATERIAL | A.S.T.M. |
| 1 | OPERATING NUT | 1 | BRONZE | B-584 C83600 |
| 2 | WIPER RING | 1 | RUBBER | D-2000 EPDM |
| 3 | HOLD DOWN NUT O-RING | 1 | RUBBER | D-2000 BUNA N |
| 4 | HOLD DOWN NUT | 1 | BRONZE | B-584 C83600 |
| 5 | BONNET O-RING | 1 | RUBBER | D-2000 BUNA N |
| 6 | ANTI-FRICTION WASHER | 1 | CELCON | GRADE M90-04 |
| 7 | OIL FILLER PLUG | 1 | BRASS | B-16 ALLOY 360 |
| 8 | BONNET | 1 | CAST IRON | A-126 CLASS B |
| 9 | HEX BOLT 1/2x2.250 LG | 8 | STEEL | J429 GRADE 2 |
| 10 | TOP UPPER BARREL O-RING | 1 | RUBBER | D-2000 BUNA N |
| 11 | UPPER STEM | 1 | CARBON STEEL | A-576 GR 1144T |
| 12 | STEM O-RING | 1 | RUBBER | D-2000 BUNA N |
| 13 | NOZZLE LOCK | 4 | STAINLESS STEEL | A-276 305 OR 410 |
| 14 | PUMPER NOZZLE | 2 | BISMUTH BRASS | B-584 C89833 |
| 15 | PUMPER NOZZLE CAP GASKET | 2 | RUBBER | D-2000 NEOPRENE |
| 16 | PUMPER NOZZLE O-RING | 2 | RUBBER | D-2000 BUNA N |
| 17 | PUMPER NOZZLE CAP | 2 | CAST IRON | A-126 CLASS B |
| 18 | HOSE NOZZLE | 2 | BISMUTH BRASS | B-584 C89833 |
| 19 | HOSE NOZZLE CAP GASKET | 2 | RUBBER | D-2000 NEOPRENE |
| 20 | HOSE NOZZLE O-RING | 2 | RUBBER | D-2000 BUNA N |
| 21 | HOSE NOZZLE CAP | 2 | CAST IRON | A-126 CLASS B |

| ITEM | DESCRIPTION | REQ'D | MATERIAL | A.S.T.M. |
|------|-----------------------------|-------|-------------------|-------------------------|
| 22 | CAP CHAIN | 4 | STEEL | ELECTRO GALV. |
| 23 | CHAIN HOOK | 2 | STEEL | ELECTRO GALV. |
| 24 | UPPER BARREL | 1 | CAST IRON | A-126 CLASS B |
| 25 | SAFETY STEM COUPLING | 1 | STAINLESS STEEL | A-890 1.5% SILICON MAX. |
| 26 | SAFETY FLANGE BOLT 5/8x3.00 | 8 | STEEL | J429 GRADE 2 |
| 27 | BOTTOM UPPER BARREL O-RING | 1 | RUBBER | D-2000 BUNA N |
| 28 | SAFETY FLANGE | 1 | CAST IRON | A-126 CLASS B |
| 29 | COTTER PIN | 2 | STAINLESS STEEL | A-276 302 |
| 30 | CLEVIS PIN | 2 | STAINLESS STEEL | A-276 305 |
| 31 | LOWER STEM | 1 | CARBON STEEL | A-576 GRADE 1144T |
| 32 | LOWER BARREL | 1 | CAST IRON | A-126 CLASS B |
| 33 | STEM PIN | 1 | STAINLESS STEEL | A-276 302 |
| 34 | DRAIN VALVE FACING | 2 | H.D. POLYETHYLENE | LS 5660-00 |
| 35 | DRAIN VALVE FACING SCREW | 4 | STAINLESS STEEL | A-276 302 |
| 36 | UPPER VALVE PLATE | 1 | BISMUTH BRASS | B-584 C89833 |
| 37 | BOTTOM SEAT O-RING | 1 | RUBBER | D-2000 BUNA N |
| 38 | DRAIN RING | 1 | BRONZE | B-584 ALLOY 844 |
| 39 | SEAT RING | 1 | BISMUTH BRASS | B-584 C89833 |
| 40 | DRAIN RING HOUSING | 1 | CAST IRON | A-126 CLASS B |
| 41 | MAIN VALVE | 1 | RUBBER | D-2000 NATURAL |
| 42 | LOWER VALVE PLATE | 1 | CAST IRON | A-126 CLASS B |
| 43 | LOCK WASHER | 1 | STAINLESS STEEL | A-276 302 |

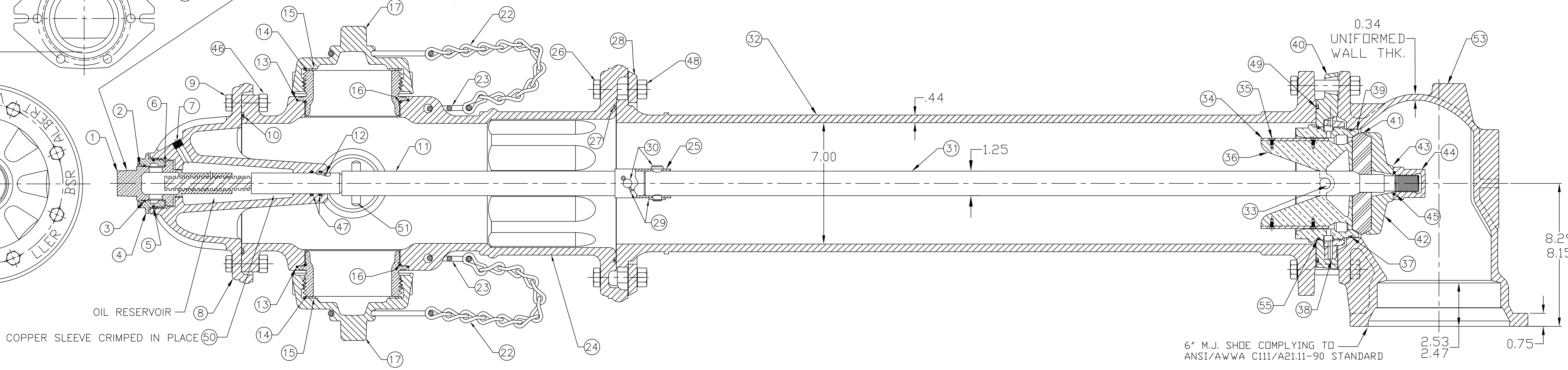
| ITEM | DESCRIPTION | REQ'D | MATERIAL | A.S.T.M. |
|------|---------------------------|-------|-----------------|----------------|
| 44 | VALVE NUT | 1 | CAST IRON | A-126 CLASS B |
| 45 | VALVE NUT SEAL | 1 | RUBBER | NITRILE |
| 46 | HEX NUT 1/2" | 8 | STEEL | A563 GRADE B |
| 47 | STEM O-RING | 2 | RUBBER | D-2000 BUNA N |
| 48 | SAFETY FLANGE NUT 5/8" | 8 | STEEL | A563 GRADE B |
| 49 | DRAIN RING HOUSING O-RING | 1 | RUBBER | D-2000 BUNA N |
| 50 | SLEEVE | 1 | COPPER | B-75 ALLOY 122 |
| 51 | UPPER STEM PIN | 1 | STAINLESS STEEL | A-276 302 |
| 52 | HEX BOLT 3/4x4.00 | 6 | STEEL | J429 GRADE 2 |
| 53 | SHOE | 1 | DUCTILE IRON | A536 65-45-12 |
| * 54 | PIPE GLAND | 1 | CAST IRON | A-126 CLASS B |
| 55 | TOP SEAT O-RING | 1 | RUBBER | D-2000 BUNA N |
| 56 | HEX NUT 3/4 | 1 | STEEL | A563 GRADE B |
| * 57 | MECH. JOINT GASKET | 1 | RUBBER | D-2000 NATURAL |
| * 58 | T-HEAD BOLT 3/4x3.50 | 6 | STEEL | A-242 TYPE 1 |
| * 59 | HEX NUT 3/4" | 6 | STEEL | A-242 TYPE 1 |

SEE CAT. RECORD FOR RESPECTIVE PARTS OR SUB. ASS'YS

* NOT SHOWN

NOTE: SIZE AND STYLE OF OPERATING NUT, SHOE SIZE, AND THREADING OF NOZZLES IS PER CUSTOMER SPECS.

OPEN LEFT APPROXIMATELY 17 1/4 TURNS TO OPEN OP. NUT DIMENSIONS PER CUSTOMER SPECS. STANDARD 1-1/2 PENT.



| | | |
|------------------|---|------------------------|
| APR (MILLIMETER) | TOLERANCES - MACHINING | THIRD ANGLE PROJECTION |
| INCH | UNLESS OTHERWISE NOTED | |
| INITIAL RELEASE | BREAK EDGES | PURCH. FINISH |
| DRFTR ANC 5-7-13 | MACH. .006/.016 | REF. NO. SCALE |
| CHK'R | 125 | N.T.S. |
| APP | FRACTIONS ±1/64 | STK. NO. |
| E.O. NUMBER | DECIMALS 2 PL ±.025 3 PL ±.010 | |
| | ANGLES ±1° | |
| | MAT'L SEE TABLE | |
| | DESCR. 5 1/4" A423 SUPER CENTURION "250" W/ TWO HOSE NOZZLES & TWO PUMPER NOZZLES, 1997 STYLE | REVISION NUMBER |
| | | A FH 449 |
| | | SHEET 1 OF 1 |

| | | | | |
|------|---------------------------------------|------|-------|---------|
| A | REVISE MATERIAL ON ITEMS# 14,18,36,39 | ANC | | 11-4-13 |
| REV. | DESCRIPTION | REF. | DRFTR | DATE |