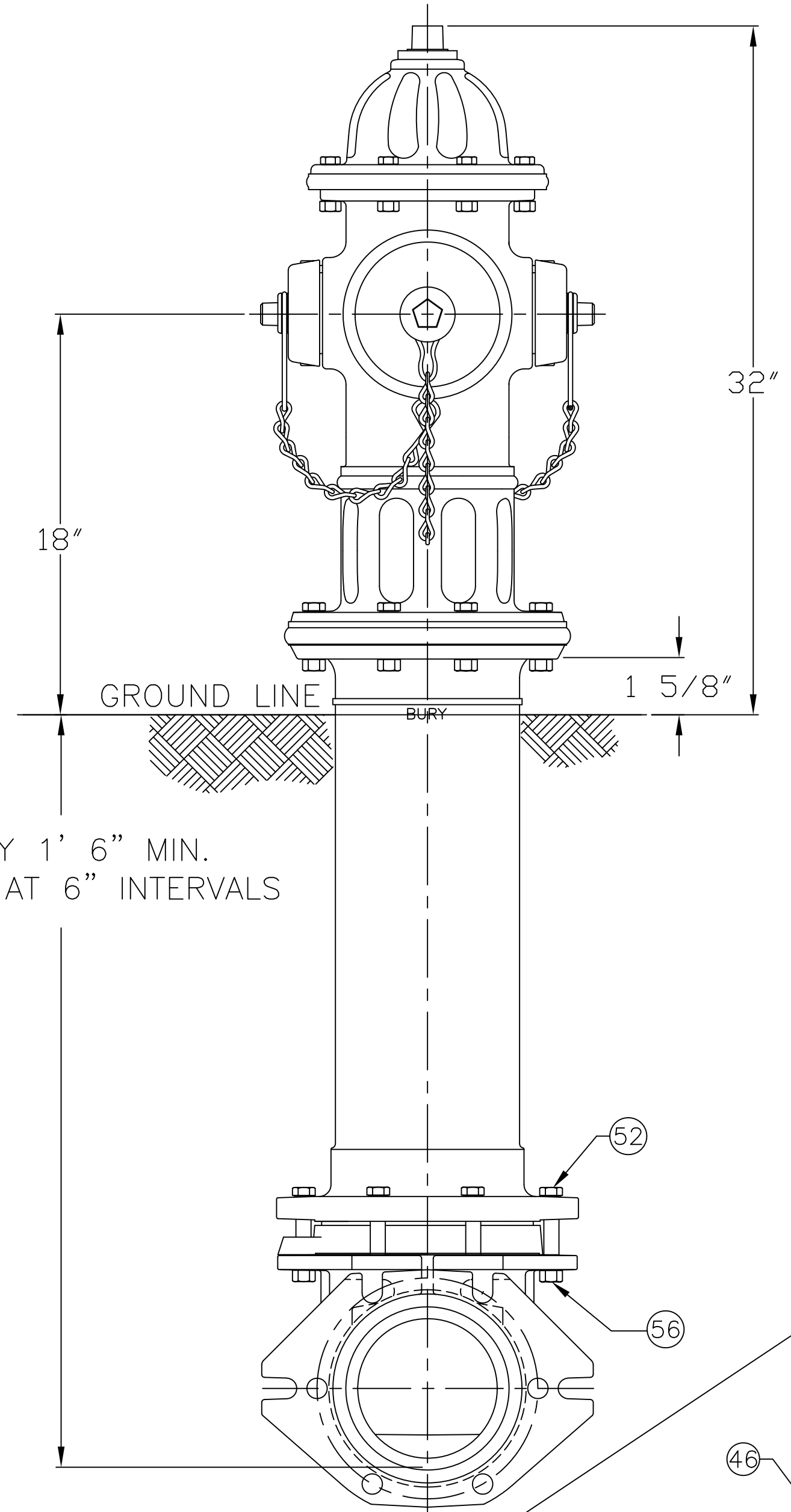


5 1/4" A458 SUPER CENTURION "250" W/ THREE HOSE NOZZLES
& ONE PUMPER NOZZLES - 250 P.S.I. W.P. - 500 P.S.I. TEST, 1997 STYLE.

DWG. FH 450

B	UPDATE MATERIALS	ANC	2-16-16
A	REVISE MATERIAL ON ITEMS# 14,18,36,39	ANC	11-4-13
REV.	DESCRIPTION	REF.	DATE



PARTS LIST				
ITEM	DESCRIPTION	REQ'D	MATERIAL	A.S.T.M.
1	OPERATING NUT	1	BRASS	B62 C83600
2	WIPER RING	1	RUBBER	D-2000 EPDM
3	HOLD DOWN NUT O-RING	1	RUBBER	D-2000 BUNA N
4	HOLD DOWN NUT	1	BRASS	B62 C83600
5	BONNET O-RING	1	RUBBER	D-2000 BUNA N
6	ANTI-FRICTION WASHER	1	CELCON	GRADE M90-04
7	OIL FILLER PLUG	1	BRASS	B-16 ALLOY 360
8	BONNET	1	CAST IRON	A-126 CLASS B
9	HEX BOLT 1/2x2.250 LG	8	STEEL	J429 GRADE 2
10	TOP UPPER BARREL O-RING	1	RUBBER	D-2000 BUNA N
11	UPPER STEM	1	CARBON STEEL	A-576 GR 1144T
12	STEM O-RING	1	RUBBER	D-2000 BUNA N
13	NOZZLE LOCK	4	STAINLESS STEEL	A-276 305 OR 410
14	PUMPER NOZZLE	2	BISMUTH BRASS	B-584 C89833
15	PUMPER NOZZLE CAP GASKET	2	RUBBER	D-2000 NEOPRENE
16	PUMPER NOZZLE O-RING	2	RUBBER	D-2000 BUNA N
17	PUMPER NOZZLE CAP	2	CAST IRON	A-126 CLASS B
18	HOSE NOZZLE	2	BISMUTH BRASS	B-584 C89833
19	HOSE NOZZLE CAP GASKET	2	RUBBER	D-2000 NEOPRENE
20	HOSE NOZZLE O-RING	2	RUBBER	D-2000 BUNA N
21	HOSE NOZZLE CAP	2	CAST IRON	A-126 CLASS B

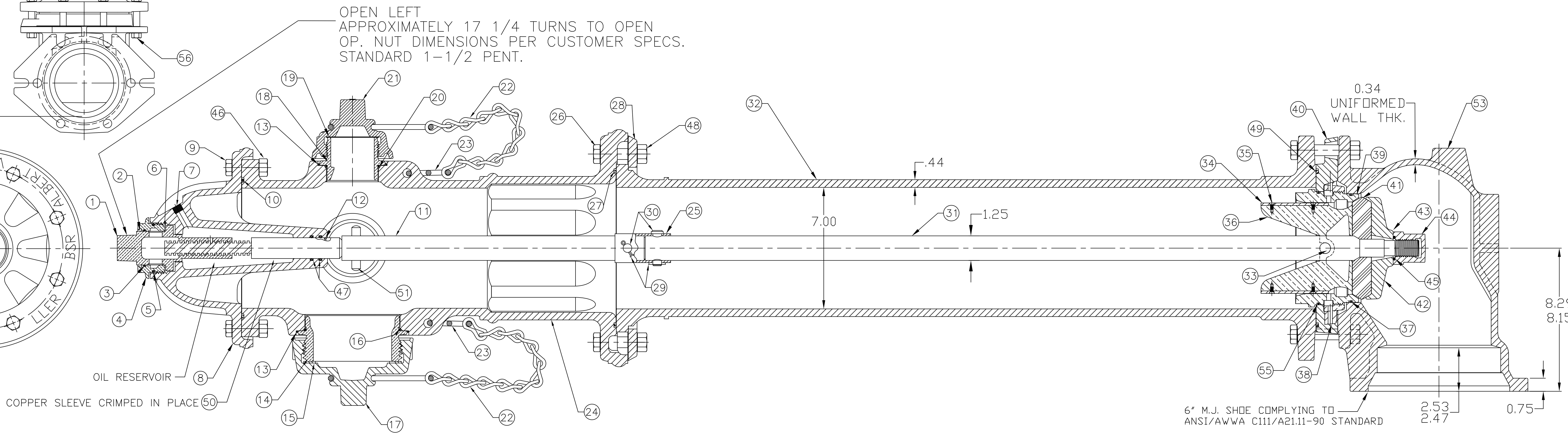
ITEM	DESCRIPTION	REQ'D	MATERIAL	A.S.T.M.
22	CAP CHAIN	4	STEEL	ELECTRO GALV.
23	CHAIN HOOK	2	STEEL	ELECTRO GALV.
24	UPPER BARREL	1	CAST IRON	A-126 CLASS B
25	SAFETY STEM COUPLING	1	STAINLESS STEEL	A-890 1.5% SILICON MAX.
26	SAFETY FLANGE BOLT 5/8x3.00	8	STEEL	J429 GRADE 2
27	BOTTOM UPPER BARREL O-RING	1	RUBBER	D-2000 BUNA N
28	SAFETY FLANGE	1	CAST IRON	A-126 CLASS B
29	COTTER PIN	2	STAINLESS STEEL	A-276 302
30	CLEVIS PIN	2	STAINLESS STEEL	A-276 305
31	LOWER STEM	1	CARBON STEEL	A-576 GRADE 1144T
32	LOWER BARREL	1	CAST IRON	A-126 CLASS B
33	STEM PIN	1	STAINLESS STEEL	A-276 302
34	DRAIN VALVE FACING	2	H.D. POLYETHYLENE	LS 5660-00
35	DRAIN VALVE FACING SCREW	4	STAINLESS STEEL	A-276 302
36	UPPER VALVE PLATE	1	BISMUTH BRASS	B-584 C89833
37	BOTTOM SEAT O-RING	1	RUBBER	D-2000 BUNA N
38	DRAIN RING	1	BRONZE	B62 C83600
39	SEAT RING	1	BISMUTH BRASS	B-584 C89833
40	DRAIN RING HOUSING	1	CAST IRON	A-126 CLASS B
41	MAIN VALVE	1	RUBBER	D-2000 NATURAL
42	LOWER VALVE PLATE	1	CAST IRON	A-126 CLASS B
43	LOCK WASHER	1	STAINLESS STEEL	A-276 302

ITEM	DESCRIPTION	REQ'D	MATERIAL	A.S.T.M.	CLASS B
44	VALVE NUT	1	CAST IRON	A-126	CLASS B
45	VALVE NUT SEAL	1	RUBBER		NITRILE
46	HEX NUT 1/2"	8	STEEL	A563	GRADE B
47	STEM O-RING	2	RUBBER	D-2000	BUNA N
48	SAFETY FLANGE NUT 5/8"	8	STEEL	A563	GRADE B
49	DRAIN RING HOUSING O-RING	1	RUBBER	D-2000	BUNA N
50	SLEEVE	1	COPPER	B-75	ALLOY 122
51	UPPER STEM PIN	1	STAINLESS STEEL	A-276	302
52	HEX BOLT 3/4x4.00	6	STEEL	J429	GRADE 2
53	SHOE	1	DUCTILE IRON	A536	65-45-12
* 54	PIPE GLAND	1	CAST IRON	A-126	CLASS B
55	TOP SEAT O-RING	1	RUBBER	D-2000	BUNA N
56	HEX NUT 3/4	1	STEEL	A563	GRADE B
* 57	MECH. JOINT GASKET	1	RUBBER	D-2000	NATURAL
* 58	T-HEAD BOLT 3/4x3.50	6	STEEL	A-242	TYPE 1
* 59	HEX NUT 3/4"	6	STEEL	A-242	TYPE 1

SEE CAT. RECORD FOR RESPECTIVE PARTS OR SUB. ASS'YS

* NOT SHOWN

NOTE: SIZE AND STYLE OF OPERATING NUT, SHOE SIZE, AND THREADING OF NOZZLES IS PER CUSTOMER SPECS.



(MILLIMETER) INCH INITIAL RELEASE DRFT'R ANC 5-7-13 CHK'R APP E.O. NUMBER	TOLERANCES - MACHINING UNLESS OTHERWISE NOTED BREAK EDGES FINISH SURFACES MACH. .006/.016 125 FRACTIONS DECIMALS ANGLES ±1/64 2 PL ±.025 3 PL ±.010 ±1°	THIRD ANGLE PROJECTION PURCH. FINISH REF. NO. SCALE N.T.S. STK. NO.
MAT'L SEE TABLE DESC. 5 1/4" A458 SUPER CENTURION "250" W/ THREE HOSE NOZZLES & ONE PUMPER NOZZLES 1997 STYLE.		REVISION B NUMBER FH 450 SHEET 1 OF 1

UL