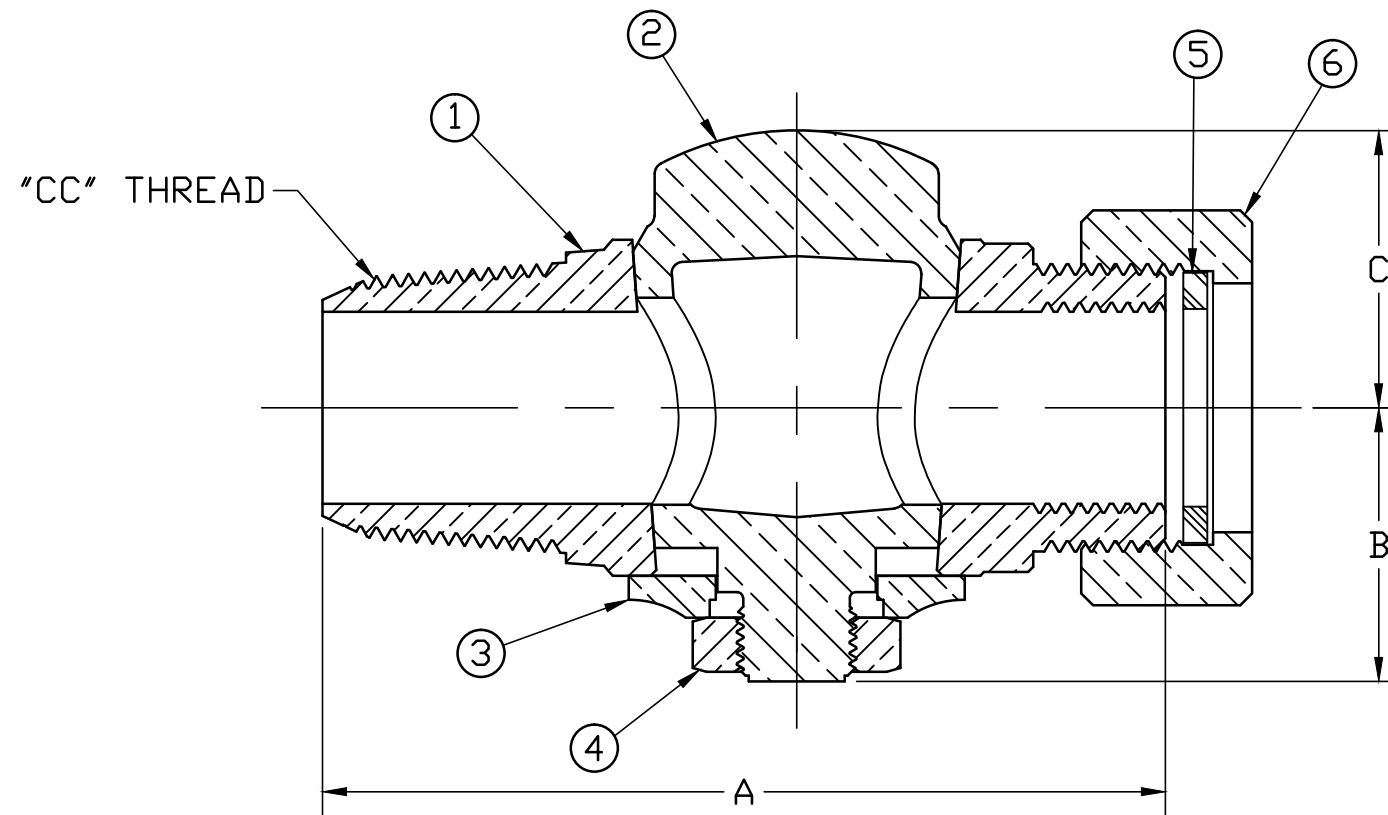


No.	DESCRIPTION	MATERIAL DESCRIPTION
1	BODY	CAST LOW LEAD BRASS ALLOY
2	KEY	CAST LOW LEAD BRASS ALLOY
3	KEY WASHER	CAST BRASS ASTM B62 ALLOY C83600
4	KEY NUT	CAST BRASS ASTM B62 ALLOY C83600
5	GASKET	VEGETABLE TANNED LEATHER
6	COUP NUT	CAST BRASS ASTM B62 ALLOY C83600



VALVE SIZE	DIM "A"	DIM "B"	DIM "C"
1"	4.39	1.43	1.44

NOTE: ALL WETTED PARTS ARE LOW LEAD BRASS ALLOY

FILEPATH: PROD-ENG\MUELLER\ASYSUBMITTALS\H1000121N

						DRFTR	RWB	8/5/14	Mueller Co.		
						CHKR					
						ENGR					
						MGR					
									UNLESS OTHERWISE NOTED	THIRD ANGLE PROJECTION	
									SURFACE PREPARATION:		
									BREAK CORNER(S) ---- .000		
									SURFACE FINISH -- XX RMS	REF. No.	SCALE
									TOLERANCE(S):		FULL
									LINEAR ----- ± .000		
									ANGULAR ----- ± 0°00'		
									STK No:		
									MAT'L:		
									DESCR.	LLB CORPORATION STOP VALVE	
										("CC" x "MIP" w/ SCREW PLUG THRD)	
										DWG NUMBER	
										H10001-99021N	

TITLE TO AND OWNERSHIP OF THIS ENGINEERING DATA REMAINS IN Mueller Co. NO USE IS TO BE MADE OF THIS DATA EXCEPT AS SPECIFICALLY AUTHORIZED BY Mueller Co. ASSENT ON THE PART OF THE RECIPIENT TO THESE CONDITIONS IS PRESUMED

REV ECR DESCRIPTION DATE BY CHKR
PER EST NO: DXXXX EST FIN WT = 0.0000 lbs

DWG NUMBER
H10001-99021N

44² - MRKTG