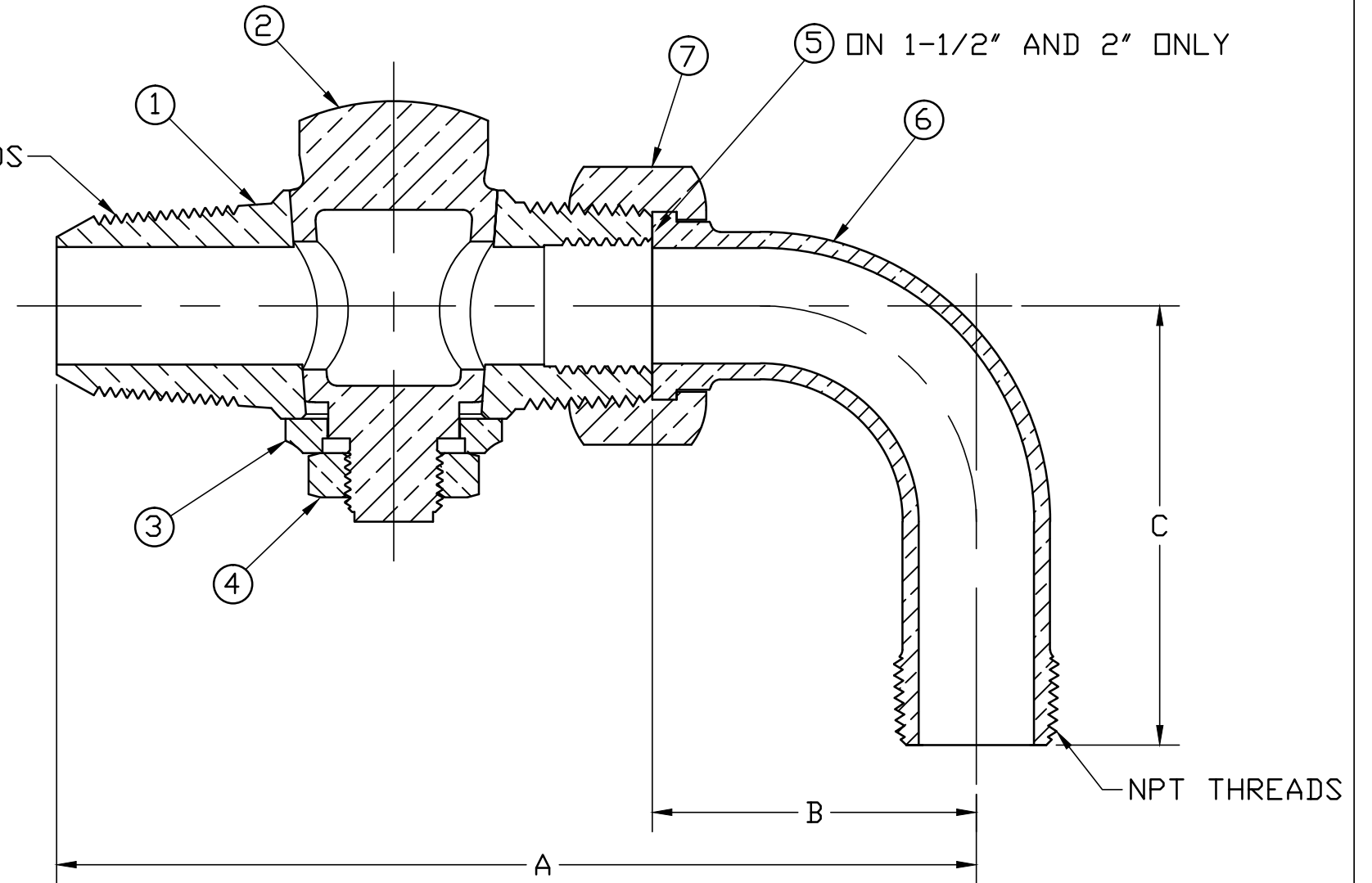


No.	DESCRIPTION	REQ'D	MATERIAL DESCRIPTION
1	BODY	1	CAST LOW LEAD BRASS ALLOY
2	KEY	1	CAST LOW LEAD BRASS ALLOY
3	KEY WASHER	1	BRONZE 413 PRESSED METAL
4	KEY NUT	1	CAST BRASS ASTM B62 ALLOY C83600
5	FIBER GASKET	1	ASTM D710 (VULCANIZED FIBER)
6	TAILPIECE	1	CAST LOW LEAD BRASS ALLOY
7	COUPLING NUT	1	CAST BRASS ASTM B62 ALLOY C83600

NOTE: ALL WETTED PART ARE LOW LEAD BRASS ALLOY

MUELLER CC THREADS

VALVE SIZE	DIM "A"	DIM "B"	DIM "C"
3/4"	5.85	2.06	2.80
1"	6.78	2.39	2.56
1-1/2"	8.94	2.84	3.81
2"	10.42	3.23	4.33



FILEPATH: PROD-ENG\MUELLER\ASYSUBMITTALS\H1000302N

DRFTR	RWB	5/8/12	Mueller Co.		
CHKR					
ENGR					
MGR					
			UNLESS OTHERWISE NOTED	THIRD ANGLE PROJECTION	
			SURFACE PREPARATION:		
			BREAK CORNER(S) ---- .000		
			SURFACE FINISH -- XX RMS	REF. No.	
			TOLERANCE(S):	SCALE	
			LINEAR ----- ± .000	FULL	
			ANGULAR ----- ± 0°00'		
			STK No:		
			MAT'L:		
			DESCR.	DWG NUMBER	
			LLB CORPORATION STOP W/ QUARTER BEND	H1000302N	
REV	ECR	DESCRIPTION	DATE	BY	CHKR
PER EST NO: DXXXX EST FIN WT = 0.0000 lbs					

DWG NUMBER
H1000302N

MRKTG

TITLE TO AND OWNERSHIP OF THIS ENGINEERING DATA REMAINS IN Mueller Co. NO USE IS TO BE MADE OF THIS DATA EXCEPT AS SPECIFICALLY AUTHORIZED BY Mueller Co. ASSENT ON THE PART OF THE RECIPIENT TO THESE CONDITIONS IS PRESUMED.