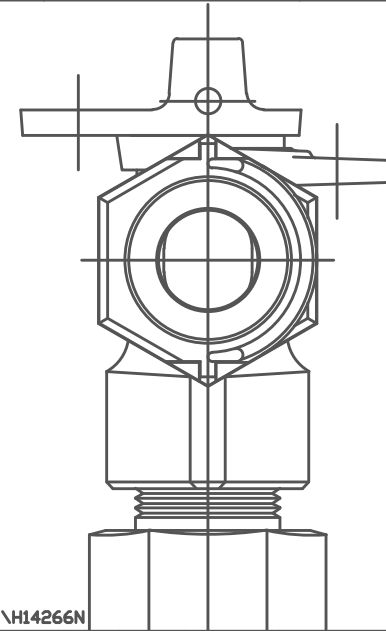
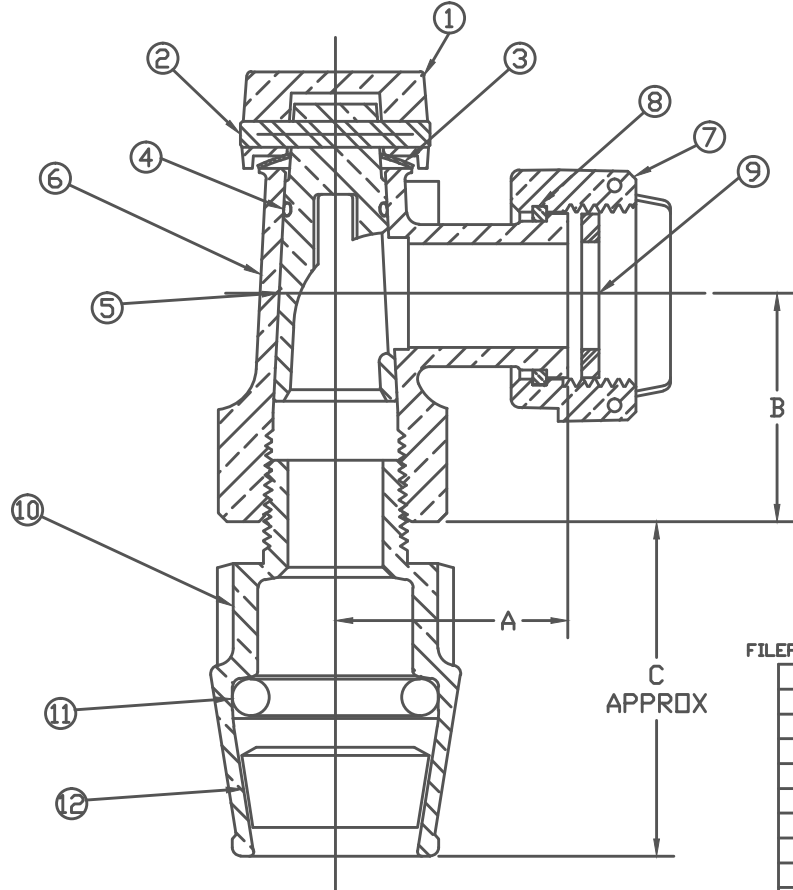


No.	DESCRIPTION	MATERIAL
1	KEY CAP	CAST BRASS ASTM B62 ALLOY C83600
2	PIN	BRASS ASTM B16 ALLOY C36000
3	SPRING WASHER	PHOS BRONZE
4	O-RING	EPDM ASTM D2000
5	KEY	CAST LOW LEAD BRASS ALLOY
6	BODY	CAST LOW LEAD BRASS ALLOY
7	SADDLE NUT	CAST BRASS ASTM B62 ALLOY C83600
8	SNAP RING	PHOS BRONZE
9	RUBBER GASKET	NITRILE ASTM D2000

No.	DESCRIPTION	MATERIAL
10	BODY	CAST LOW LEAD BRASS ALLOY
11	ORING	EP ASTM D2000
12	GRIP RING	CELCON

NOTE: ALL WETTED PARTS ARE LOW LEAD BRASS ALLOY

METER CONNX SIZE	A	B	C
5/8 x 3/4 x 3/4	1-11/16"	1-23/32"	2-7/16"
5/8 x 3/4 x 1	1-11/16"	1-41/64"	2-37/64"
1	1-15/16"	2-1/32"	2-37/64"



FILEPATH: PRODD-ENGMUELLER\ASYSUBMITTALS\H14266N

REV	ECR	DESCRIPTION	DATE	BY	CHKR

DRFTR|Garvir| 6/27/08
 CHKR
 ENGR
 MGR
 BY DATE
 STK No
 MAT'L

Mueller Co.

UNLESS OTHERWISE NOTED
 SURFACE PREPARATION:
 BREAK CORNER(S) ---- .000
 SURFACE FINISH -- XX RMS
 TOLERANCE(S):
 LINEAR ----- ± .000
 ANGULAR ----- ± 0°00'

THIRD ANGLE PROJECTION
 REF. No. SCALE
 NONE

DESCR. ANGLE METER STOP - LLB (MTR x IPS INSTA-TITE) PART NUMBER H14266N

PER EST NO: DXXXX EST FIN WT = 0.0000 lbs

PART NUMBER
H14266N
 442-MRKTG