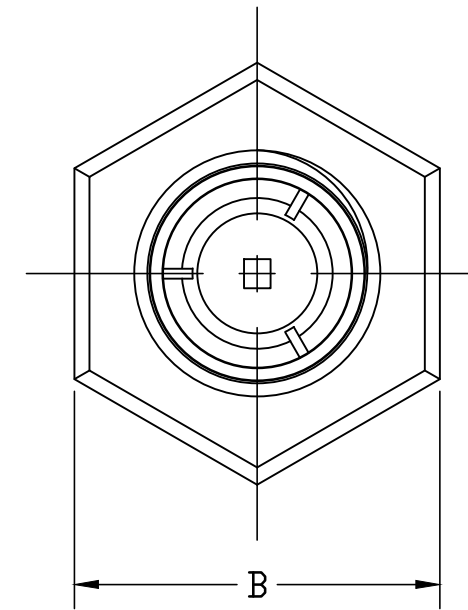
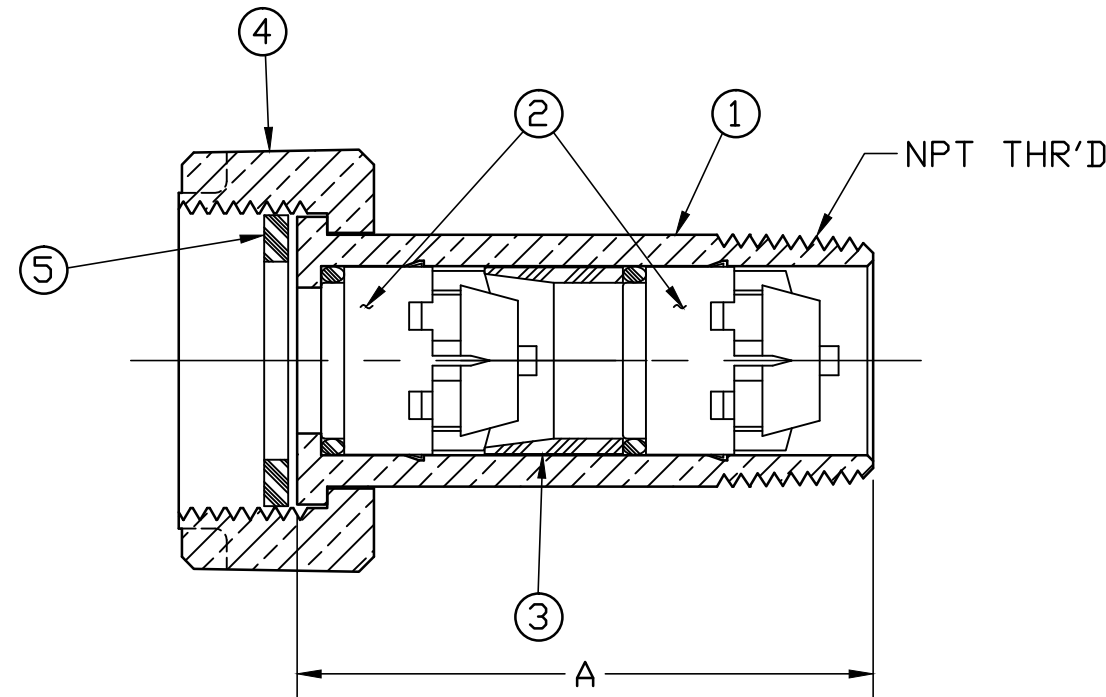


SIZE	A	B	NPT SIZE
3/4	2.500	1.56	3/4
1	3.000	1.88	1

No.	DESCRIPTION	MATERIAL
1	TAILPIECE	LOW LEAD BRASS ALLOY
2	CHECK W/ O-RING	CELCON M90/EPDM D2000
3	SPACER	CELCON M90
4	METER NUT	CAST BRASS ASTM B62 ALLLOY C83600
5	GASKET	NITRILE D2000



NOTE: ALL WETTED PARTS ARE LOW LEAD BRASS ALLOY

FILEPATH: PROD-ENG\MUELLER\SUBMITTALS\H14490N

DRFTR	JGarvin	6/15/11	Mueller Co.		
CHKR					
ENGR					
MGR					
			UNLESS OTHERWISE NOTED	THIRD ANGLE PROJECTION	
			SURFACE PREPARATION:		
			BREAK CORNER(S) ---- .000		
			SURFACE FINISH -- XX RMS	REF. No.	
			TOLERANCE(S):	SCALE	
			LINEAR ----- ± .000	FULL	
			ANGULAR ----- ± 0°00'		
			STK No:		
			MAT'L:		
			DESCR.	DWG NUMBER	
			5/8" x 3/4" x 3/4" & 1" LLB INLINE	H14490N	
			DUAL CHECK VALVE ASSEMBLY		
REV	ECR	DESCRIPTION	DATE	BY	CHKR
PER EST NO: DXXXX EST FIN WT = 0.0000 lbs					

DWG NUMBER
H14490N
44-MRKTG

TITLE TO AND OWNERSHIP OF THIS ENGINEERING DATA REMAINS IN Mueller Co. NO USE IS TO BE MADE OF THIS DATA EXCEPT AS SPECIFICALLY AUTHORIZED BY Mueller Co. ASSENT ON THE PART OF THE RECIPIENT TO THESE CONDITIONS IS PRESUMED.