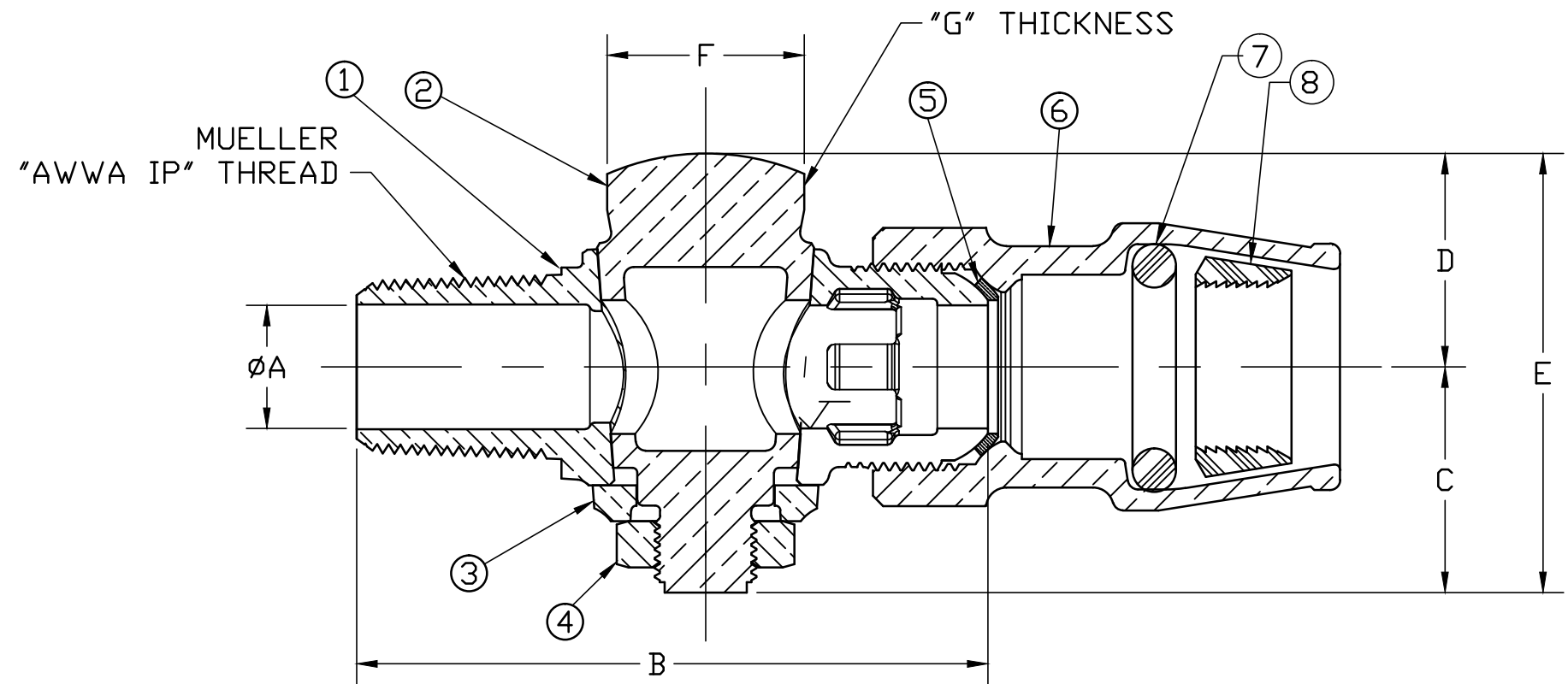


No.	DESCRIPTION	MATERIAL
1	BODY	CAST LOW LEAD BRASS ALLOY
2	KEY	CAST LOW LEAD BRASS ALLOY
3	KEY WASHER	CAST BRASS ASTM B62 ALLOY C83600
4	KEY NUT	CAST BRASS ASTM B62 ALLOY C83600
5	COPPER GASKET	COPPER SHEET ASTM B152 UNS C11000
6	INSTA-TITE BODY	CAST LOW LEAD BRASS ALLOY
7	O-RING	EP ASTM D2000
8	GRIP RING	CELCON M90 NATURAL CF2001

SIZE	ØA	B	C	D	E	F	G
3/4	.75	3.84	1.38	1.3	2.68	1.20	.38
1	.92	4.52	1.46	1.41	2.87	1.48	.38



ALL WETTED PARTS ARE LOW LEAD BRASS ALLOY

FILEPATH: PROD-ENG\MUELLER\ASYSUBMITTALS\H15026N

DRFTR	RWB	2/19/16	Mueller Co.	
CHKR				
ENGR				
MGR				
UNLESS OTHERWISE NOTED			THIRD ANGLE PROJECTION	
SURFACE PREPARATION:				
BREAK CORNER(S) ---- .000				
SURFACE FINISH -- XX RMS			REF. No.	SCALE
TOLERANCE(S):			FULL	
LINEAR ----- ± .000				
ANGULAR ----- ± 0°00'				
BY DATE				
STK No:				
MAT'L:				
DESCR.			LLB CORPORATION STOP	
			('AWWA IP' x INSTA-TITE)	
DWG NUMBER			H15026N	

DWG NUMBER
H15026N
442-MRKTG

TITLE TO AND OWNERSHIP OF THIS ENGINEERING DATA REMAINS IN Mueller Co. NO USE IS TO BE MADE OF THIS DATA EXCEPT AS SPECIFICALLY AUTHORIZED BY Mueller Co. ASSENT ON THE PART OF THE RECIPIENT TO THESE CONDITIONS IS PRESUMED.

REV	ECR	DESCRIPTION	DATE	BY	CHKR
PER EST NO:	DXXXX	EST FIN	WT = 0.0000	lbs	