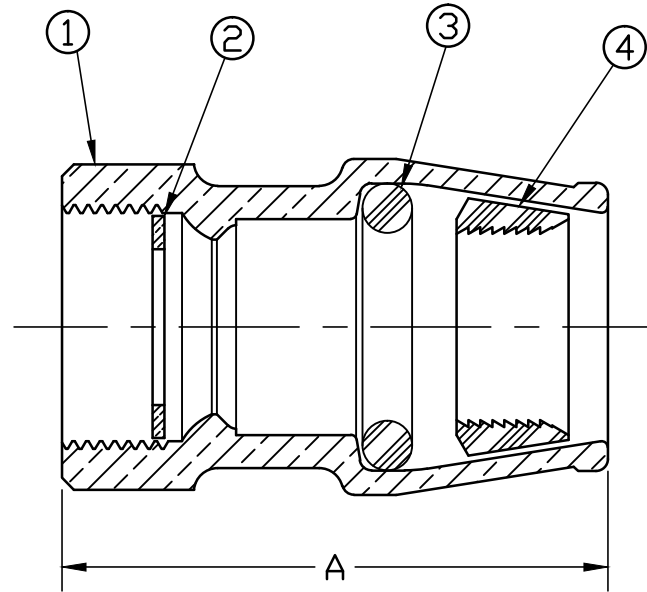


No.	DESCRIPTION	MATERIAL
1	SPUD	CAST LOW LEAD BRASS ALLOY
2	COPPER GASKET	COPPER ASTM B152 ALLOY C11000
3	O-RING	EP ASTM D2000 RUBBER
4	GRIP RING	CELCON M90 WHITE PLASTIC



SIZE	A
3/4	2.84
3/4x1	3.16
1	3.16

ALL WETTED PARTS ARE LOW LEAD BRASS ALLOY

FILEPATH: PROD-ENG\MUELLER\ASYSUBMITTALS\H15073N

						DRFTR	RWB	5/29/13	<b>Mueller Co.</b>	UNLESS OTHERWISE NOTED THIRD ANGLE PROJECTION SURFACE PREPARATION: BREAK CORNER(S) ---- .000 SURFACE FINISH -- XX RMS TOLERANCE(S): LINEAR ----- ± .000 ANGULAR ----- ± 0°00'	REF. No.	SCALE FULL		
						CHKR								
						ENGR								
						MGR								
							BY	DATE						
							STK No:							
							MAT'L:							
							DESCR.							
									LLB CORP STOP COUPLING ("CS" COUPLING x INSTA-TITE)			DWG NUMBER H15073N		
							REV	ECR	DESCRIPTION	DATE	BY	CHKR		
							PER EST NO: DXXXX EST FIN WT = 0.0000 lbs							

DWG NUMBER  
H15073N  
442-MRKTG

TITLE TO AND OWNERSHIP OF THIS ENGINEERING  
DATA REMAINS IN Mueller Co. NO USE IS TO BE  
MADE OF THIS DATA EXCEPT AS SPECIFICALLY  
AUTHORIZED BY Mueller Co. ASSENT ON THE PART  
OF THE RECIPIENT TO THESE CONDITIONS IS PRESUMED