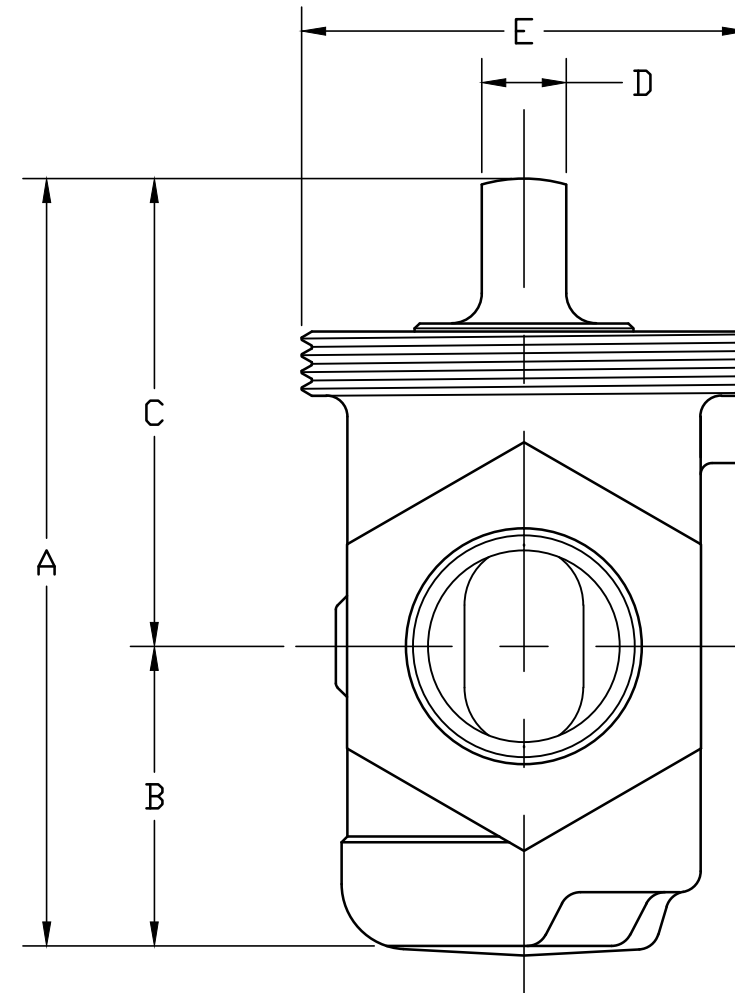
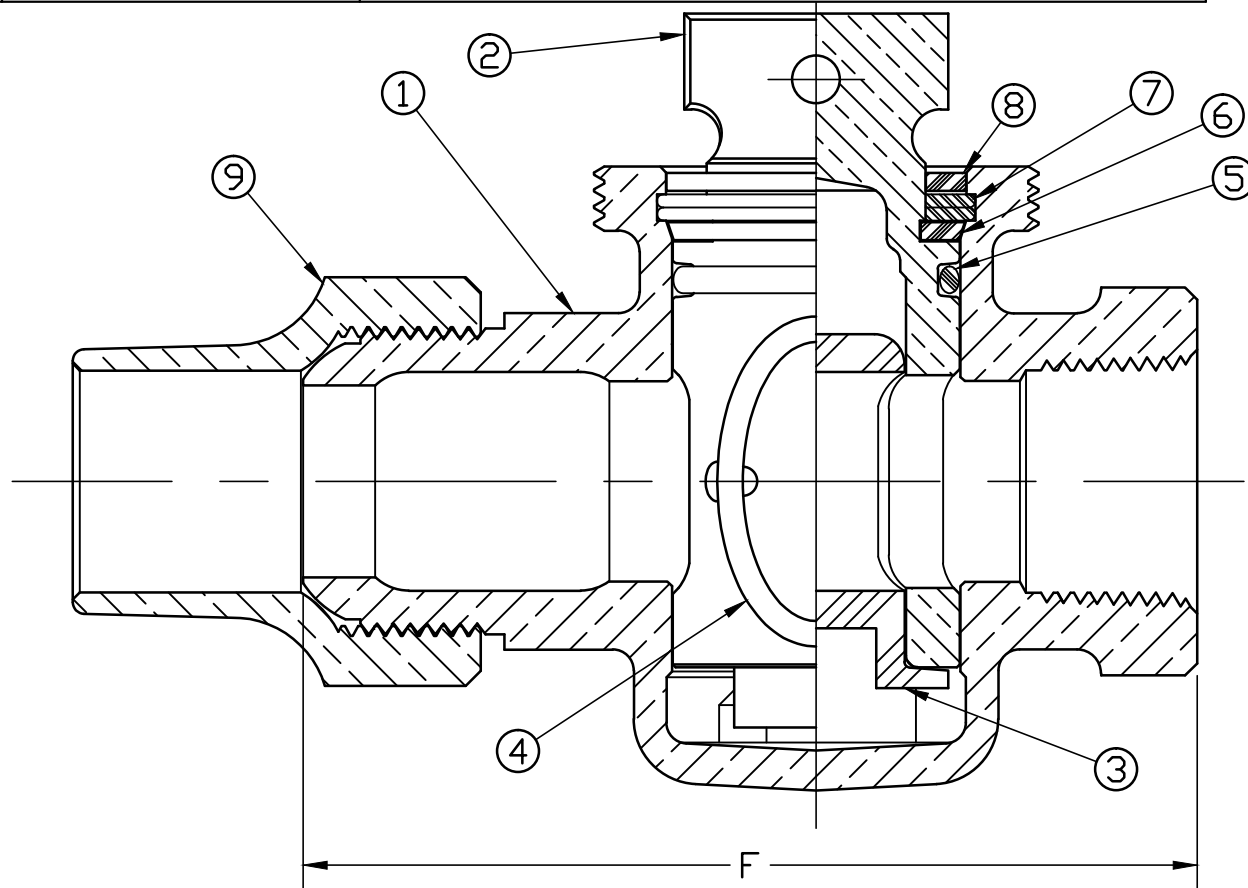


No.	DESCRIPTION	MATERIAL
1	BODY	CAST LOW LEAD BRASS ALLOY
2	KEY	CAST LOW LEAD BRASS ALLOY
3	KEY INSERT	CYCOLACL ASTM D1788-62T TYPE 1 GR 1
4	PORT O-RING	RUBBER
5	TOP O-RING	RUBBER
6	THRUST WASHER	CELCON GRADE M90-04
7	RETAINING RING	PHOSPHOR BRONZE ASTM B103
8	TOP SEAL	RUBBER
9	TUBE NUT	CAST BRASS ASTM B62 ALLOY C83600

SIZE	A	B	C	D	E	F
3/4"	3.45	1.34	2.11	.44	1.848-11 1/2	3.86
1"	4.00	1.56	2.44	.50	2.316-11 1/2	4.66
1 1/4"	4.38	1.73	2.64	.53	2.798-8	5.48
1 1/2"	5.51	2.09	3.42	.53	3.401-8	6.03
2"	6.05	2.34	3.70	.56	3.893-8	7.20



ALL WETTED PARTS ARE LOW LEAD BRASS ALLOY

FILEPATH: PROD-ENG\MUELLER\ASYSUBMITTALS\H15174N

DRFTR	RWB	8/21/13		
CHKR				
ENGR				
MGR				
			UNLESS OTHERWISE NOTED	THIRD ANGLE PROJECTION
			SURFACE PREPARATION:	
			BREAK CORNER(S) ---- .000	
			SURFACE FINISH -- XX RMS	REF. No.
			TOLERANCE(S):	SCALE
			LINEAR ----- ± .000	FULL
			ANGULAR ----- ± 0°00'	
			STK No:	
			MAT'L:	
			DESCR.	
			MARK II ORISEAL LLB VALVE	DWG NUMBER
			(CS x FIP)	H15174N

TITLE TO AND OWNERSHIP OF THIS ENGINEERING DATA REMAINS IN Mueller Co. NO USE IS TO BE MADE OF THIS DATA EXCEPT AS SPECIFICALLY AUTHORIZED BY Mueller Co. ASSENT ON THE PART OF THE RECIPIENT TO THESE CONDITIONS IS PRESUMED

REV ECR DESCRIPTION DATE BY CHKR

PER EST NO: DXXXX EST FIN WT = 0.0000 lbs

DWG NUMBER H15174N
 WAS EXP NO: 442-MRKTG