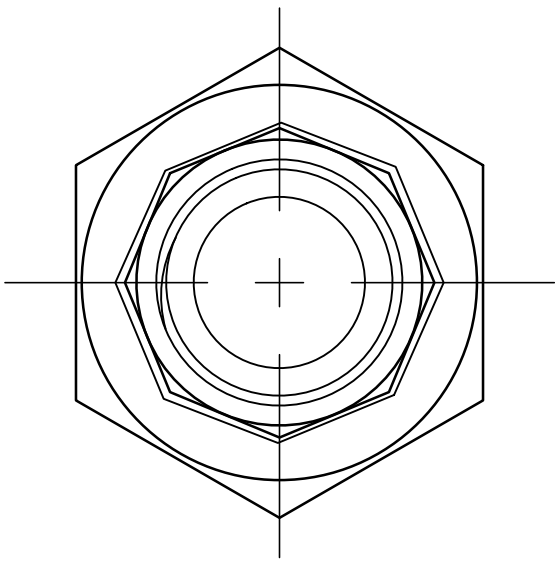
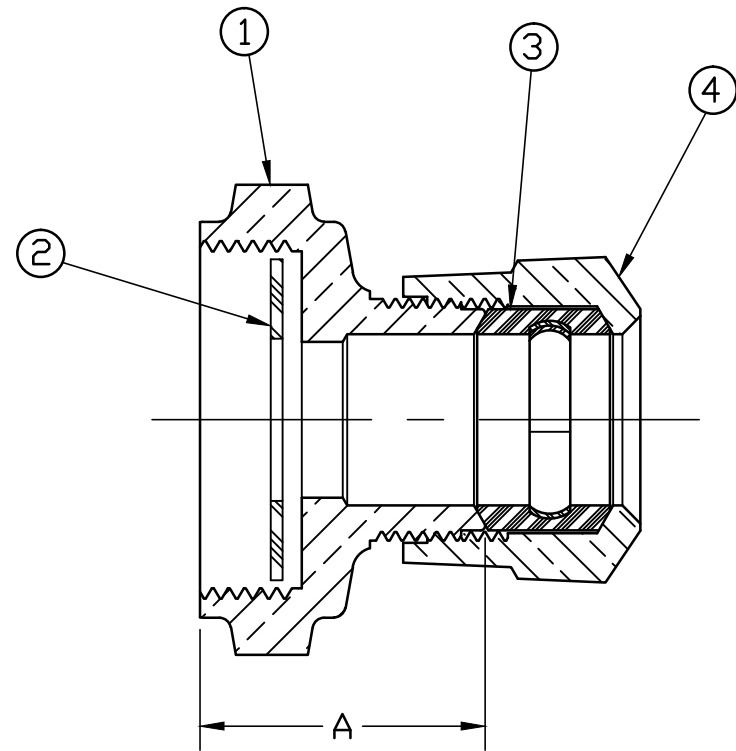


No.	DESCRIPTION	MATERIAL
1	SPUD	CAST LOW LEAD BRASS ALLOY
2	GASKET	FIBER ASTM D710
3	CTS GASKET SUB	ASTM D2000(SBR)&410 STAINLESS STL
4	CONNX NUT	CAST BRASS ASTM B62 ALLOY C83600



SIZE	A
1/2" x 3/4"	1.41
5/8" x 3/4"	1.40
3/4"	1.49
1"	1.64

NOTE: ALL WETTED PARTS ARE LOW LEAD BRASS ALLOY

FILEPATH: PROD-ENG\MUELLER\ASYSUBMITTALS\H15509N

DRFTR	RWB	7/1/13	<b>Mueller Co.</b>	THIRD ANGLE PROJECTION 					
CHKR									
ENGR									
MGR									
	BY	DATE	UNLESS OTHERWISE NOTED	REF. No.					
			SURFACE PREPARATION:	SCALE					
			BREAK CORNER(S) ---- .000	FULL					
			SURFACE FINISH -- XX RMS						
			TOLERANCE(S):						
			LINEAR ----- ± .000						
			ANGULAR ----- ± 0°00'						
REV	ECR	DESCRIPTION	DATE	BY	CHKR	STK No:	MAT'L:	DESCR.	DWG NUMBER
								CORP STOP COUPLING	H15509N
								LLB (XS LEAD FLANGE x CTS 110)	

DWG NUMBER  
H15509N  
442-MRKTG

TITLE TO AND OWNERSHIP OF THIS ENGINEERING DATA REMAINS IN Mueller Co. NO USE IS TO BE MADE OF THIS DATA EXCEPT AS SPECIFICALLY AUTHORIZED BY Mueller Co. ASSENT ON THE PART OF THE RECIPIENT TO THESE CONDITIONS IS PRESUMED

PER EST NO: DXXXX EST FIN WT = 0.00000 lbs