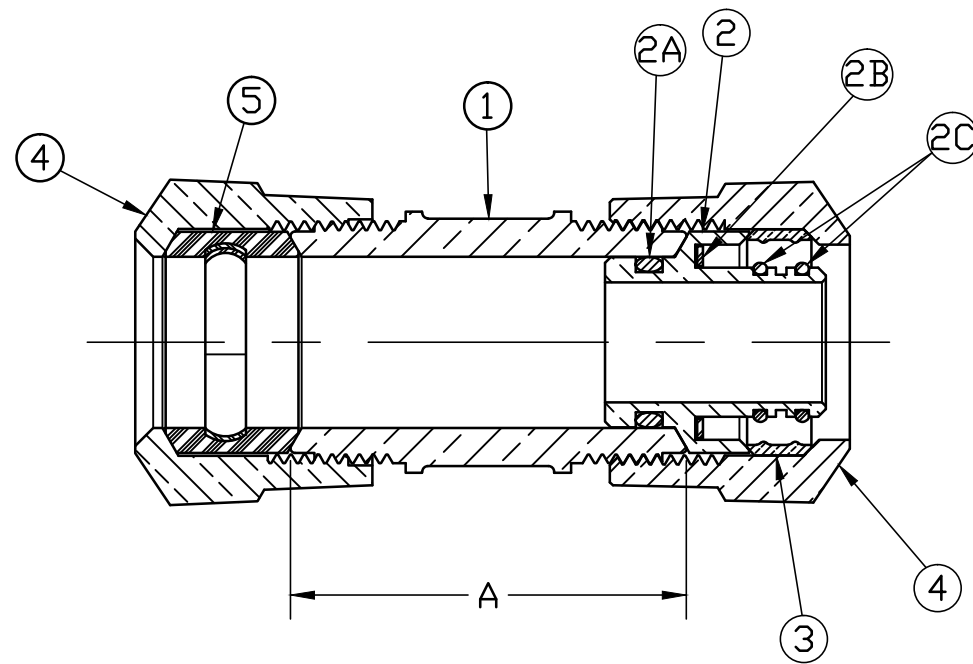


No.	DESCRIPTION	MATERIAL
1	SPUD	CAST LOW LEAD BRASS ALLOY
2	TAILPIECE SUB	CAST LOW LEAD BRASS ALLOY
2A	O-RING	SILICONE
2B	WASHER	LDPE
2C	O-RING	EPDM
3	GRIPPER BAND	BRASS ASTM B62 ALLOY C83600
4	CONNX NUT	CAST BRASS ASTM B62 ALLOY C83600
5	CTS GSKT SUB	SBR D2000 - GSKT 410ss - BAND



SIZE	A
3/4"	2.062
3/4" x 1"	1.835
1"	2.406
1" x 3/4"	1.835

ALL WETTED PARTS ARE LOW LEAD BRASS ALLOY

FILEPATH: PROD-ENG\MUELLER\ASYSUBMITTALS\K15078N

						DRFTR	RWB	4/11/17	<b>Mueller Co.</b>	
						CHKR				
						ENGR				
						MGR				
									UNLESS OTHERWISE NOTED	THIRD ANGLE PROJECTION
									SURFACE PREPARATION:	
									BREAK CORNER(S) ---- .000	
									SURFACE FINISH -- XX RMS	REF. No.
									TOLERANCE(S):	SCALE
									LINEAR ----- ± .000	NONE
									ANGULAR ----- ± 0°00'	
						STK No:				
						MAT'L:				
						DESCR.	LLB STRAIGHT SERVICE FITTING (110 CTS x KITEC)			DWG NUMBER K15078N
REV	ECR	DESCRIPTION	DATE	BY	CHKR	PER EST NO: DXXXX EST FIN WT = 0.0000 lbs				

DWG NUMBER  
K15078N  
442-MRKTG

TITLE TO AND OWNERSHIP OF THIS ENGINEERING DATA REMAINS IN Mueller Co. NO USE IS TO BE MADE OF THIS DATA EXCEPT AS SPECIFICALLY AUTHORIZED BY Mueller Co. ASSENT ON THE PART OF THE RECIPIENT TO THESE CONDITIONS IS PRESUMED.