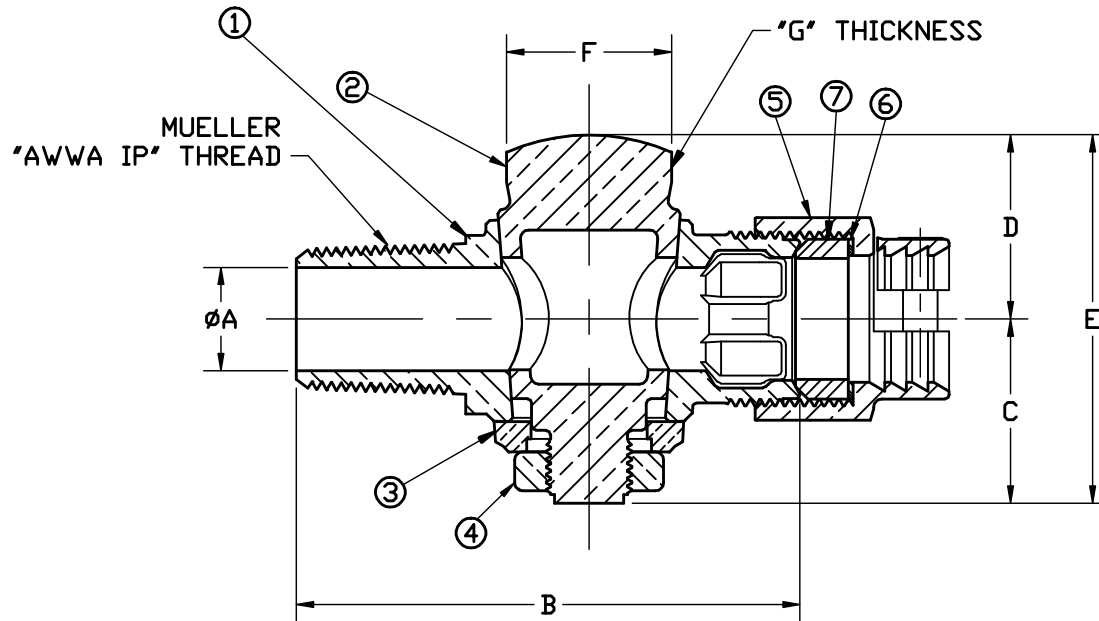


No.	DESCRIPTION	MATERIAL
1	BODY	CAST LOW LEAD BRASS
2	KEY	CAST LOW LEAD BRASS
3	KEY WASHER	CAST BRONZE ASTM B62 ALLOY C83600
4	KEY NUT	CAST BRONZE ASTM B62 ALLOY C83600
5	PJ CPLG NUT	CAST BRONZE ASTM B62 ALLOY C83600
6	PJ GASKET	ASTM D2000 NITRILE
7	PJ WASHER	POLYPROPYLENE

SIZE	ØA	B	C	D	E	F	G
3/4	.75	3.66	1.38	1.3	2.68	1.20	.38
1	.92	4.31	1.46	1.41	2.87	1.48	.38



FILEPATH: PROD-ENG\MUELLER\APPROVED\P15028N

						DRFTR JGarvin 4/7/09			UNLESS OTHERWISE NOTED SURFACE PREPARATION: BREAK CORNER(S) ---- .000 SURFACE FINISH -- 000 RMS TOLERANCE(S): LINEAR ----- ± .000 ANGULAR ----- ± 0°00'			
						CHKR					THIRD ANGLE PROJECTION	
						ENGR					REF. No. SCALE	
						MGR					FULL	
						BY	DATE					
						STK No:						
						MAT'L:						
REV	ECR	DESCRIPTION	DATE	BY	CHKR	DESCR. CORPORATION STOP - LOW LEAD BRASS ('AWWA IP' x CTS PACK JOINT)			PART NUMBER P15028N			
PER EST NO: DXXXX EST FIN WT = 0.0000 lbs												

PART NUMBER
P15028N
442-MRKTG