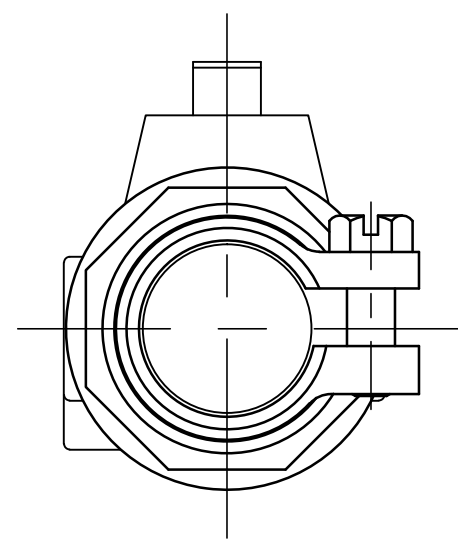
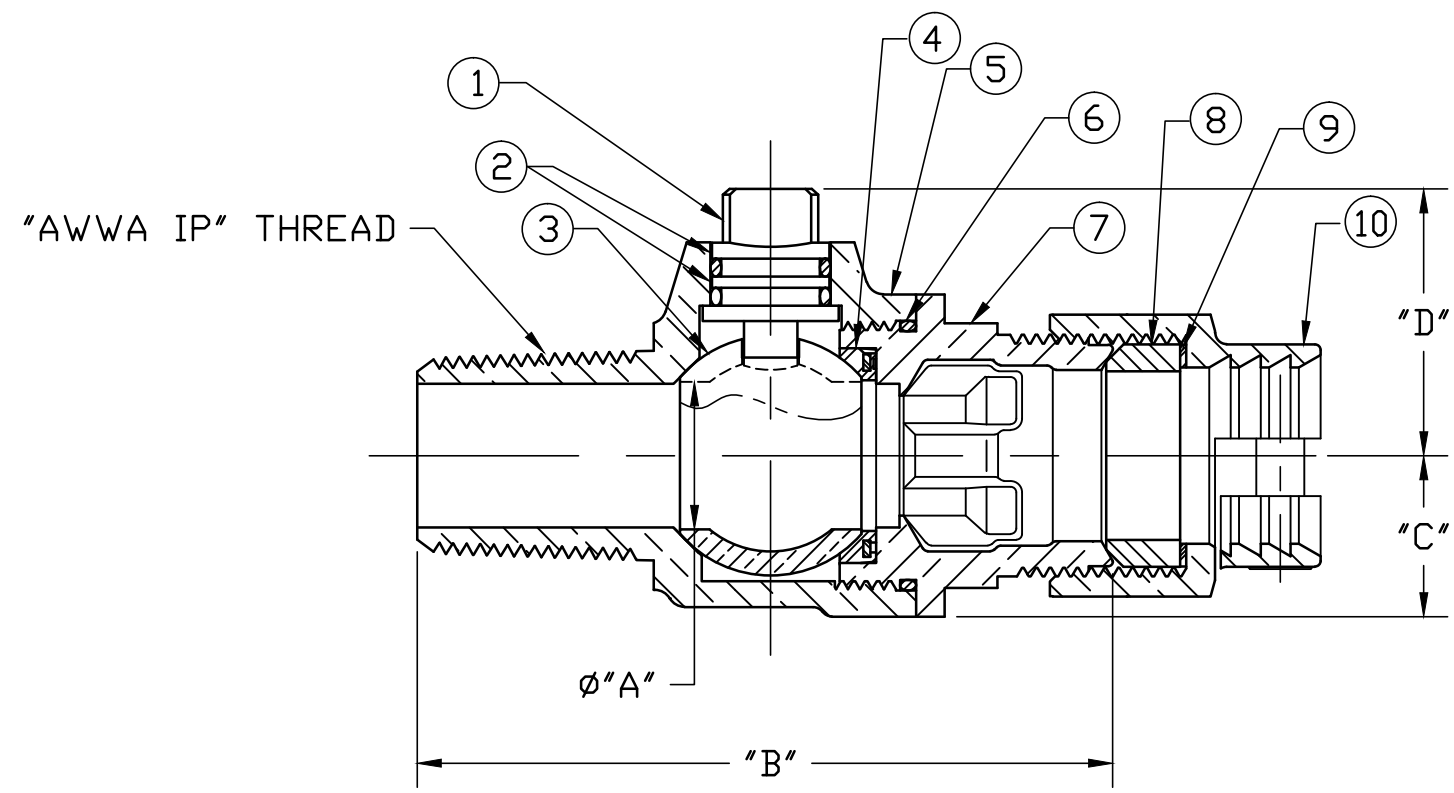


No.	QTY.	DESCRIPTION	MATERIAL
1	1	STEM	LOW LEAD BRASS ALLOY
2	2	O-RING	EPDM D2000
3	1	BALL	LOW LEAD BRASS ALLOY
4	1	GASKET - SEAL	NITRILE D2000
5	1	BODY	CAST LOW LEAD BRASS ALLOY
6	1	O-RING	EPDM D2000
7	1	END PIECE	CAST LOW LEAD BRASS ALLOY
8	1	PJ CTS GSKT	BUNA N ASTM D2000
9	1	PJ WASHER	POLYPROPYLENE
10	1	CLPG NUT SUB	CAST BRASS ASTM B62 ALLOY C83600



SIZE	ØA	B	C	D
3/4	.75	3.62	.84	1.36
3/4x1	.75	3.86	.84	1.39
1	1.00	4.65	1.15	1.56
1-1/2	1.50	5.16	1.50	2.12
2	2.00	5.61	1.82	2.44

ALL WETTED PARTS ARE LOW LEAD BRASS ALLOY

FILEPATH: PROD-ENG\MUELLER\ASYSUBMITTALS\P25028N

DRFTR	JGarvin	10/4/11	Mueller Co.	
CHKR				
ENGR				
MGR				
UNLESS OTHERWISE NOTED			THIRD ANGLE PROJECTION	
SURFACE PREPARATION:				
BREAK CORNER(S) ---- .000				
SURFACE FINISH -- XX RMS			REF. No.	SCALE
TOLERANCE(S):			NONE	
LINEAR ----- ± .000				
ANGULAR ----- ± 0°00'				
BY			DATE	
STK No:				
MAT'L:				
DESCR.			LLB CORPORATION STOP BALL VALVE	
			("AWWA IP" x PJ CTS)	
REV			ECR	DESCRIPTION
DATE			BY	CHKR
PER EST NO: DXXXX			EST FIN WT = 0.0000 lbs	
			DWG NUMBER	
			P25028N	

DWG NUMBER
P25028N
442-MRKTG

TITLE TO AND OWNERSHIP OF THIS ENGINEERING DATA REMAINS IN Mueller Co. NO USE IS TO BE MADE OF THIS DATA EXCEPT AS SPECIFICALLY AUTHORIZED BY Mueller Co. ASSENT ON THE PART OF THE RECIPIENT TO THESE CONDITIONS IS PRESUMED.