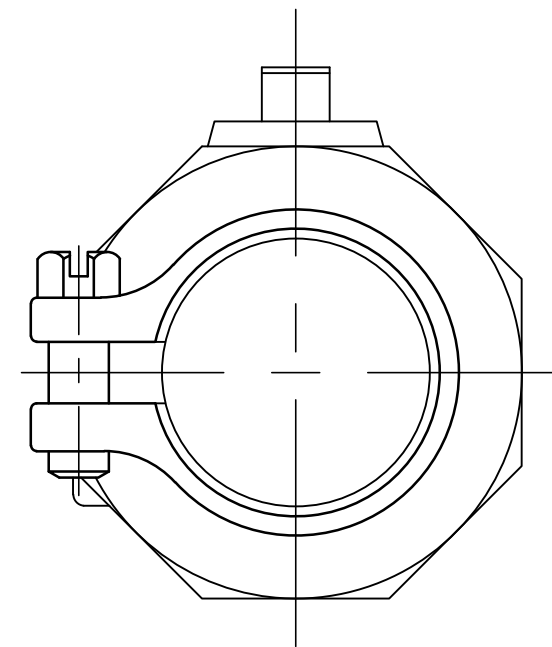
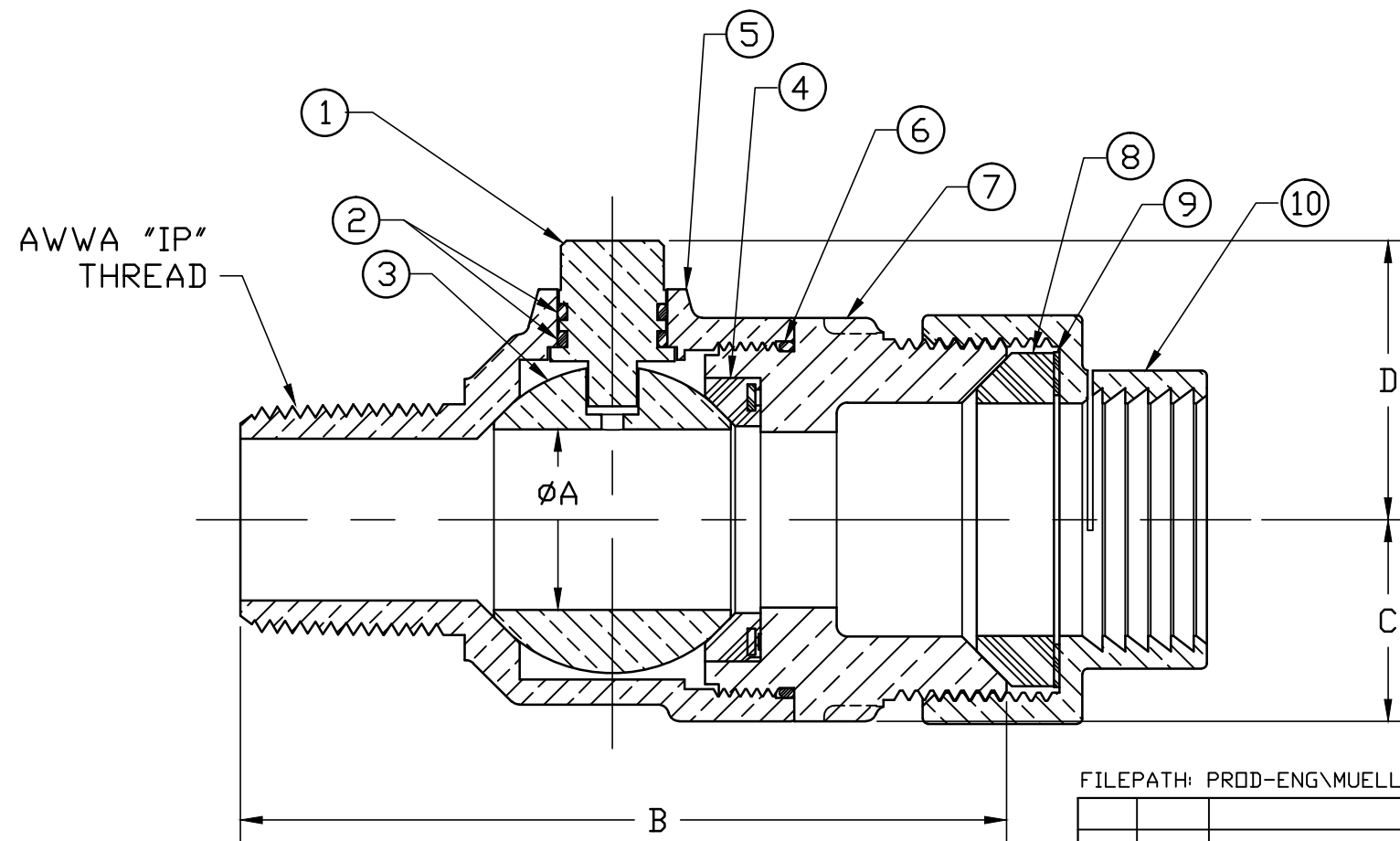


No.	QTY	DESCRIPTION	MATERIAL
1	1	STEM	LOW LEAD BRASS ALLOY
2	1	O-RING	EPDM ASTM D2000
3	1	BALL	LOW LEAD BRASS ALLOY
4	1	GASKET - SEAL	NITRILE ASTM D2000
5	1	BODY	CAST LOW LEAD BRASS ALLOY
6	1	O-RING	EPDM ASTM D2000
7	1	END PIECE	CAST LOW LEAD BRASS ALLOY
8	1	COMP GSKT	NITRILE ASTM D2000
9	1	WASHER	POLYPROPYLENE
10	1	CPLG NUT	CAST BRASS ASTM B62 ALLOY C83600

SIZE	ØA	B	C	D
1"	1.00	4.37	1.15	1.59
1-1/2"	1.50	5.38	1.50	2.24
2"	2.00	6.15	1.82	2.56



ALL WETTED PARTS ARE LOW LEAD BRASS ALLOY

FILEPATH: PROD-ENG\MUELLER\APPROVED\V25058N

DRFTR	JGarvin	1/24/07
CHKR		
ENGR		
MGR		
BY	DATE	
STK No:		
MAT'L:		
DESCR.	LLB BALL CORPORATION VALVE (AWWA IP x PJ IPS PVC)	
REV	ECR	DESCRIPTION
DATE	BY	CHKR
PER EST NO: X-XXXX EST FIN WT = 0.0000 lbs		

Mueller Co.

UNLESS OTHERWISE NOTED
 SURFACE PREPARATION:
 BREAK CORNER(S) ---- .000
 SURFACE FINISH -- XX RMS
 TOLERANCE(S):
 LINEAR ----- ± .000
 ANGULAR ----- ± 0°00'

THIRD ANGLE PROJECTION

 REF. No. SCALE

DWG NUMBER
V25058N
 MRKTNG

TITLE TO AND OWNERSHIP OF THIS ENGINEERING DATA REMAINS IN Mueller Co. NO USE IS TO BE MADE OF THIS DATA EXCEPT AS SPECIFICALLY AUTHORIZED BY Mueller Co. ASSENT ON THE PART OF THE RECIPIENT TO THESE CONDITIONS IS PRESUMED

DWG NUMBER
V25058N