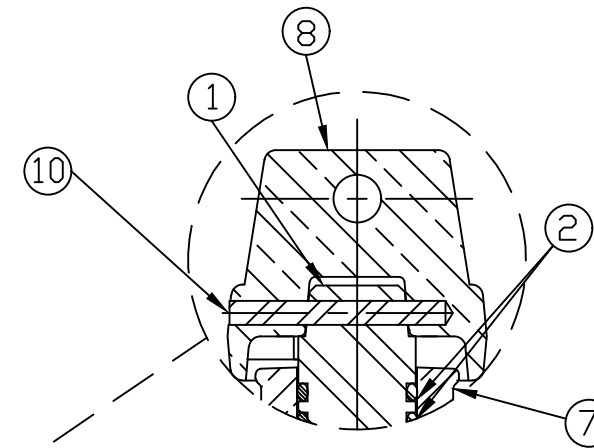
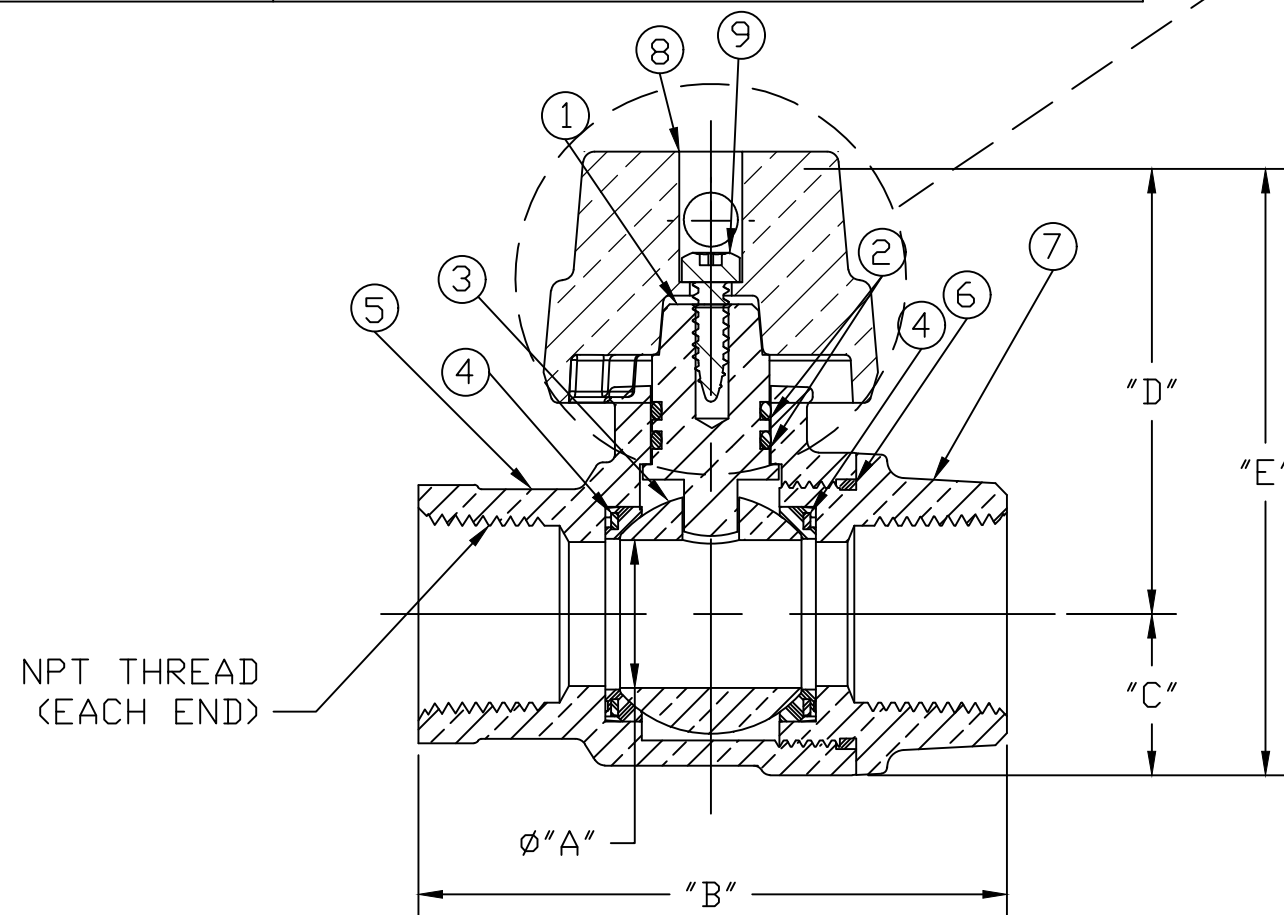


No.	DESCRIPTION	MATERIAL
1	STEM	LEAD FREE BRASS ALLOY ASTM B584/B371
2	O-RING	EPDM D2000
3	BALL	NO LEAD BRASS ALLOY
4	GASKET - SEAL	EPDM D2000
5	BODY	CAST NO LEAD BRASS ALLOY
6	O-RING	EPDM D2000
7	END PIECE	CAST NO LEAD BRASS ALLOY
8	CAP	CAST BRASS ASTM B62 ALLOY C83600
9	SCREW	18-8 STAINLESS STEEL
1-1/2 & 2 ONLY		
10	SOLID PIN	AISI 303 STAINLESS STEEL



1-1/2 & 2 DETAIL ONLY



SIZE	ϕA	B	C	D	E
3/4R	.625	2.969	.750	2.120	2.870
3/4	.750	3.070	.840	2.323	3.163
1R	.750	3.522	.840	2.323	3.163
1	1.000	3.972	1.150	2.567	3.717
1x3/4	.750	3.287	.840	2.627	3.467
1-1/2	1.500	4.134	1.500	3.372	4.872
2	2.000	4.940	1.820	3.919	5.739

NPT THREAD
(EACH END)

MEETS ALL REQUIREMENTS OF AWWA C800
 ALL STEMS ARE LEAD FREE BRASS ALLOY C89833/C69300
 ALL WETTED PARTS ARE LEAD FREE BRASS ALLOY C89833/C87850
 ALL NON WETTED PARTS ARE BRASS ALLOY C83600/C87850

DWG NUMBER
B20283N

DRFTR	AD	03/10/23	MUELLER	
CHKR				
ENGR			UNLESS OTHERWISE NOTED SURFACE PREPARATION: BREAK CORNER(S) ---- .000 SURFACE FINISH -- XX RMS	THIRD ANGLE PROJECTION
MGR				REF. No.
	BY	DATE	LINEAR ----- \pm .000	NONE
			ANGULAR ----- \pm 0°00'	
STK No:				
MAT'L:				
DESCR.			DWG NUMBER	
INLINE CURB BALL VALVE (FIP x FIP)			B20283N	

TITLE TO AND OWNERSHIP OF THIS ENGINEERING
 DATA REMAINS IN Mueller Co. NO USE IS TO BE
 MADE OF THIS DATA EXCEPT AS SPECIFICALLY
 AUTHORIZED BY Mueller Co. ASSENT ON THE PART
 OF THE RECIPIENT TO THESE CONDITIONS IS PRESUMED