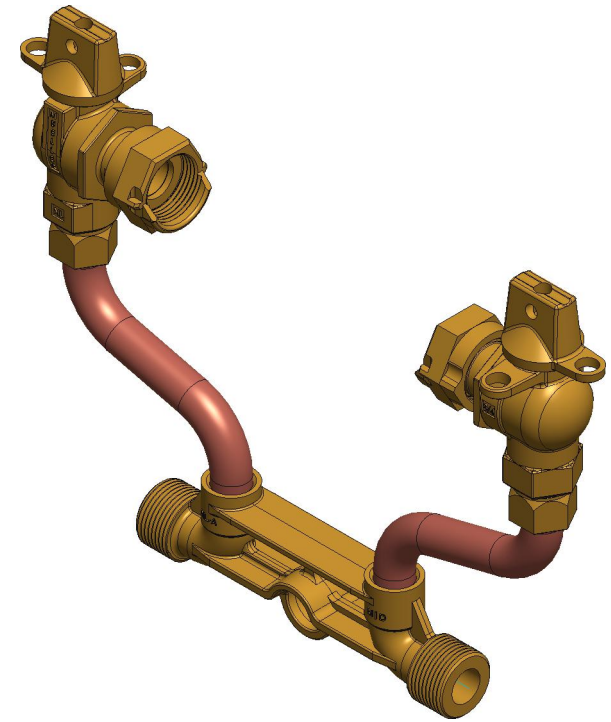
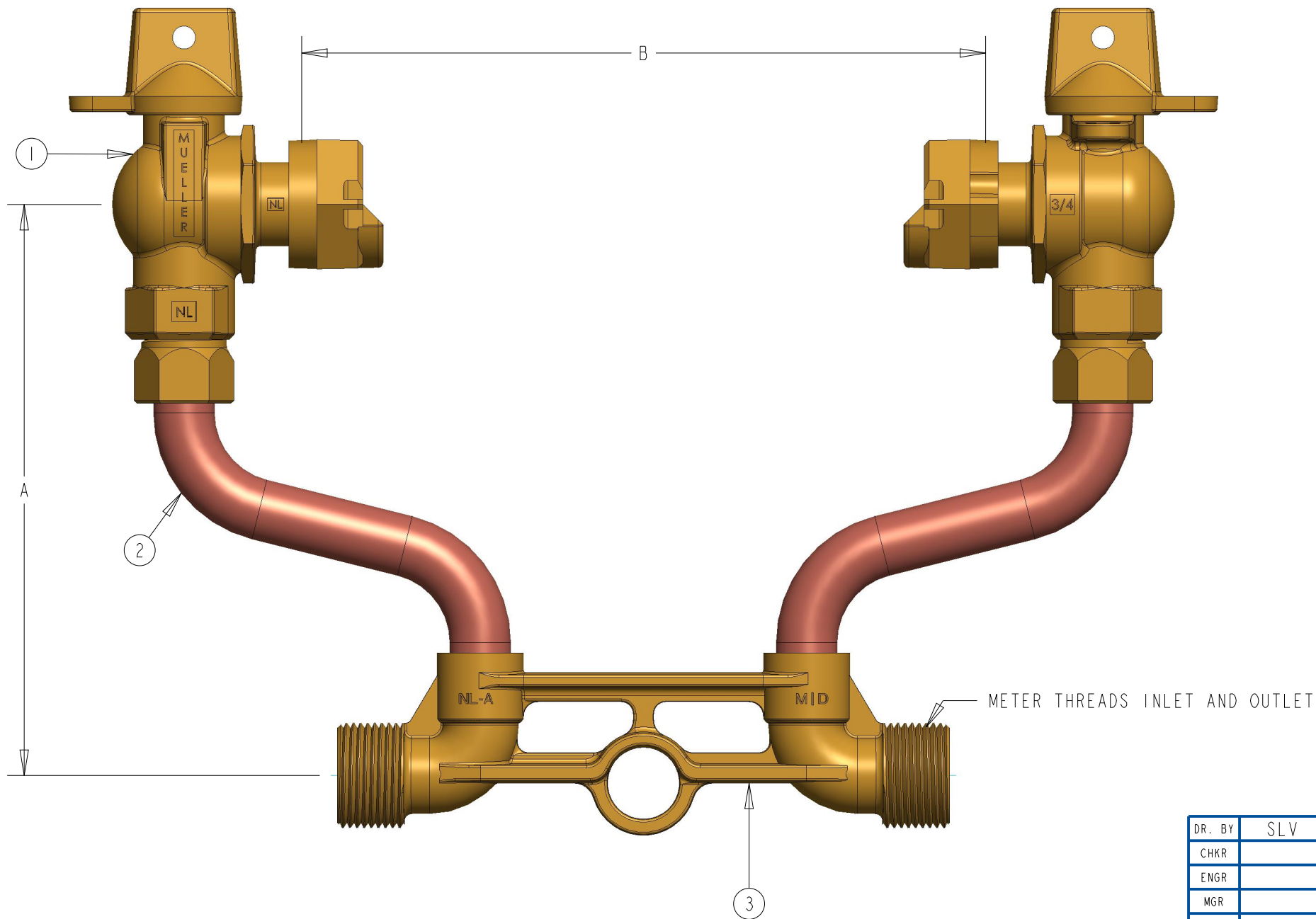


METER SIZE	5/8"	5/8"X3/4"	3/4"	1"
A (MINIMUM)	7"	7"	8"	10"
B	7-7/8"	7-7/8"	9-3/8"	11-1/8"
FULL PORT BALL VALVE	203B24265N	215B24265N	215B24265N	330B24265N
METER BAR	532079E	532086E	508597E	532221E

ITEM NO.	PART NUMBER	QTY.	DESCRIPTION	MATERIAL
1	B24265N	2	BALL METER VALVE	LEAD FREE BRASS ALLOY ASTM B584 C89833/C87850
2	-	2	RISER SUB ASSEMBLY	COPPER ALLOY C12200
3	-	1	METER BAR	LEAD FREE BRASS ALLOY ASTM B584 C89833/C87850



OPTION CODE:
*BALL METER VALVE INLET AND OUTLET

B24118---02N

DR. BY	SLV	3/6/19	UNLESS OTHERWISE NOTED	THIRD ANGLE PROJECTION	C.B. NO.
CHKR			BREAK CAST CORNER(S)---		
ENGR			BREAK MACH CORNER(S)---	PURCH.	PATT. NO.
MGR			TOLERANCES	FINISH	
MFG			UNLESS OTHERWISE NOTED	REF. NO.	SCALE
TOOL			LINEAR		NONE
FDRY			±	ANGULAR	STK. NO.
MAT'L:					
MUELLER		DESCR.	COPPER METER SETTER LOW LEAD BRASS		NUMBER B24118---02N