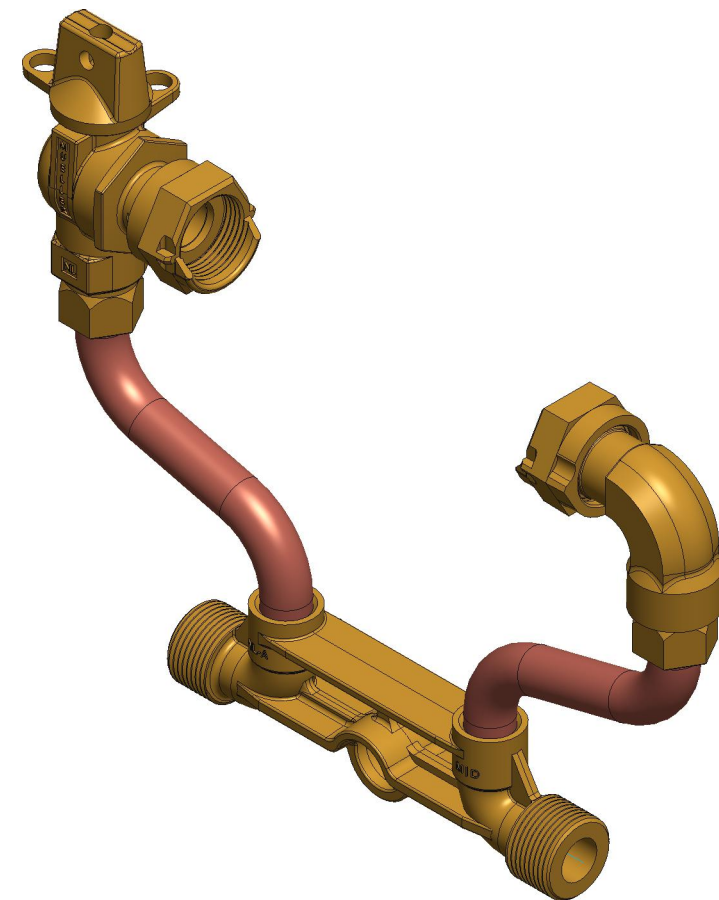
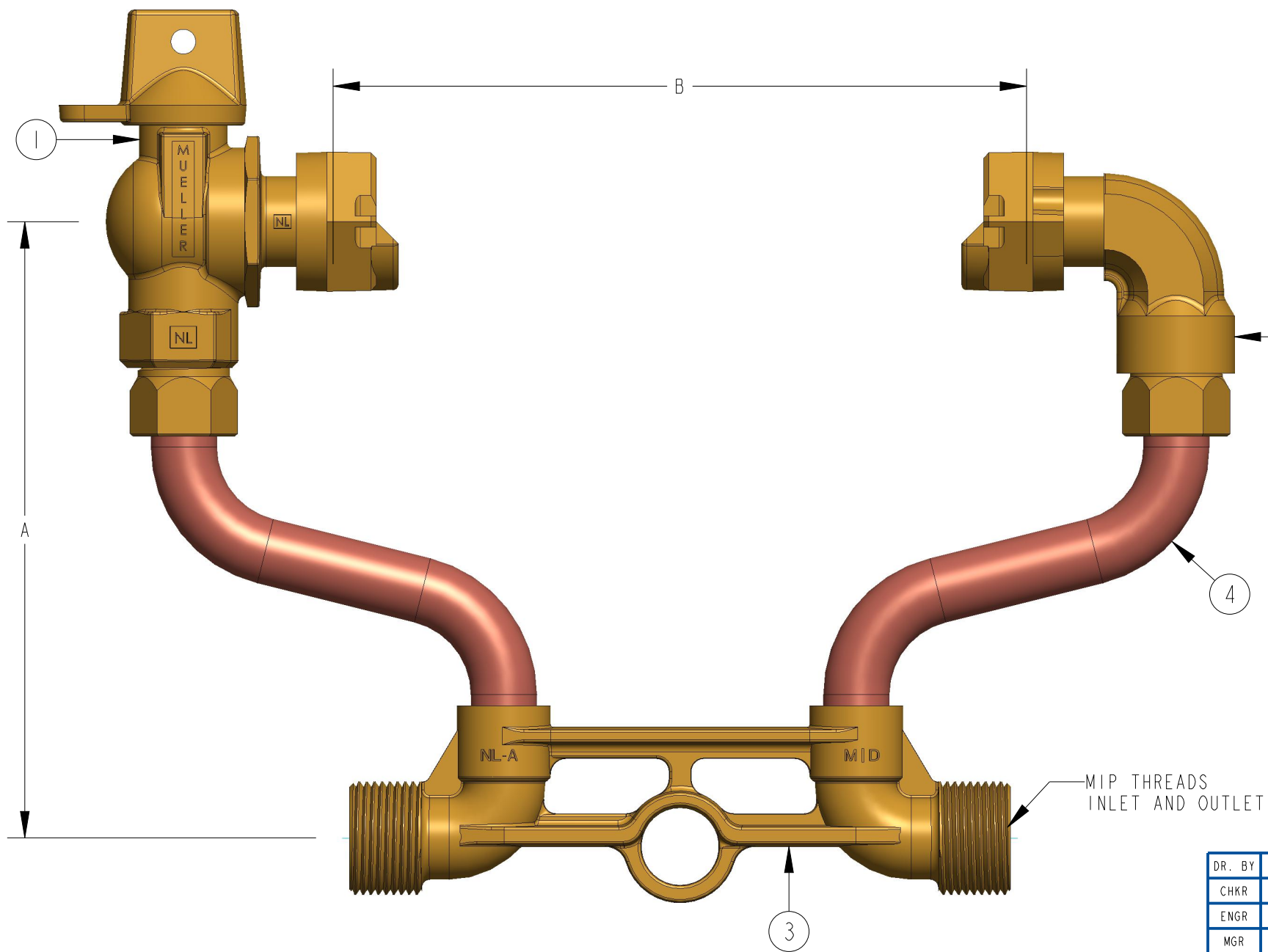


METER SIZE	5/8"	5/8"X3/4"	3/4"	1"
A (MINIMUM)	7"	7"	8"	10"
B	7-7/8"	7-7/8"	9-3/8"	11-1/8"
FULL PORT BALL VALVE	203B24265N	215B24265N	215B24265N	330B24265N
METER COUPLING	203HI4210N	215HI4210N	215HI4210N	330HI4210N
METER BAR	532079E	532086E	508597E	532221E

ITEM NO	PART NUMBER	QTY	DESCRIPTION	MATERIAL
1	B24265N	1	FULL PORT BALL VALVE	LEAD FREE BRASS ALLOY ASTM B584 C89833/C87850
2	HI4210N	1	METER COUPLING (SWIVEL NUT)	LEAD FREE BRASS ALLOY ASTM B584 C89833/C87850
3		1	METER BAR	LEAD FREE BRASS ALLOY ASTM B584 C89833/C87850
4		2	RISER SUB ASSEMBLY	COPPER ALLOY C12200



OPTION CODE 35:

*ANGLE METER COUPLING ON OUTLET RISER

DR. BY	AOD	7/01/22	UNLESS OTHERWISE NOTED		THIRD ANGLE PROJECTION	C.B. NO.
CHKR			BREAK CAST CORNER(S)---			
ENGR			BREAK MACH CORNER(S)---			PURCH.
MGR			TOLERANCES		REF. NO.	PATT. NO.
MFG			UNLESS OTHERWISE NOTED		SCALE	
TOOL			LINEAR	ANGULAR	NONE	
FDRY			±	±	STK. NO.	

MAT'L:		
	DESCR. COPPER METER SETTER LEAD FREE BRASS	NUMBER B24118---35N

B24118---35N