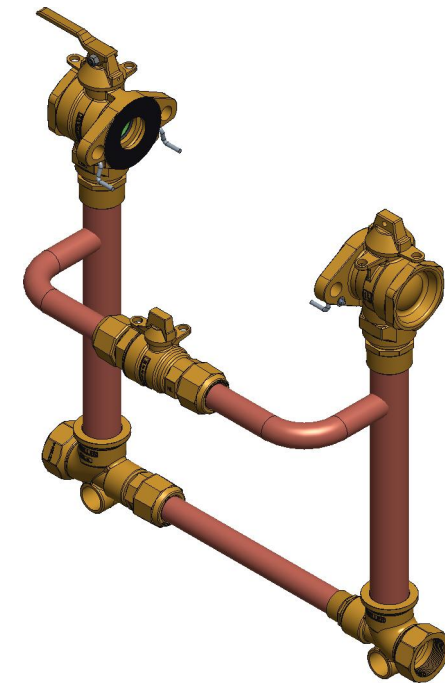
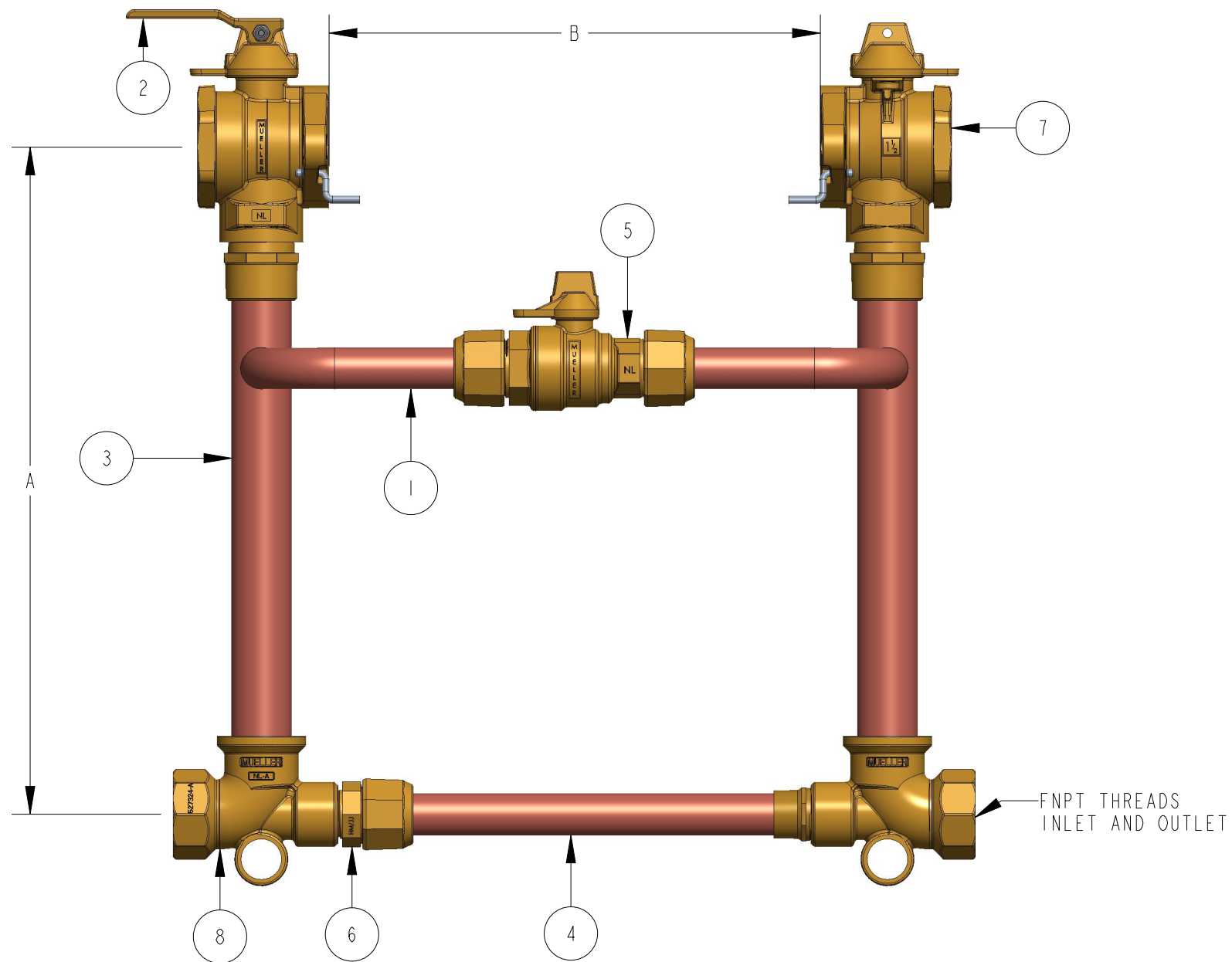


METER SIZE	1-1/2"	2"
A (MINIMUM)	18"	18"
B	13-1/4"	17-1/4"
HIGH BYPASS TUBING	509551	509552
TIE BAR SUB ASSEMBLY	282970E	681558E
INLINE BALL VALVE	330B25146N	330B25146N
FULL PORT BALL VALVE	330H15428N	330H15428N
TEE	551416E	546234E

ITEM NO	PART NUMBER	QTY	DESCRIPTION	MATERIAL
1		2	HIGH BYPASS TUBING	COPPER TUBING UNS C12200 050 TEMPER
2		1	HANDLE	LEAD FREE BRASS
3		2	RISER SUB ASSEMBLY	COPPER TUBING UNS C12200 H80 TEMPER
4		1	1" TIE BAR SUB ASSEMBLY	HARD COPPER TUBING UNS C12200 H80 TEMPER
5	330B25146N	1	1" INLINE BALL VALVE W/ 100 COMP. BOTH ENDS	LEAD FREE BRASS ALLOY ASTM B584 C89833/C87850
6	330H15428N	1	1" MIP X 1" CTS COMPRESSION TAILPIECE	LEAD FREE BRASS ALLOY ASTM B584 C89833/C87850
7	B2428601N	2	FULL PORT BALL VALVE	LEAD FREE BRASS ALLOY ASTM B584 C89833/C87850
8		2	TEE	LEAD FREE BRASS ALLOY ASTM B584 C89833/C87850



OPTION CODE 00:

- *LOCKWING BALL VALVE W/ LEVER HANDLE ON INLET
- *1" TOP BYPASS WITH LOCKING DEVICE

DR. BY	AOD	3/07/23	UNLESS OTHERWISE NOTED		THIRD ANGLE PROJECTION		C.B. NO.
CHKR			BREAK CAST CORNER(S)---				
ENGR			BREAK MACH CORNER(S)---		PURCH. FINISH		PATT. NO.
MGR			TOLERANCES UNLESS OTHERWISE NOTED		REF. NO. SCALE		
MFG			LINEAR ANGULAR		STK. NO. NONE		
TOOL			± ±				
FDRY							
MAT'L:							
			DESCR. COPPER METER SETTER LEAD FREE BRASS		NUMBER		
					B2423----00N		

B2423----00N