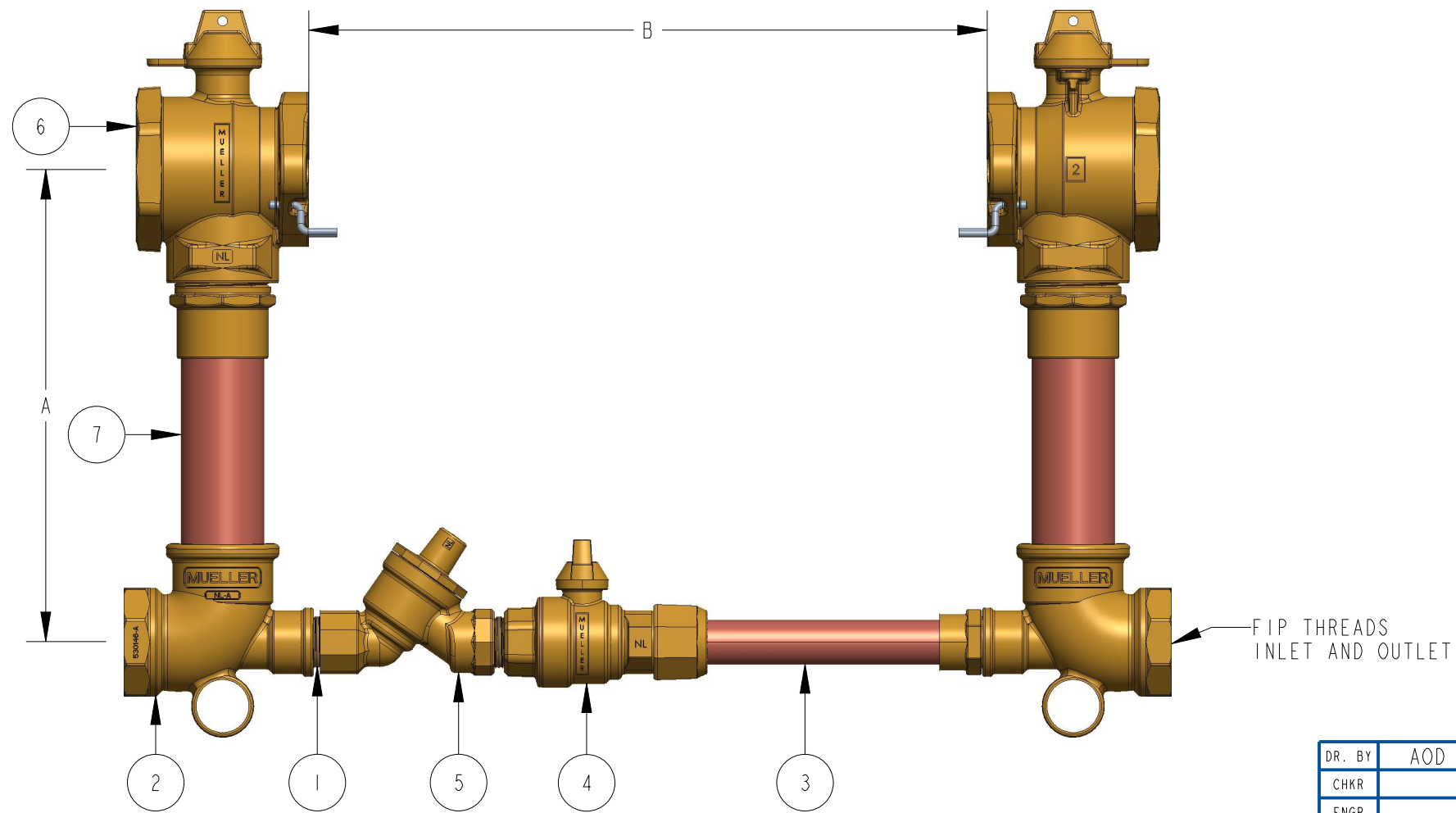


METER SIZE	1-1/2"	2"
A (MINIMUM)	12"	12"
B	13-1/4"	17-1/4"
COSED NIPPLE	047139	047139
TEE	549752E	530146E
BY-PASS SUB ASSEMBLY	682195	283236E
INLINE BALL VALVE	330B25170N	330B25170N
INLINE CHECK VALVE	330H14243N	330H14243N
FULL PORT BALL VALVE	500B242860IN	550B242860IN

ITEM NO	PART NUMBER	QTY	DESCRIPTION	MATERIAL
1	047139	2	1" X 1-1/2" CLOSED NIPPLE	RED BRASS ASTM B43 ALLOY C23000 O6I TEMPER ANNEALED
2		2	TEE (FIP X SOLDER X FIP)	LEAD FREE BRASS ALLOY ASTM B584 C89833/C87850
3		1	1" BY-PASS SUB ASSEMBLY	HARD COPPER TUBING UNS C12200 H80 TEMPER
4	330B25170N	1	1" INLINE BALL VALVE (110 X FIP)	LEAD FREE BRASS ALLOY ASTM B584 C89833/C87850
5	330H14243N	1	1" INLINE CHECK VALVE	LEAD FREE BRASS ALLOY ASTM B584 C89833/C87850
6	B242860IN	2	FULL PORT BALL VALVE	LEAD FREE BRASS ALLOY ASTM B584 C89833/C87850
7		2	RISER SUB ASSEMBLY	HARD COPPER TUBING UNS C12200 H80 TEMPER



OPTION CODE 110:

- *BALL VALVE ON INLET AND OUTLET
- *INSTALL CHECK VALVE ON BYPASS

DR. BY	AOD	UNLESS OTHERWISE NOTED	THIRD ANGLE PROJECTION	C.B. NO.
CHKR		BREAK CAST CORNER(S)---		
ENGR		BREAK MACH CORNER(S)---	PURCH.	PATT. NO.
MGR		TOLERANCES	REF. NO.	
MFG		UNLESS OTHERWISE NOTED	SCALE	
TOOL		LINEAR ±	ANGULAR ±	
FDRY			STK. NO.	
MAT'L:				
		DESCR. COPPER METER SETTER LEAD FREE BRASS	NUMBER	B2423----110N

B2423----110N