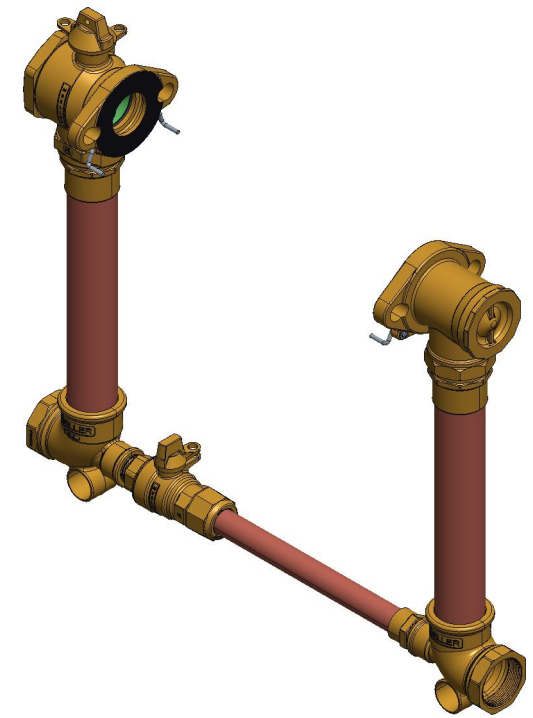
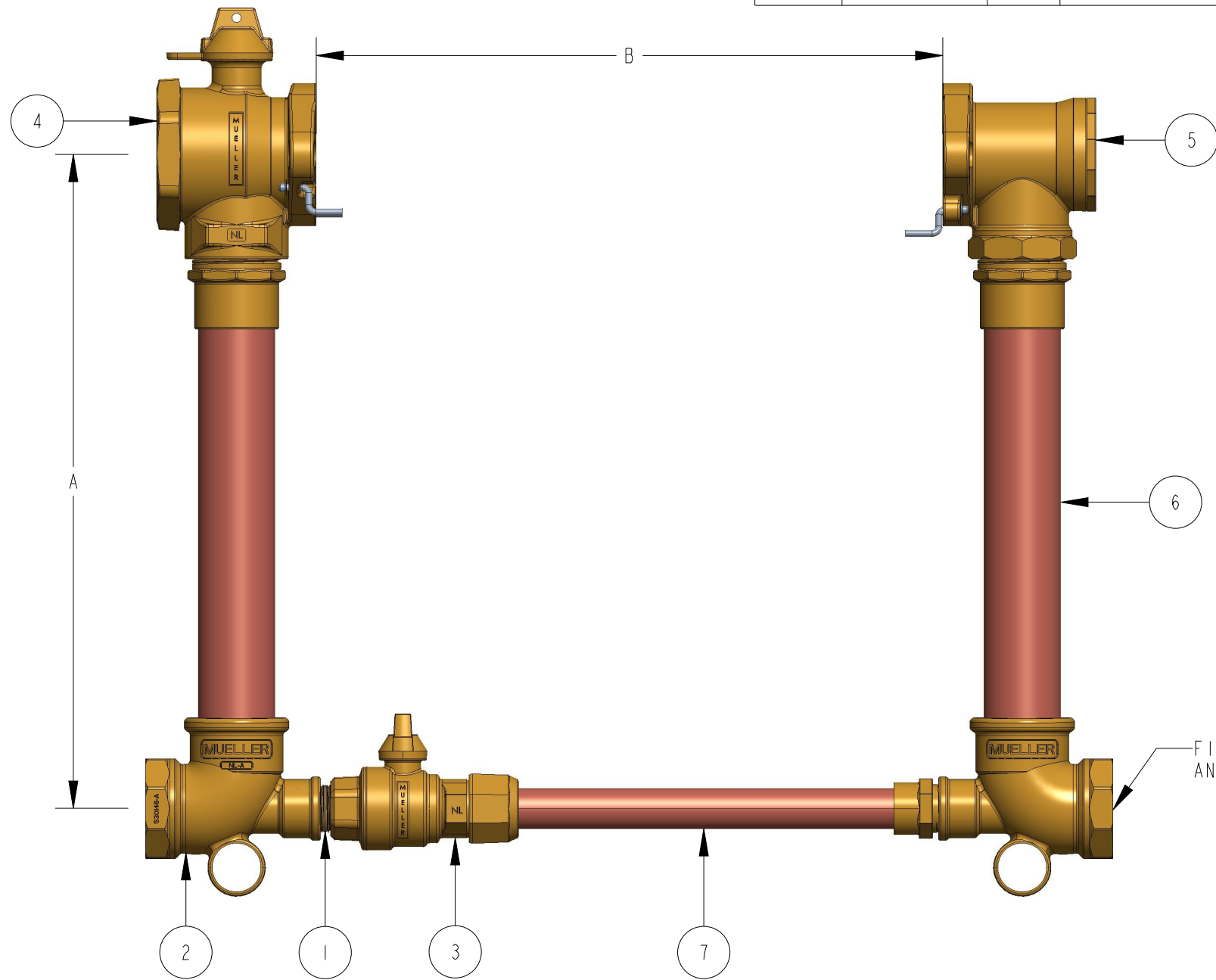


METER SIZE	1-1/2"	2"
A (MINIMUM)	12"	12"
B	13-1/4"	17-1/4"
TEE (FIP X SOLDER X FIP)	509704	530146E
FULL PORT BALL VALVE	500B242860IN	550B242860IN
DUAL CHECK VALVE	500HI4244N	550HI4244N
BY PASS SUB ASSEMBLY	283236E	682158E

ITEM NO	PART NUMBER	QTY	DESCRIPTION	MATERIAL
1	047139	1	1" X 1-1/2" CLOSED NIPPLE	RED BRASS ASTM B43 ALLOY C23000 O61 TEMPER ANNEALED
2		2	TEE (FIP X SOLDER X FIP)	LEAD FREE BRASS ALLOY ASTM B584 C89833/C87850
3	330B25170N	1	1" INLINE BALL VALVE (110 X FIP)	LEAD FREE BRASS ALLOY ASTM B584 C89833/C87850
4	B242860IN	1	FULL PORT BALL VALVE	LEAD FREE BRASS ALLOY ASTM B584 C89833/C87850
5	HI4244N	1	DUAL CHECK VALVE	LEAD FREE BRASS ALLOY ASTM B584 C89833/C87850
6		2	RISER SUB ASSEMBLY	HARD COPPER TUBING UNS C12200 H80 TEMPER
7		1	BY PASS SUB ASSEMBLY	HARD COPPER TUBING UNS C12200 H80 TEMPER



OPTION CODE 01:

\*NO CHECK VALVE ON BY PASS

B2423--2-01N

DR. BY	AOD	3/09/23	UNLESS OTHERWISE NOTED	THIRD ANGLE PROJECTION	C.B. NO.
CHKR			BREAK CAST CORNER(S)---		
ENGR			BREAK MACH CORNER(S)---	PURCH.	FINISH
MGR			TOLERANCES	REF. NO.	PATT. NO.
MFG			UNLESS OTHERWISE NOTED	STK. NO.	
TOOL			LINEAR	ANGULAR	
FDRY			±	±	
MAT'L:					
			DESCR.	NUMBER	
			COPPER METER SETTER LEAD FREE BRASS	B2423--2-01N	