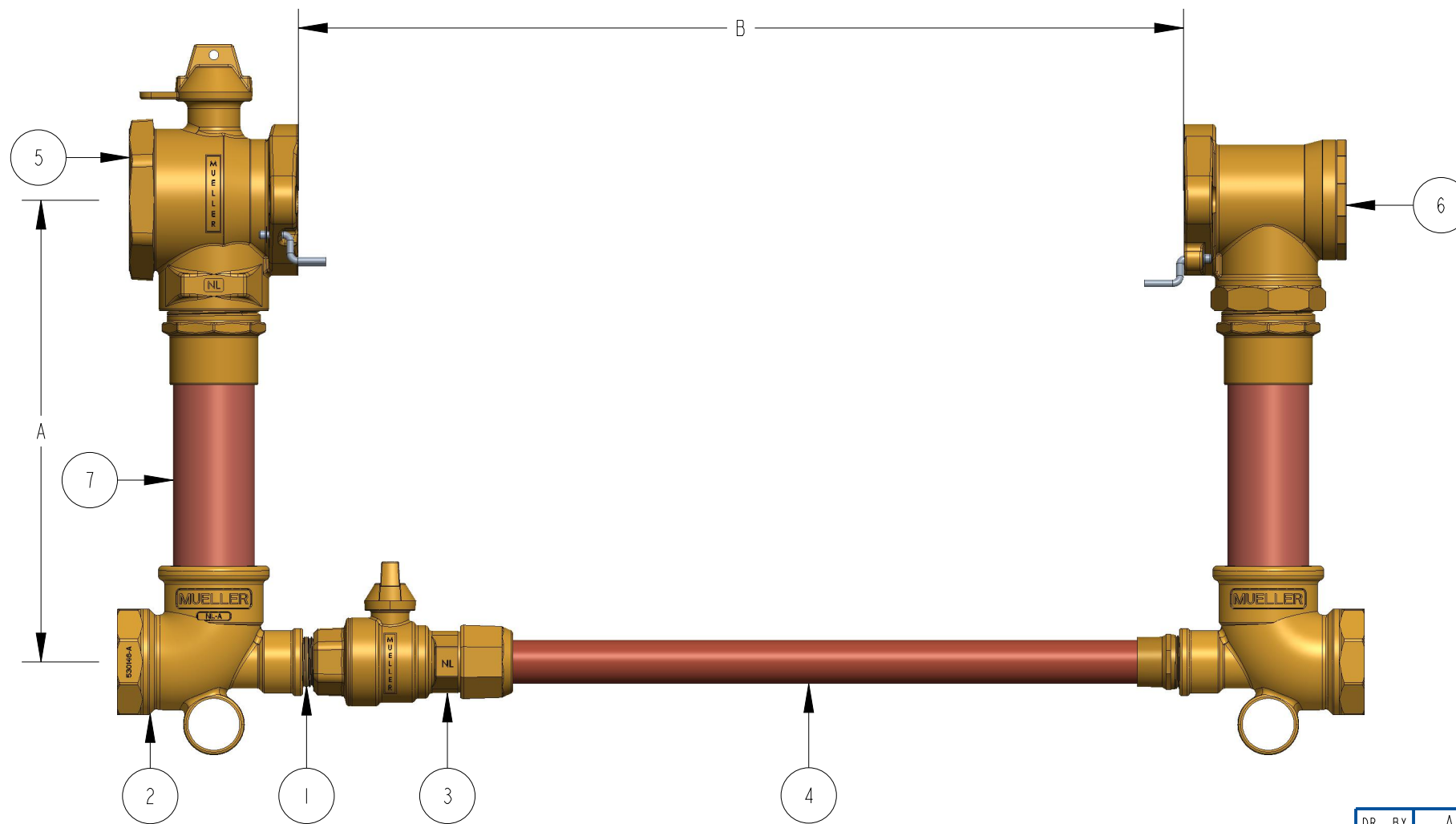


METER SIZE	1-1/2"	2"
A (MINIMUM)	12"	12"
B	23"	23"
TEE (FIP X SOLDER X FIP)	509704	530146E
FULL PORT BALL VALVE	500B2428601N	550B2428601N
DUAL CHECK VALVE	500HI4244N	550HI4244N

ITEM NO	PART NUMBER	QTY	DESCRIPTION	MATERIAL
1	047139	1	1" X 1-1/2" CLOSED NIPPLE	RED BRASS ASTM B43 ALLOY C23000 O61 TEMPER ANNEALED
2		2	TEE (FIP X SOLDER X FIP)	LEAD FREE BRASS ALLOY ASTM B584 C89833/C87850
3	330B25170N	1	1" INLINE BALL VALVE (110 X FIP)	LEAD FREE BRASS ALLOY ASTM B584 C89833/C87850
4	549970E	1	BY PASS SUB ASSEMBLY	HARD COPPER TUBING UNS C12200 H80 TEMPER
5		1	FULL PORT BALL VALVE	LEAD FREE BRASS ALLOY ASTM B584 C89833/C87850
6		1	DUAL CHECK VALVE	LEAD FREE BRASS ALLOY ASTM B584 C89833/C87850
7		2	RISER SUB ASSEMBLY	HARD COPPER TUBING UNS C12200 H80 TEMPER



OPTION CODE 106:

- *NO CHECK VALVE ON BY PASS
- *23" LAY LENGTH

B2423-2-106N

DR. BY	AOD	3/09/23	UNLESS OTHERWISE NOTED	THIRD ANGLE PROJECTION	C.B. NO.
CHKR			BREAK CAST CORNER(S)---		
ENGR			BREAK MACH CORNER(S)---	PURCH.	FINISH
MGR			TOLERANCES	REF. NO.	PATT. NO.
MFG			UNLESS OTHERWISE NOTED	STK. NO.	
TOOL			LINEAR	ANGULAR	SCALE
FDRY			±	±	NONE
MAT'L:					
		DESCR.	COPPER METER SETTER LEAD FREE BRASS		NUMBER
				B2423-2-106N	