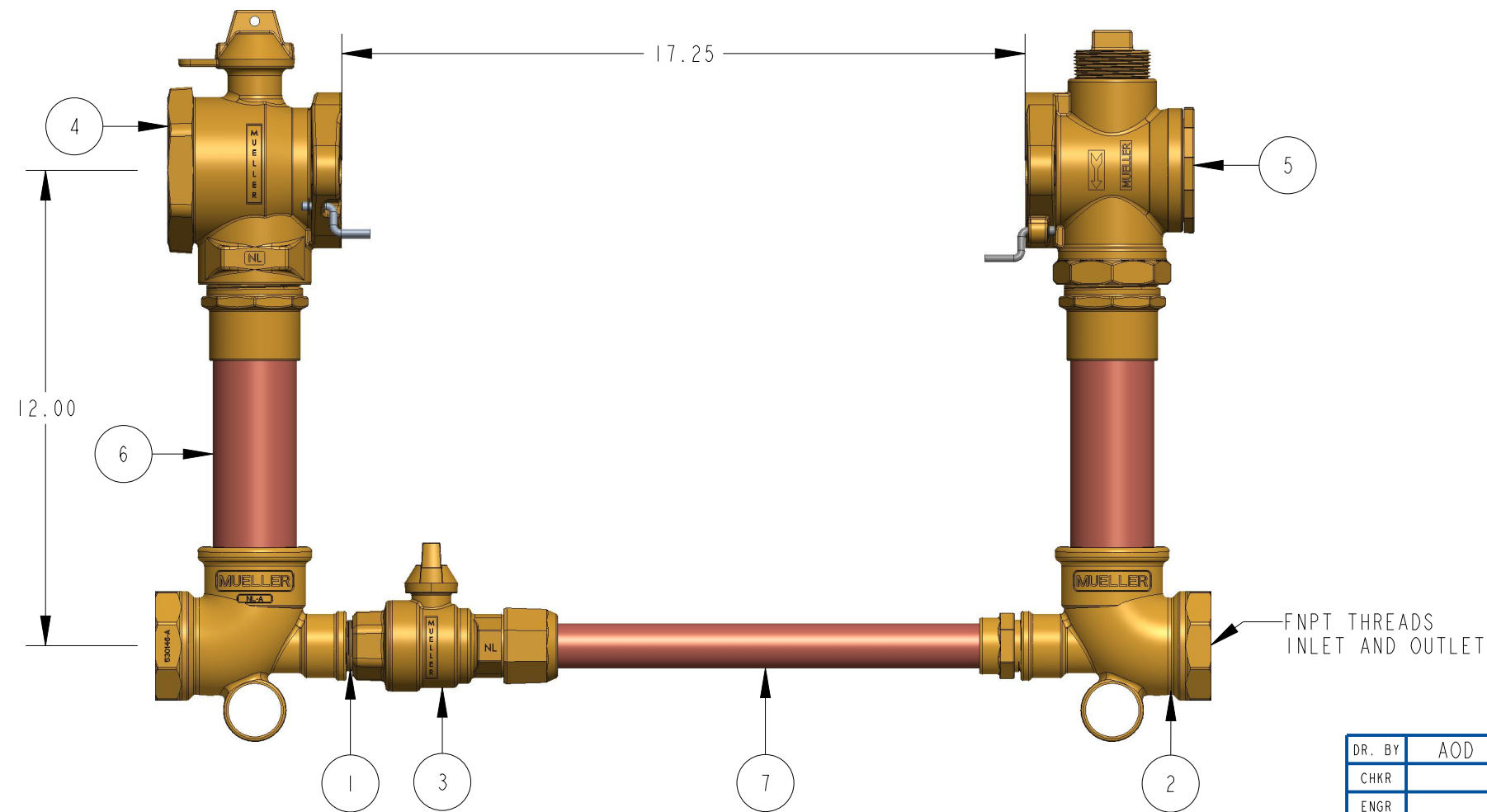


METER SIZE	1-1/2"	2"
A (MINIMUM)	12"	12"
B	13-1/4"	17-1/4"
CLOSED NIPPLE	047139	047139
TEE (FIP X SOLDER X FIP)	509704E	530146E
INLINE BALL VALVE (110 X FIP)	330B25170N	330B25170N
FULL PORT BALL VALVE	500B242860IN	550B242860IN
DUAL CHECK VALVE WITH TEST PORT	500HI4244TPN	550HI4244TPN
BY-PASS SUB ASSEMBLY	283236E	682158E

ITEM NO	PART NUMBER	QTY	DESCRIPTION	MATERIAL
1		1	CLOSED NIPPLE	RED BRASS ASTM B43 ALLOY C23000 O61 TEMPER ANNEALED
2		2	TEE (FIP X SOLDER X FIP)	LEAD FREE BRASS ALLOY ASTM B584 C89833/C87850
3	B25170N	1	INLINE BALL VALVE (110 X FIP)	LEAD FREE BRASS ALLOY ASTM B584 C89833/C87850
4	B242860IN	1	FULL PORT BALL VALVE	LEAD FREE BRASS ALLOY ASTM B584 C89833/C87850
5	HI4244TPN	1	DUAL CHECK VALVE WITH TEST PORT	LEAD FREE BRASS ALLOY ASTM B584 C89833/C87850
6		2	RISER SUB ASSEMBLY	HARD COPPER TUBING UNS C12200 H80 TEMPER
7		1	BY-PASS SUB ASSEMBLY	HARD COPPER TUBING UNS C12200 H80 TEMPER



OPTION CODE: 01

\* LESS CHECK VALVE ON BY-PASS

DR. BY	AOD	2/24/23	UNLESS OTHERWISE NOTED	THIRD ANGLE PROJECTION	C.B. NO.
CHKR			BREAK CAST CORNER(S)---		
ENGR			BREAK MACH CORNER(S)---	PURCH.	FINISH
MGR			TOLERANCES	REF. NO.	PATT. NO.
MFG			UNLESS OTHERWISE NOTED	STK. NO.	
TOOL			LINEAR	ANGULAR	
FDRY			±	±	
MAT'L:					
			DESCR.	NUMBER	
			2" COPPER METER SETTER LOW LEAD BRASS	B2423--2P01N	

B2423--2P01N