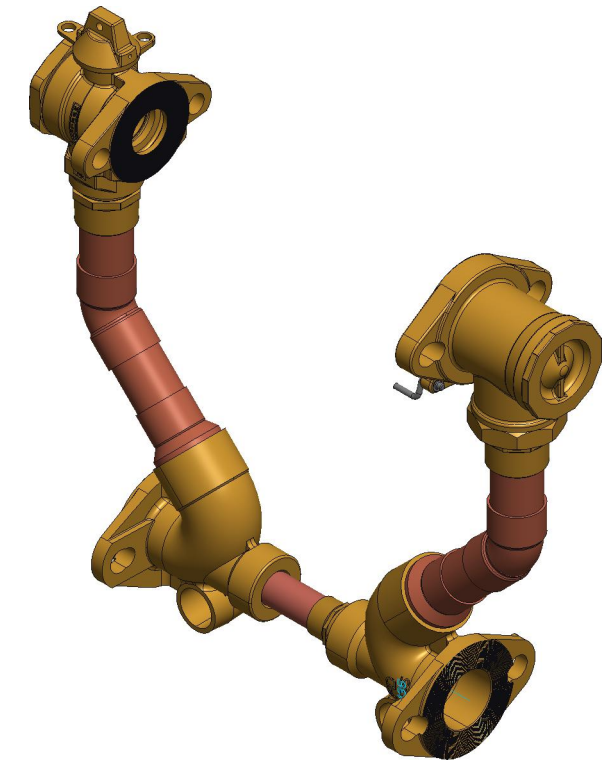
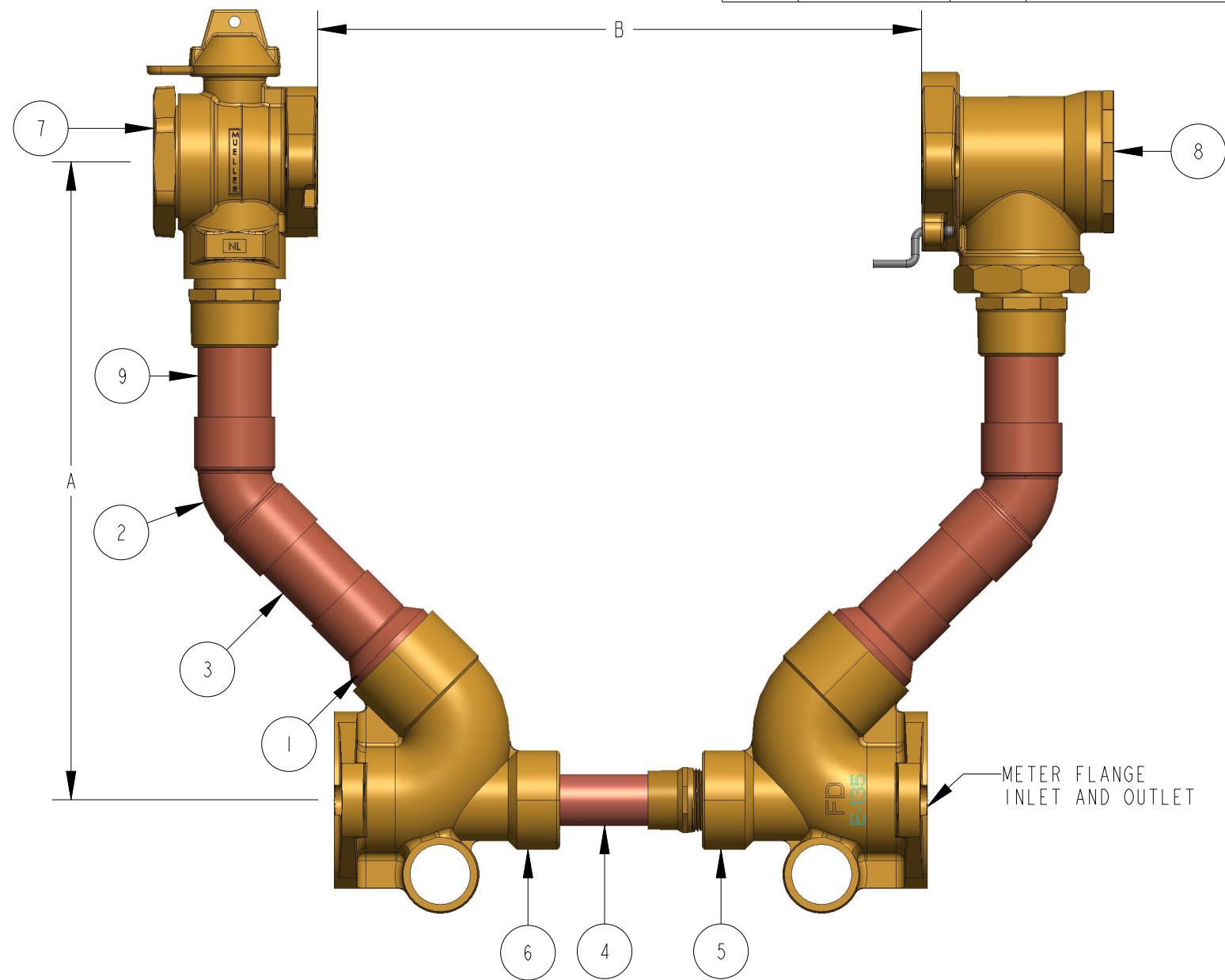


METER SIZE	1-1/2"	2"
A (MINIMUM)	14"	14"
B	13-1/4"	17-1/4"
COPPER 45 DEGREE ELBOW	311850	197982
RELOCATOR ELBOW	311763E	311763E
RELOCATOR ELBOW	311764E	311764E
FULL PORT BALL VALVE	500B242863N	550B242863N
METER COUPLING	500HI4244N	550HI4244N
TIE BAR SUB ASSEMBLY	682023	682022E

ITEM NO	PART NUMBER	QTY	DESCRIPTION	MATERIAL
1	311849	2	REDUCING FITTING--ON 1-1/2" SIZE ONLY	COPPER ALLOY ASTM B-75 C12200
2		2	45 DEGREE ELBOW	COPPER ALLOY ASTM B-75 C12200
3		1	COPPER TUBING	HARD COPPER TUBING UNS C12200 H80 TEMPER
4		1	TIE BAR ASSEMBLY	HARD COPPER TUBING UNS C12200 H80 TEMPER
5		1	RELOCATOR ELBOW	LEAD FREE BRASS ALLOY ASTM B584 C89833/C87850
6		1	RELOCATOR ELBOW	LEAD FREE BRASS ALLOY ASTM B584 C89833/C87850
7	B242863N	1	360 DEGREE BALL VALVE	LEAD FREE BRASS ALLOY ASTM B584 C89833/C87850
8	HI4244N	1	DUAL CHECK VALVE	LEAD FREE BRASS ALLOY ASTM B584 C89833/C87850
9		2	RISER SUB ASSEMBLY	HARD COPPER TUBING UNS C12200 H80 TEMPER



B2424--5---N

DR. BY	AOD	2/24/23	UNLESS OTHERWISE NOTED	THIRD ANGLE PROJECTION	C.B. NO.
CHKR			BREAK CAST CORNER(S)---		
ENGR			BREAK MACH CORNER(S)---	PURCH.	PATT. NO.
MGR			TOLERANCES	FINISH	
MFG			UNLESS OTHERWISE NOTED	REF. NO.	SCALE
TOOL			LINEAR	±	ANGULAR
FDRY			±	±	STK. NO.
MAT'L:					
<b>MUELLER</b>			DESCR.	NUMBER	
			COPPER METER SETTER LEAD FREE BRASS	B2424--5---N	