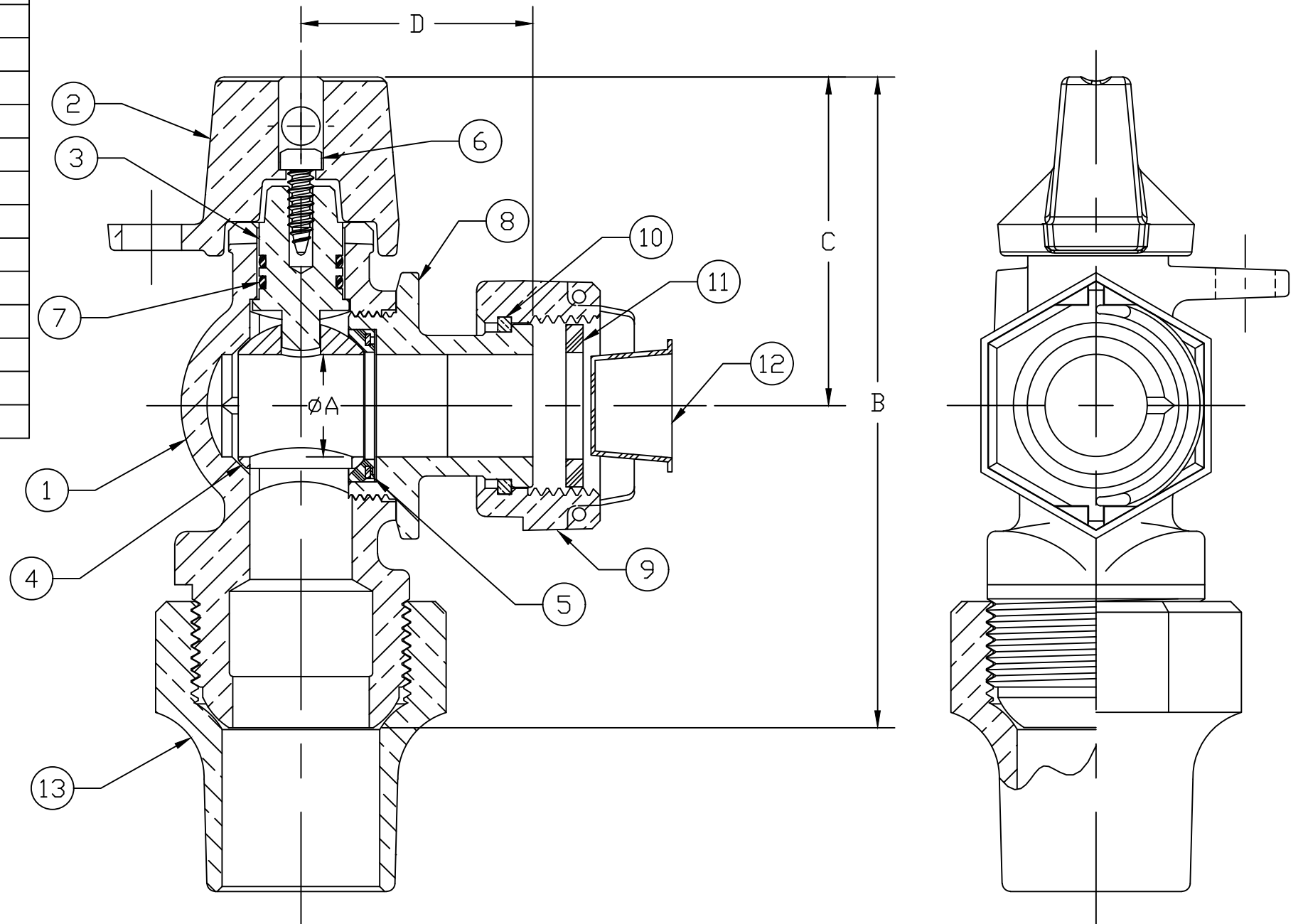


ITEM	REQ'D	DESCRIPTION	MATERIAL
1	1	BODY	CAST NO LEAD BRASS ALLOY
2	1	CAP	CAST BRASS ASTM B62 ALLOY C83600
3	1	STEM	NO LEAD BRASS ALLOY
4	1	BALL	NO LEAD BRASS ALLOY
5	2	GASKET	EPDM D2000
6	1	SCREW	AISI 302 STAINLESS STEEL
7	2	O-RING	EPDM D2000
8	1	END PIECE	CAST NO LEAD BRASS ALLOY
9	1	SADDLE NUT	CAST BRASS ASTM B62 ALLOY C83600
10	1	SNAP RING	COPPER ALLOY CDA521
11	1	RUBBER GASKET	EPDM D2000
12	1	CAP PLUG	PLASTIC
13	1	COPPER TUBE NUT	CAST BRASS ASTM B62 ALLOY C83600



SIZE	ØA	B	C	D
5/8" x 3/4" R	.62	4.33	2.35	1.69
5/8" x 3/4"	.75	4.33	2.35	1.69
5/8" x 3/4" x 3/4" R	.62	4.33	2.35	1.69
5/8" x 3/4" x 3/4"	.75	4.33	2.35	1.69
5/8" x 3/4" x 1"	.75	4.71	2.35	1.69
1" R	.75	5.00	2.64	1.95
1"	1.00	5.00	2.64	1.95

ALL WETTED PARTS ARE NO LEAD BRASS ALLOY

FILEPATH: PROD-ENG\MUELLER\APPROVED\B24255N

DRFTR	RWB	12/4/07	<b>MUELLER</b>	UNLESS OTHERWISE NOTED THIRD ANGLE PROJECTION SURFACE PREPARATION: BREAK CORNER(S) ---- .000 SURFACE FINISH -- 000 RMS TOLERANCE(S): LINEAR ----- ± .000 ANGULAR ----- ± 0°00'
CHKR				
ENGR				
MGR				
BY	DATE		REF. No.	SCALE
				NONE
STK No:				
MAT'L:				
DESCR.	ADD REDUCE PORT 10/16/13 RWB		DWG NUMBER	
REV	ECR	DESCRIPTION	DATE	BY
PER EST NO: DXXXX EST FIN WT = 0.0000 lbs				
ANGLE METER VALVE NO LEAD BRASS			B24255N	

DWG NUMBER  
B24255N

MRKTG

TITLE TO AND OWNERSHIP OF THIS ENGINEERING  
DATA REMAINS IN Mueller Co. NO USE IS TO BE  
MADE OF THIS DATA EXCEPT AS SPECIFICALLY  
AUTHORIZED BY Mueller Co. ASSENT ON THE PART  
OF THE RECIPIENT TO THESE CONDITIONS IS PRESUMED