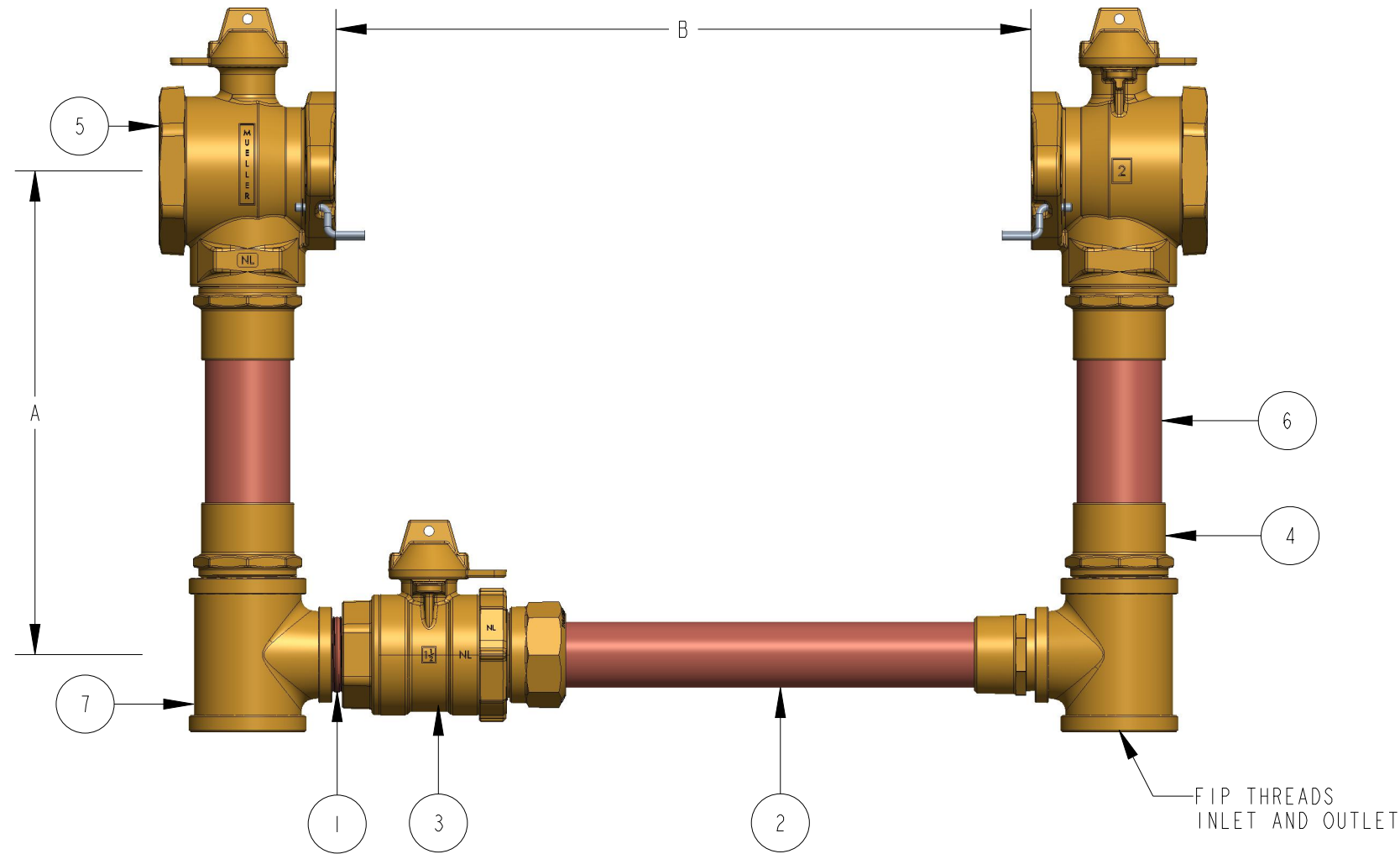


|                      |              |              |
|----------------------|--------------|--------------|
| METER SIZE           | 1-1/2"       | 2"           |
| A (MINIMUM)          | 12"          | 12"          |
| B                    | 13-1/4"      | 17-1/4"      |
| BYPASS SUB ASSEMBLY  | 283236E      | 283237E      |
| SPUD                 | 508453E      | 508441E      |
| FULL PORT BALL VALVE | 500B2428601N | 550B2428601N |
| FIP X FIP TEE        | 790187E      | 790159E      |

| ITEM NO | PART NUMBER | QTY | DESCRIPTION              | MATERIAL                                      |
|---------|-------------|-----|--------------------------|---|
| 1       | 047141      | 1   | 1-1/2" CLOSED NIPPLE     | RED BRASS ASTM B43 ALLOY C23000 HARD TEMPER   |
| 2       |             | 1   | BY-PASS SUB ASSEMBLY     | HARD COPPER TUBING UNS C12200 H80 TEMPER      |
| 3       | 500B25170N  | 1   | 1-1/2" INLINE BALL VALVE | LEAD FREE BRASS ALLOY ASTM B584 C89833/C87850 |
| 4       |             | 2   | SPUD                     | LEAD FREE BRASS ALLOY ASTM B584 C89833/C87850 |
| 5       | B2428601N   | 2   | FULL PORT BALL VALVE     | LEAD FREE BRASS ALLOY ASTM B584 C89833/C87850 |
| 6       |             | 2   | RISER SUB ASSEMBLY       | COPPER TUBING UNS C12200 H80 TEMPER           |
| 7       |             | 2   | FIP X FIP TEE            | CAST BRONZE ASTM B584 ALLOY C89833            |



B2427-----N

|        |     |         |   |         |                        |               |
|--------|-----|---------|---|---------|------------------------|---------------|
| DR. BY | AOD | 3/02/23 | UNLESS OTHERWISE NOTED                        |         | THIRD ANGLE PROJECTION | C.B. NO.      |
| CHKR   |     |         | BREAK CAST CORNER(S)---                       |         |                        | PATT. NO.     |
| ENGR   |     |         | BREAK MACH CORNER(S)---                       |         |                        |               |
| MGR    |     |         | TOLERANCES                                    |         | REF. NO.               | SCALE<br>NONE |
| MFG    |     |         | UNLESS OTHERWISE NOTED                        |         | STK. NO.               |               |
| TOOL   |     |         | LINEAR  | ANGULAR |                        |               |
| FDRY   |     |         | ±   | ±       |                        |               |
| MAT'L: |     |         |   |         |                        |               |
|        |     |         | DESCR. COPPER METER SETTER<br>LEAD FREE BRASS |         | NUMBER<br>B2427-----N  |               |
|        |     |         |   |         |                        |               |