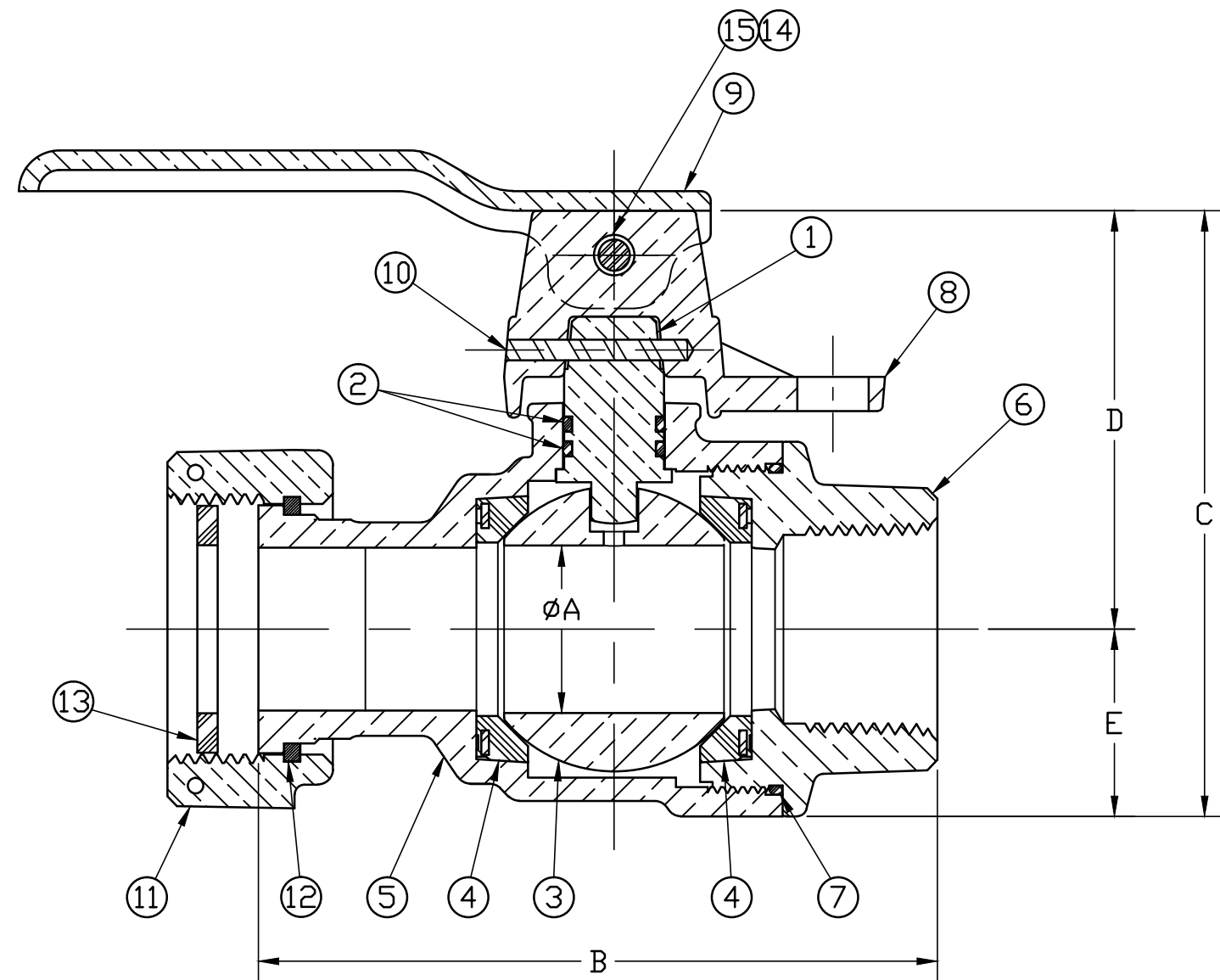


No.	DESCRIPTION	MATERIAL
1	STEM	LOW LEAD BRASS ALLOY
2	O-RING	EPDM D2000
3	BALL	LOW LEAD BRASS ALLOY
4	GASKET - SEAL	NITRILE D2000
5	BODY	CAST LOW LEAD BRASS ALLOY
6	END PIECE	CAST LOW LEAD BRASS ALLOY
7	O-RING	EPDM D2000
8	CAP	CAST BRASS ASTM B62 ALLOY C83600
9	HANDLE	CAST BRASS ASTM B62 ALLOY C83600
10	SOLID PIN	AISI 303 STAINLESS STEEL
11	SADDLE NUT	CAST BRASS ASTM B62 ALLOY C83600
12	SNAP RING	COPPER ALLOY CDA521
13	RUBBER GASKET	NITRILE D2000
14	MACH SCREW	AISI 304 STAINLESS STEEL
15	HEX LOCKNUT	AISI 18-8 STAINLESS STEEL



SIZE	A	B	C	D	E
5/8" x 3/4" x 1"	.75	3.44	3.15	2.31	.84
3/4"	.75	3.21	3.15	2.31	.84
1"	1.00	4.17	3.72	2.57	1.15

ALL WETTED PARTS ARE LOW LEAD BRASS ALLOY

FILEPATH: PROD-ENG\MUELLER\ASYSUBMITTALS\B24351411N

DWG NUMBER
B24351411N
44² -MRKTNG

TITLE TO AND OWNERSHIP OF THIS ENGINEERING DATA REMAINS IN Mueller Co. NO USE IS TO BE MADE OF THIS DATA EXCEPT AS SPECIFICALLY AUTHORIZED BY Mueller Co. ASSENT ON THE PART OF THE RECIPIENT TO THESE CONDITIONS IS PRESUMED

DRFTR	RWB	1/13/14	Mueller Co.		
CHKR					
ENGR					
MGR					
UNLESS OTHERWISE NOTED			THIRD ANGLE PROJECTION		
SURFACE PREPARATION:					
BREAK CORNER(S) ---- .000					
SURFACE FINISH -- XX RMS			REF. No.	SCALE	
TOLERANCE(S):			FULL		
LINEAR ----- ± .000					
ANGULAR ----- ± 0°00'					
BY DATE					
STK No:					
MAT'L:					
DESCR.			DWG NUMBER		
1" INLINE BALL METER VALVE			B24351411N		
LLB (PLAIN NUT MTR x FIP)					
REV	ECR	DESCRIPTION	DATE	BY	CHKR
PER EST NO: DXXXX EST FIN WT = 0.0000 lbs					