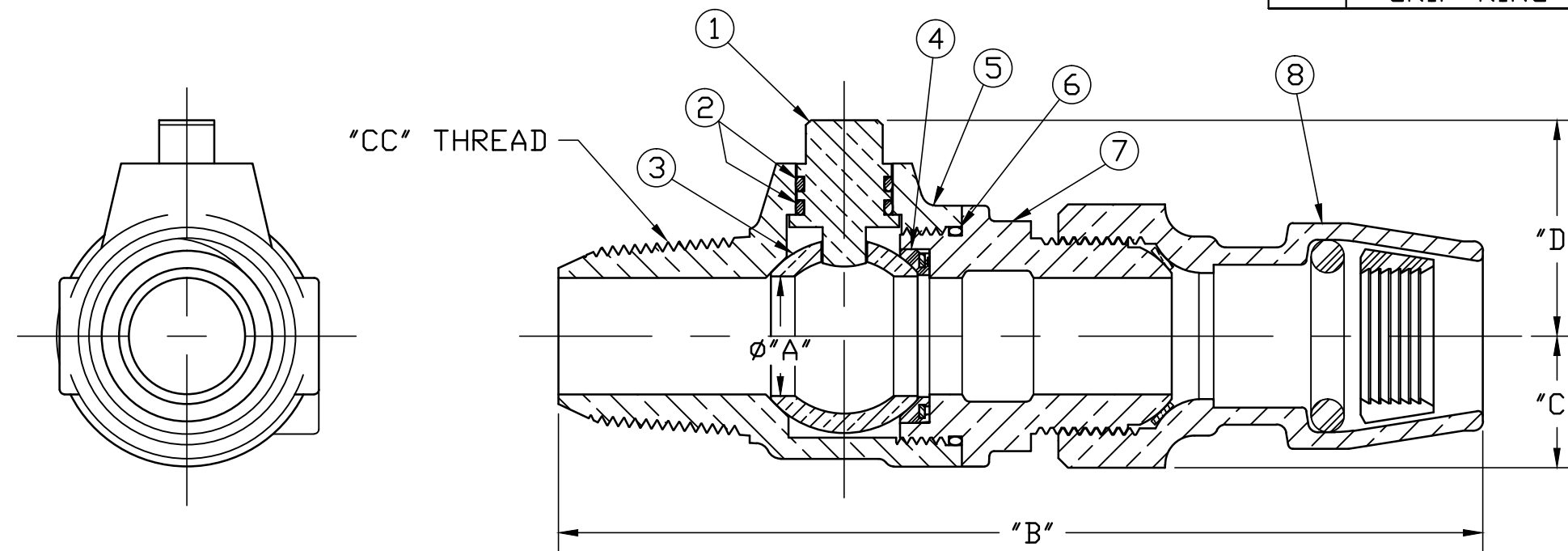


No.	DESCRIPTION	MATERIAL
1	STEM	LOW LEAD BRASS ALLOY
2	O-RING	EPDM D2000
3	BALL	LOW LEAD BRASS ALLOY
4	GASKET - SEAL	NITRILE D2000
5	BODY	CAST LOW LEAD BRASS ALLOY
6	O-RING	EPDM D2000
7	END PIECE	CAST LOW LEAD BRASS ALLOY
8	CORP COUPLING	
	SPUD	CAST LOW LEAD BRASS ALLOY
	COPPER GASKET	COPPER ASTM B152 ALLOY C11000
	O-RING	EP ASTM D2000 RUBBER
	GRIP RING	CELCON M90 (RED) CF2001



SIZE	ØA	B	C	D
3/4"	.750	5.953	.848	1.390
1"	1.000	7.100	1.150	1.591

ALL WETTED PARTS ARE LOW LEAD BRASS ALLOY

FILEPATH: PROD-ENG\MUELLER\ASYSUBMITTALS\B25006N

						DRFTR	RWB	3/21/18	Mueller Co.		
						CHKR					
						ENGR					
						MGR					
									UNLESS OTHERWISE NOTED	THIRD ANGLE PROJECTION	
									SURFACE PREPARATION:		
									BREAK CORNER(S) ---- .000		
									SURFACE FINISH -- XX RMS	REF. No.	SCALE
									TOLERANCE(S):		NONE
									LINEAR ----- ± .000		
									ANGULAR ----- ± 0°00'		
									STK No:		
									MAT'L:		
									DESCR.	LLB BALL CORPORATION VALVE (CC x INSTA-TITE)	
										DWG NUMBER	
										B25006N	
									PER EST NO: DXXXX	EST FIN WT = 0.0000 lbs	

DWG NUMBER
B25006N
442-MRKTG

TITLE TO AND OWNERSHIP OF THIS ENGINEERING DATA REMAINS IN Mueller Co. NO USE IS TO BE MADE OF THIS DATA EXCEPT AS SPECIFICALLY AUTHORIZED BY Mueller Co. ASSENT ON THE PART OF THE RECIPIENT TO THESE CONDITIONS IS PRESUMED.