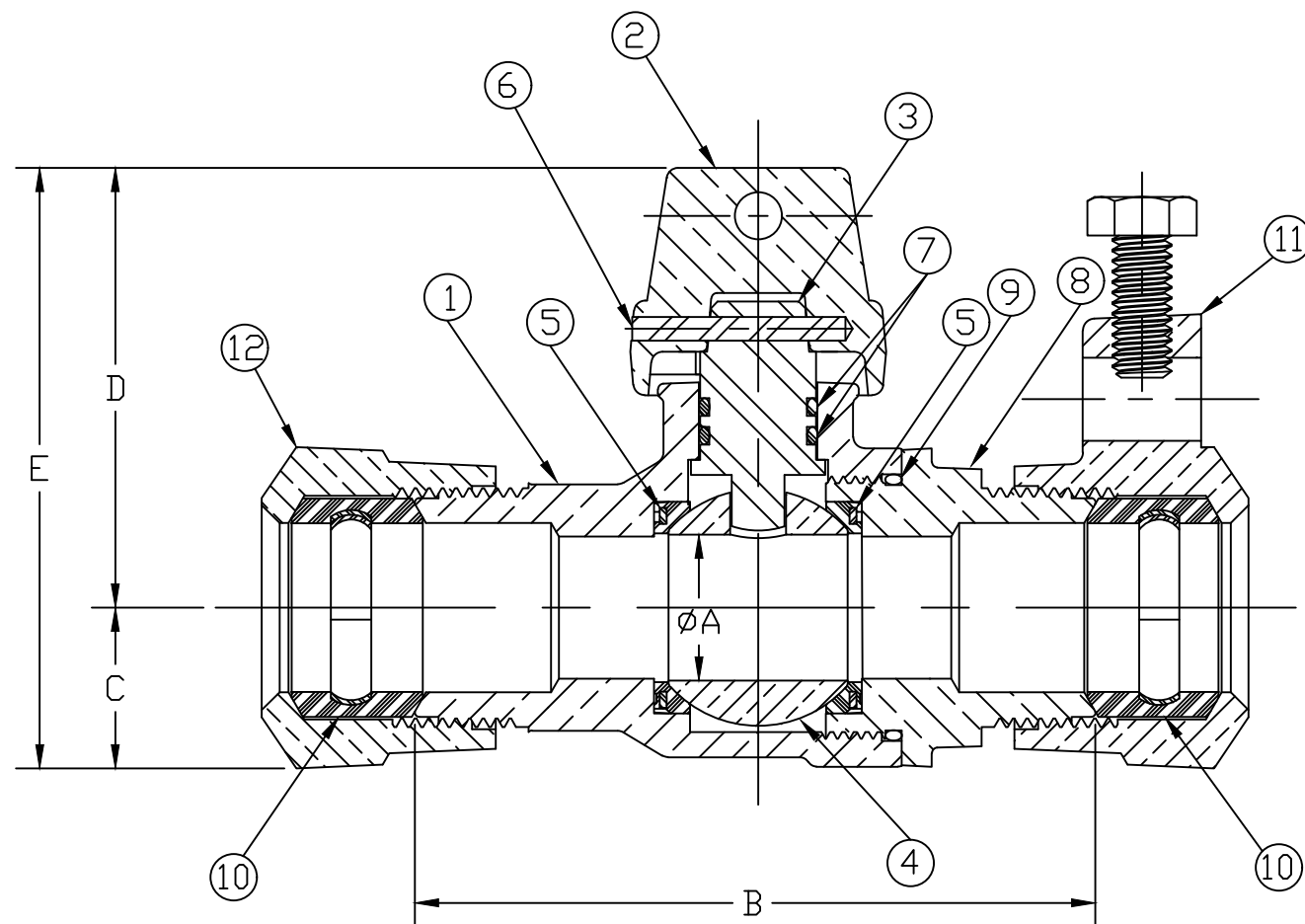


No.	DESCRIPTION	MATERIAL DESCRIPTION
1	BODY	CAST NO LEAD BRASS ALLOY
2	CAP	CAST BRASS ASTM B62 ALLOY C83600
3	STEM	NO LEAD BRASS ALLOY
4	BALL	NO LEAD BRASS ALLOY
5	GASKET	ASTM D2000 EPDM
6	SOLID PIN	AISI 303 STAINLESS STEEL
7	O-RING	ASTM D2000 EPDM
8	END PIECE	CAST NO LEAD BRASS ALLOY
9	O-RING	ASTM D2000 EPDM
10	CTS GASKET SUB	ASTM D2000(SBR)&410 STAINLESS STEEL
11	THAW NUT SUB	CAST BRASS ASTM B62 ALLOY C83600
12	CONNX NUT	CAST BRASS ASTM B62 ALLOY C83600

SIZE	ØA	B	C	D	E
3/4"	.75	3.59	.84	2.12	2.96
1"	1.00	5.03	1.15	2.32	3.47
1 1/2"	1.50	5.06	1.50	3.37	4.87
2"	2.00	5.52	1.82	3.92	5.74



ALL WETTED PARTS ARE NO LEAD BRASS ALLOY

FILEPATH: PROD-ENG\MUELLER\ASYSUBMITTALS\B2520907N

						DRFTR	RWB	6/12/13	<b>MUELLER</b>	UNLESS OTHERWISE NOTED THIRD ANGLE PROJECTION SURFACE PREPARATION: BREAK CORNER(S) ----- .000 SURFACE FINISH --XXX RMS TOLERANCE(S): LINEAR ----- ± .000 ANGULAR ----- ± 0°00'	REF. No.	SCALE FULL				
						CHKR										
						ENGR										
						MGR										
							BY	DATE	STK No:							
									MAT'L:							
									DESCR.	INLINE BALL CURB NLB VALVE (110CTS × 110CTS THAW NUT)		DWG NUMBER B2520907N				
									REV	ECR	DESCRIPTION	DATE	BY	CHKR	PER EST NO: DXXXX	EST FIN WT = 0.0000 lbs

DWG NUMBER  
B2520907N  
442-MRKTG

TITLE TO AND OWNERSHIP OF THIS ENGINEERING  
DATA REMAINS IN Mueller Co. NO USE IS TO BE  
MADE OF THIS DATA EXCEPT AS SPECIFICALLY  
AUTHORIZED BY Mueller Co. ASSENT ON THE PART  
OF THE RECIPIENT TO THESE CONDITIONS IS PRESUMED