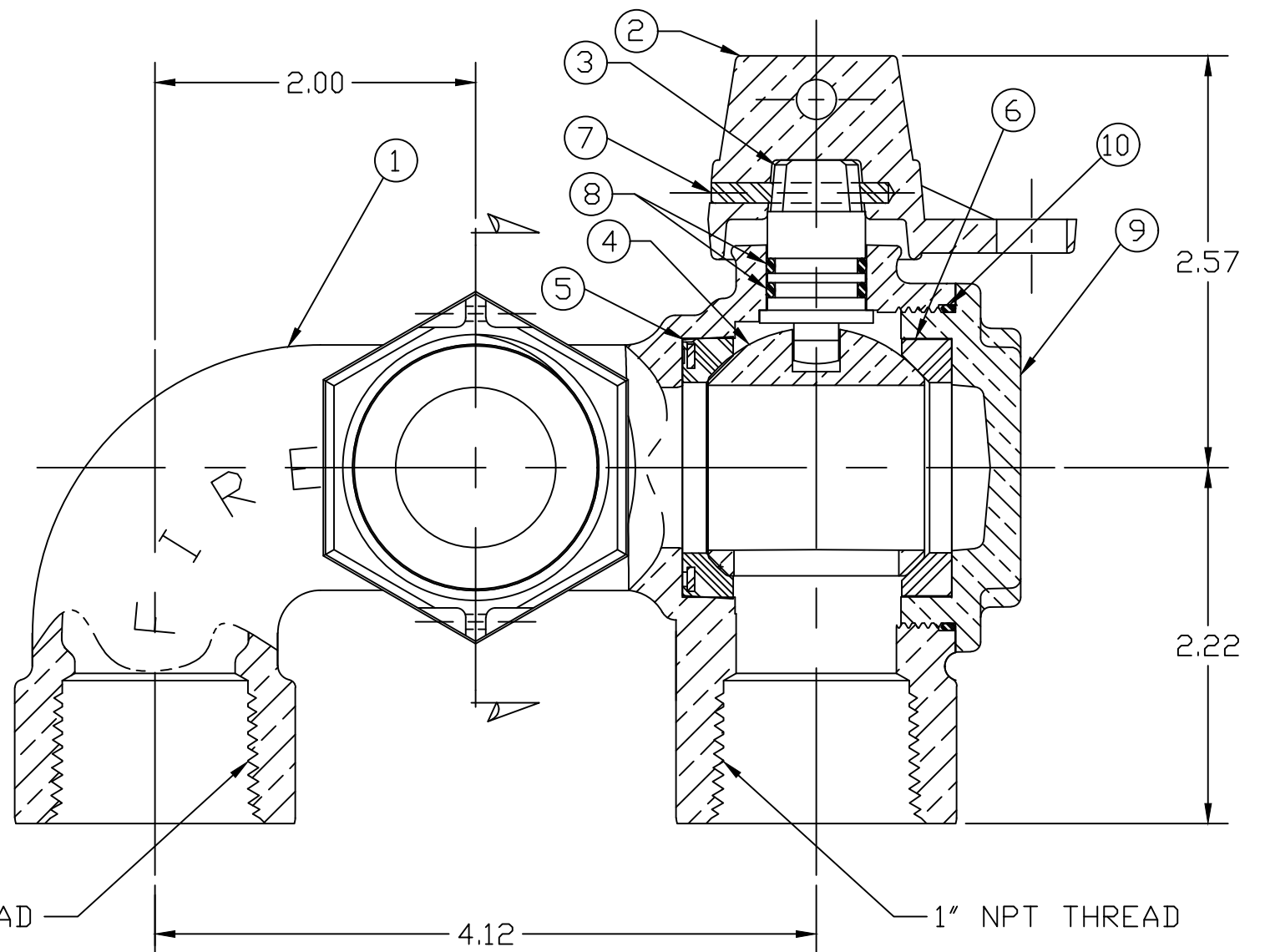
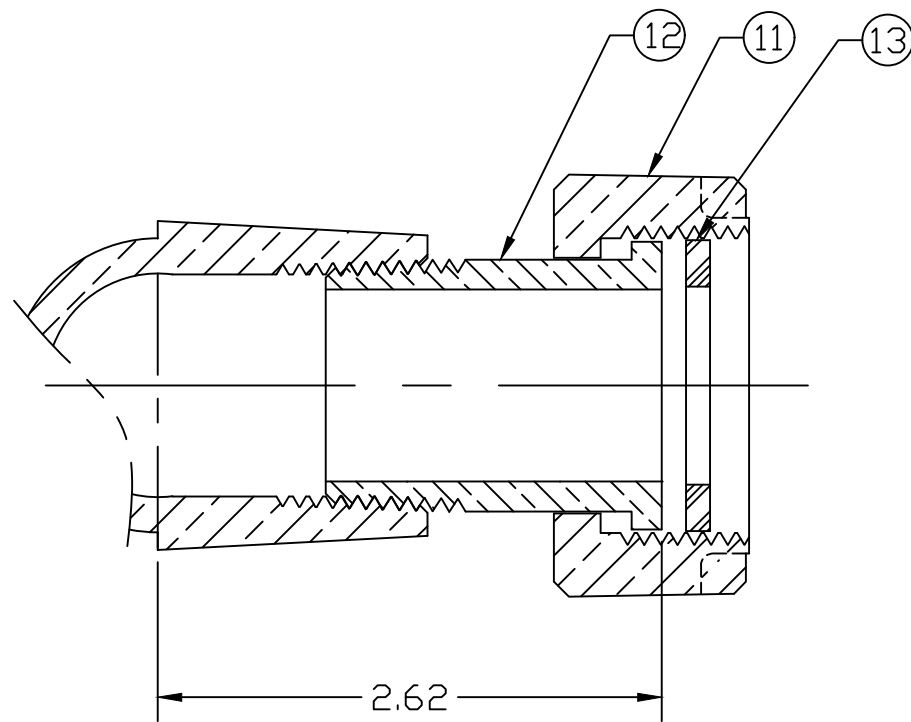


No.	DESCRIPTION	MATERIAL DESCRIPTION
1	BODY	LEAD FREE BRASS ALLOY ASTM B584
2	CAP	CAST BRASS ALLOY ASTM B584
3	STEM	LEAD FREE BRASS ALLOY ASTM B584/B371
4	BALL	LEAD FREE BRASS ALLOY ASTM B584
5	SEAT (RUBBER)	EPDM D2000
6	SEAT (DELTRIN)	(WHITE) DELTRIN
7	SOLID PIN	AISI 303 STAINLESS STEEL
8	O-RING	EPDM D2000
9	END CAP	LEAD FREE BRASS ALLOY ASTM B584
10	O-RING	EPDM D2000
11	PLAIN NUT	CAST BRASS ALLOY ASTM B584
12	TAILPIECE	LEAD FREE BRASS ALLOY ASTM B584
13	RUBBER GSKT	NITRILE ASTM D2000



MEETS ALL REQUIREMENTS OF AWWA C800  
 ALL STEMS ARE LEAD FREE BRASS ALLOY C89833/C69300  
 ALL WETTED PARTS ARE LEAD FREE BRASS ALLOY C89833/C87850  
 ALL NON WETTED PARTS ARE BRASS ALLOY C83600/C87850

DWG NUMBER  
B25251N

TITLE TO AND OWNERSHIP OF THIS ENGINEERING DATA REMAINS IN Mueller Co. NO USE IS TO BE MADE OF THIS DATA EXCEPT AS SPECIFICALLY AUTHORIZED BY Mueller Co. ASSENT ON THE PART OF THE RECIPIENT TO THESE CONDITIONS IS PRESUMED

DRFTR	AD	03/06/23	<b>MUELLER</b>	
CHKR				
ENGR			UNLESS OTHERWISE NOTED SURFACE PREPARATION: BREAK CORNER(S) ---- .000 SURFACE FINISH -- XX RMS	THIRD ANGLE PROJECTION
MGR				REF. No.
	BY	DATE	TOLERANCE(S): LINEAR ----- ± .000 ANGULAR ----- ± 0°00'	FULL
STK No:				
MAT'L:				
DESCR.			1" RESIDENTIAL FIRE VALVE 360° TURN (FIP x METER x FIP)	
			DWG NUMBER B25251N	