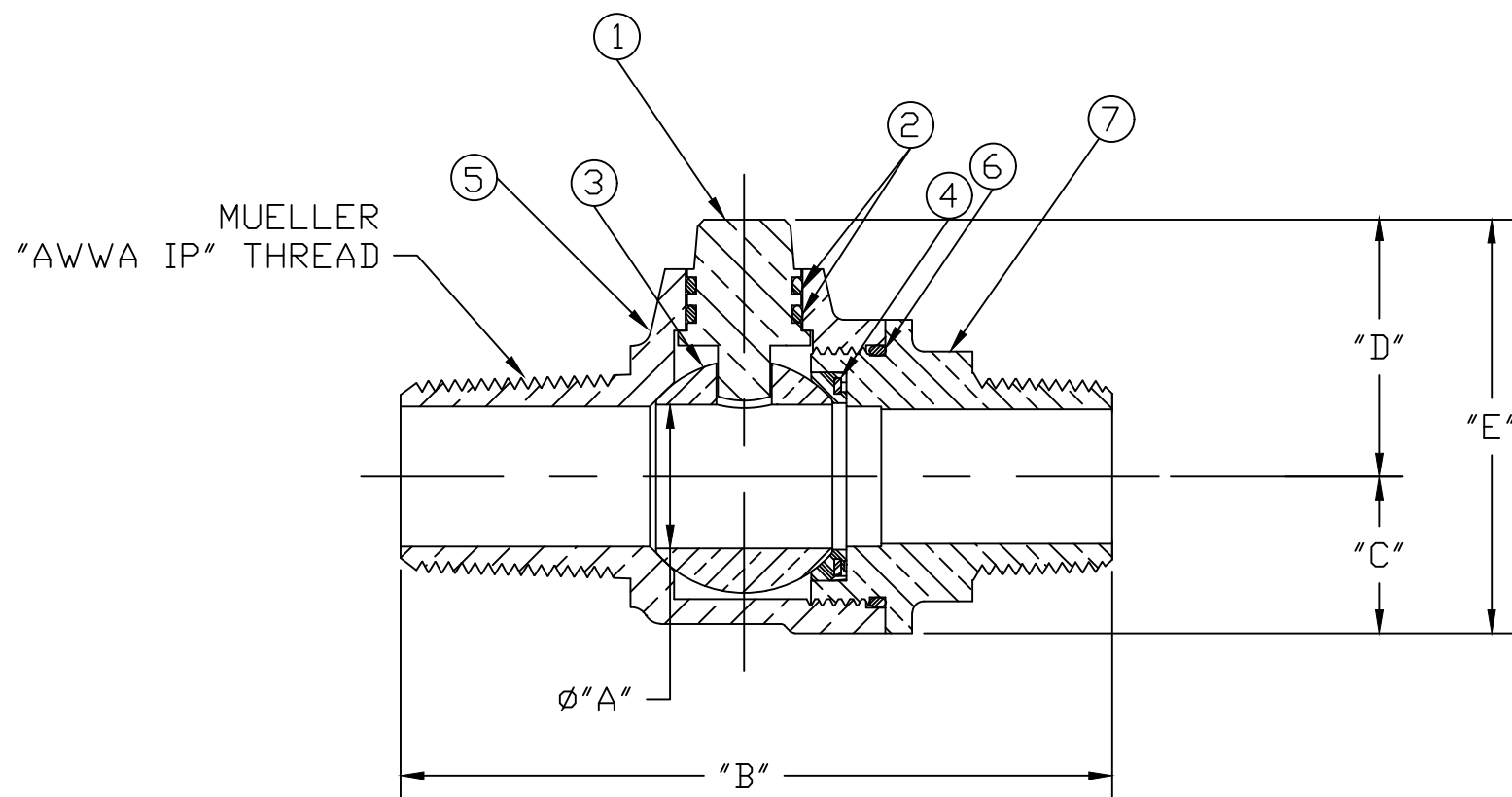


No.	QTY.	DESCRIPTION	MATERIAL
1	1	STEM	NO LEAD BRASS ALLOY
2	2	O-RING	EPDM D2000
3	1	BALL	NO LEAD BRASS ALLOY
4	1	GASKET - SEAL	NITRILE D2000
5	1	BODY	CAST NO LEAD BRASS ALLOY
6	1	O-RING	EPDM D2000
7	1	END PIECE	CAST NO LEAD BRASS ALLOY



SIZE	ØA	B	C	D	E
1-1/2"	1.500	5.829	1.500	2.235	3.735
2"	2.000	6.404	1.820	2.557	4.377

ALL WETTED PARTS ARE NO LEAD BRASS ALLOY

FILEPATH: PROD-ENG\MUELLER\APPROVED\B2969N

						DRFTR	RWB	6/25/03	MUELLER	THIRD ANGLE PROJECTION
						CHKR				
						ENGR				
						MGR				
									UNLESS OTHERWISE NOTED	
									SURFACE PREPARATION:	
									BREAK CORNER(S) ---- .000	REF. No.
									SURFACE FINISH -- 000 RMS	SCALE
									TOLERANCE(S):	NONE
									LINEAR ----- ± .000	
									ANGULAR ----- ± 0°00'	
									STK No:	
									MAT'L:	
									DESCR.	
									MUELLER CORP. STOP BALL VALVE	DWG NUMBER
									NO LEAD BRASS ("AWWA IP" x MIP)	B2969N

TITLE TO AND OWNERSHIP OF THIS ENGINEERING DATA REMAINS IN Mueller Co. NO USE IS TO BE MADE OF THIS DATA EXCEPT AS SPECIFICALLY AUTHORIZED BY Mueller Co. ASSENT ON THE PART OF THE RECIPIENT TO THESE CONDITIONS IS PRESUMED.

REV ECR DESCRIPTION DATE BY CHKR
PER EST NO: DXXXX EST FIN WT = 0.0000 lbs

DWG NUMBER
B2969N
442-MRKTG