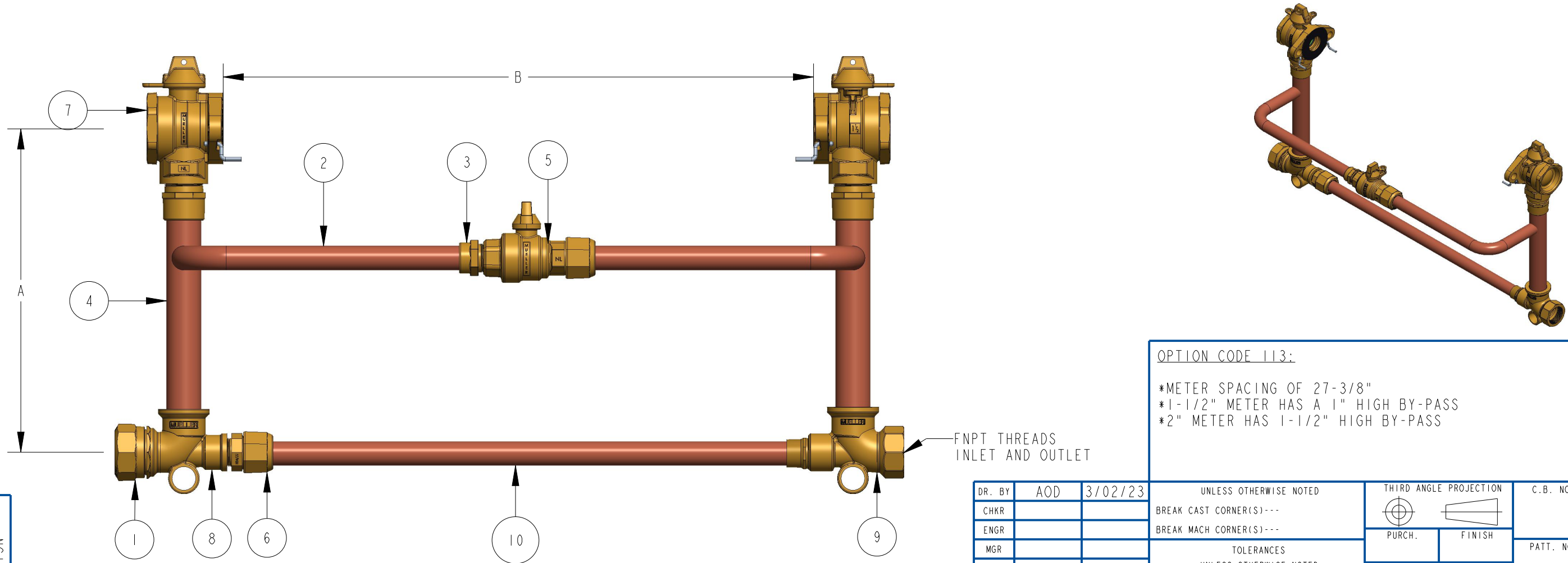


METER SIZE	1-1/2"	2"
A (MINIMUM)	18"	18"
B	27-3/8"	27-3/8"
CTS COMPRESSION FITTING	507847	507851
HIGH BY-PASS TUBE	551559	526248
SPUD	074955E	508453E
INLINE BALL VALVE (110 X FIP)	500B25170N	550B25170N
RISER TEE COMP X SOLDER X FIP	549758E	549756E
RISER TEE FIP X SOLDER X FIP	551416E	546234E

ITEM NO	PART NUMBER	QTY	DESCRIPTION	MATERIAL
1		1	CTS COMPRESSION FITTING	LEAD FREE BRASS ALLOY ASTM B584 C89833/C87850
2		2	HIGH BY-PASS TUBE	COPPER TUBING ASTM B75
3		1	SPUD	LEAD FREE BRASS ALLOY ASTM B584 C89833/C87850
4		2	RISER SUB ASSEMBLY	HARD COPPER TUBING UNS C12200 H80 TEMPER
5	B25170N	1	INLINE BALL VALVE (110 X FIP)	LEAD FREE BRASS ALLOY ASTM B584 C89833/C87850
6	330H15428N	1	MIP X CTS COMPRESSION TAILPIECE	LEAD FREE BRASS ALLOY ASTM B584 C89833/C87850
7	B242860IN	2	FULL PORT BALL VALVE	LEAD FREE BRASS ALLOY ASTM B584 C89833/C87850
8		1	RISER TEE CTS COMP X SOLDER X FIP	LEAD FREE BRASS ALLOY ASTM B584 C89833/C87850
9		1	RISER TEE FIP X SOLDER X FIP	LEAD FREE BRASS ALLOY ASTM B584 C89833/C87850
10	551557E	1	1" TIE BAR SUBASSEMBLY	HARD COPPER TUBING UNS C12200 H80 TEMPER



OPTION CODE 113:
 *METER SPACING OF 27-3/8"
 *1-1/2" METER HAS A 1" HIGH BY-PASS
 *2" METER HAS 1-1/2" HIGH BY-PASS

C2423-113N

DR. BY	AOD	3/02/23	UNLESS OTHERWISE NOTED	THIRD ANGLE PROJECTION	C.B. NO.
CHKR			BREAK CAST CORNER(S)---		
ENGR			BREAK MACH CORNER(S)---	PURCH.	FINISH
MGR			TOLERANCES	REF. NO.	PATT. NO.
MFG			UNLESS OTHERWISE NOTED	STK. NO.	
TOOL			LINEAR	ANGULAR	
FDRY			±	±	
MAT'L:					
		DESCR.	COPPER METER SETTER LEAD FREE BRASS		NUMBER C2423-113N