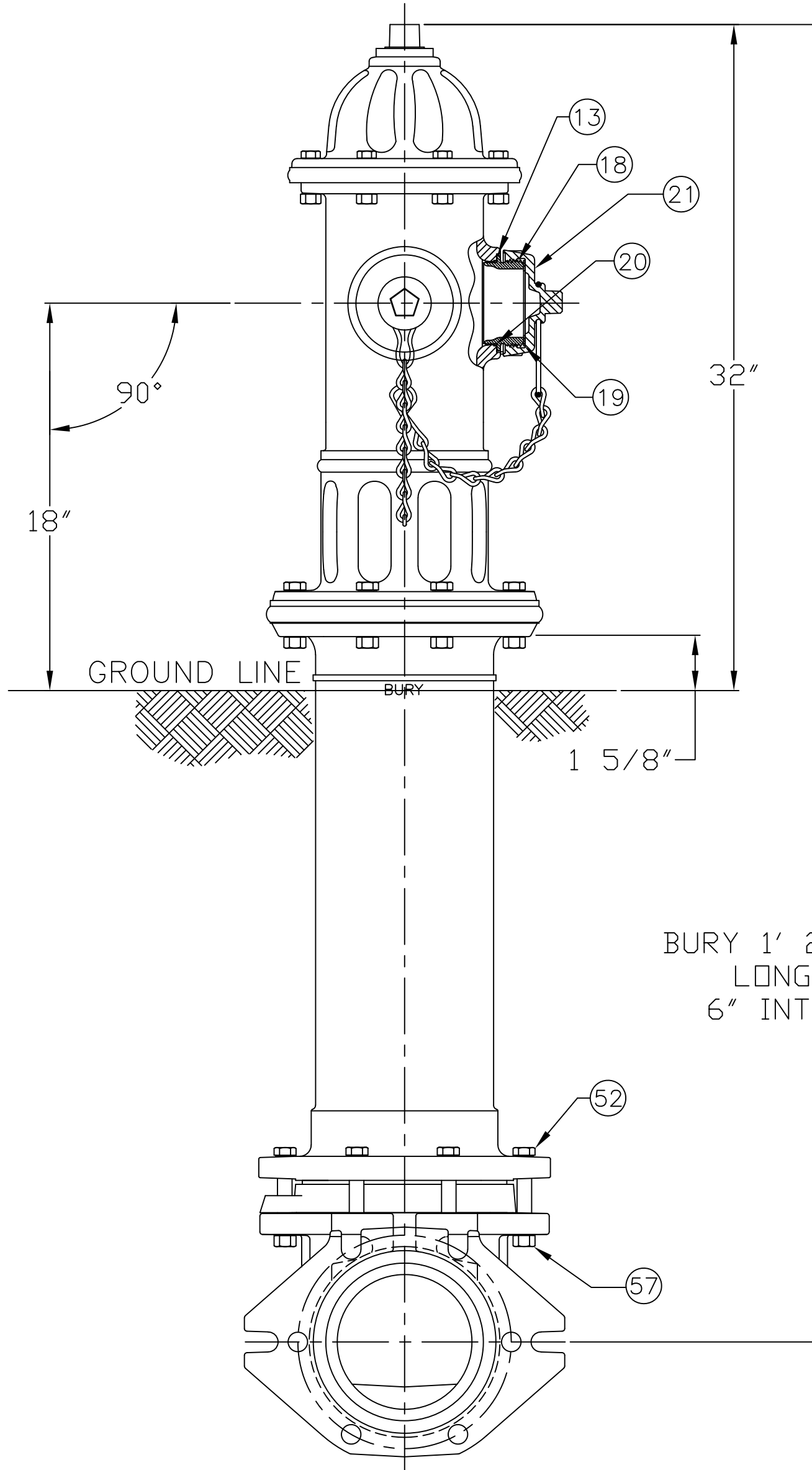


4 1/2" A433 & 5 1/4" A435 CENTURION UL-FM w/ TWO HOSE NOZZLES
- 250 P.S.I. W.P. - 500 P.S.I. TEST, 2019 STYLE.

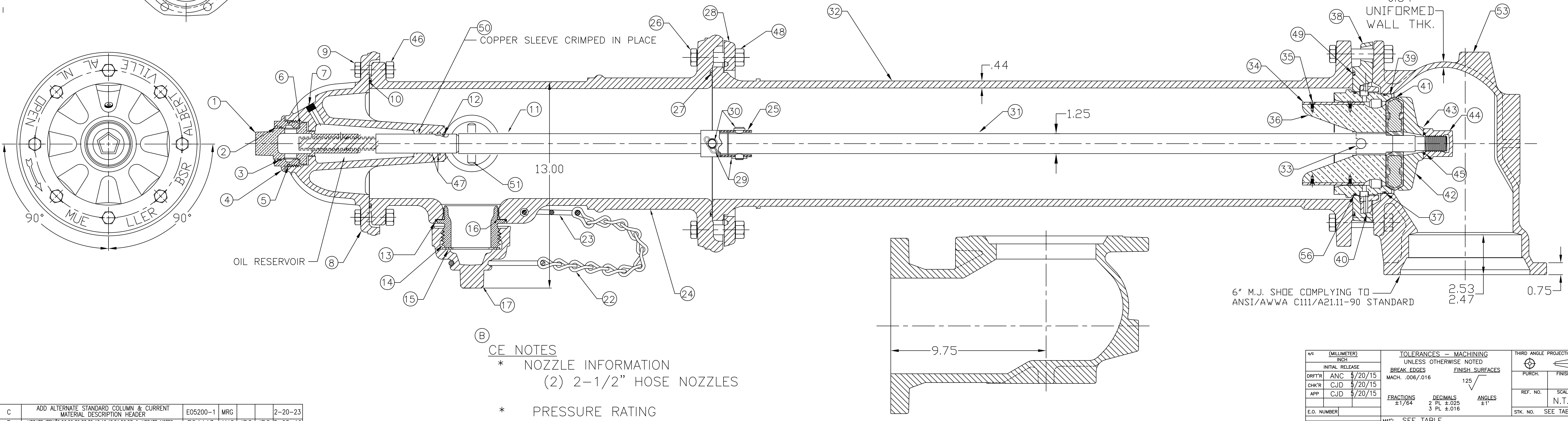


ITEM	DESCRIPTION	REQ'D	MATERIAL	A.S.T.M.	CURRENT MATERIAL DESCRIPTION	ALTERNATE STANDARD
1	OPERATING NUT	1	BRONZE	B-62	C83600	B584 C87850 OR C87600
2	WIPER RING	1	RUBBER	D-2000	EPDM	
3	HOLD DOWN NUT "O" RING	1	RUBBER	D-2000	BUNA N	
4	HOLD DOWN NUT	1	BRONZE	B-62	C83600	B584 C87850 OR C87600
5	BONNET "O" RING	1	RUBBER	D-2000	BUNA N	
6	ANTI-FRICTION WASHER	1	CELCON		GR M90-04	
7	OIL FILLER PLUG	1	BRASS	B-16	ALLOY 360	
8	BONNET	1	CAST IRON	A-126	CLASS B	
9	BONNET BOLT	8	STEEL	J429	GR5 GALVANIZED	
10	TOP UPPER BARREL O-RING	1	RUBBER	D-2000	EPDM	
11	UPPER STEM	1	CARBON STEEL	A-576	GR 1144T	
12	STEM "O" RING (UPPER)	1	RUBBER	D-2000	BUNA N	
13	NOZZLE LOCK	2	STAINLESS STEEL	A-276	305 OR 410	
14	HOSE NOZZLE	1	BRONZE	B-584	C89833	B584 C87850 OR C87600
15	HOSE NOZZLE CAP GASKET	1	RUBBER	D-2000	NEOPRENE	
16	HOSE NOZZLE "O" RING	1	RUBBER	D-2000	EPDM	
17	HOSE NOZZLE CAP	1	CAST IRON	A-126	CLASS B	
18	HOSE NOZZLE	1	BRONZE	B-584	C89833	B584 C87850 OR C87600
19	HOSE NOZZLE CAP GASKET	1	RUBBER	D-2000	NEOPRENE	
20	HOSE NOZZLE "O" RING	1	RUBBER	D-2000	EPDM	
21	HOSE NOZZLE CAP	1	CAST IRON	A-126	CLASS B	
22	CAP CHAIN	2	STEEL		ELECTRO GALV.	
23	CHAIN HOOK	1	STEEL		ELECTRO GALV.	
24	UPPER BARREL	1	CAST IRON	A-126	CLASS B	
25	TRAFFIC STEM COUPLING	1	STAINLESS STEEL	A-890	1.5% SILICON MAX	
26	TRAFFIC FLANGE BOLT	8	STEEL	J429	GR5 GALVANIZED	
27	TRAFFIC FLANGE O-RING	1	RUBBER	D-2000	EPDM	
28	TRAFFIC FLANGE	1	CAST IRON	A-126	CLASS B	
29	REUSABLE COTTER PIN	2	STAINLESS STEEL		18-8	
30	CLEVIS PIN	2	STAINLESS STEEL	A-276	300 SERIES	

SEE CAT. RECORD FOR RESPECTIVE PARTS OR SUB. ASS'YS

ITEM	DESCRIPTION	REQ'D	MATERIAL	A.S.T.M.	CURRENT MATERIAL DESCRIPTION	ALTERNATE STANDARD
31	LOWER STEM	1	CARBON STEEL	A-576	GR 1144T	
32	LOWER BARREL	1	CAST IRON	A-126	CLASS B	
33	STEM PIN	1	STAINLESS STEEL	A-276	300 SERIES	
34	DRAIN VALVE FACING	2	H.D. POLYETHYLENE		LS 5660-00	
35	DRAIN VALVE FACING SCREW	4	STAINLESS STEEL	A-276	300 SERIES	
36	UPPER VALVE PLATE	1	BRONZE	B-584	C89833	B584 C87850 OR C87600
37	BOTTOM SEAT "O" RING	1	RUBBER	D-2000	EPDM	
38	DRAIN RING HOUSING	1	CAST IRON	A-126	CLASS B	
39	SEAT RING	1	BRONZE	B-584	C89833	B584 C87850 OR C87600
40	DRAIN RING	1	BRONZE	B-62	C83600	B584 C87850 OR C87600
41	MAIN VALVE	1	RUBBER	D-2000	EPDM	
42	LOWER VALVE PLATE	1	CAST IRON	A-126	CLASS B	
43	LOCK WASHER	1	STAINLESS STEEL	A-276	304	
44	VALVE NUT	1	CAST IRON	A-126	CLASS B	
45	VALVE NUT SEAL	1	RUBBER		NATURAL	
46	BONNET NUT	8	STEEL	J995	GR8 GALVANIZED	
47	STEM O-RING	2	RUBBER	D-2000	BUNA N	
48	TRAFFIC FLANGE NUT	8	STEEL	J429	GR5 GALVANIZED	
49	DRAIN RING HOUSING O-RING	1	RUBBER	D-2000	EPDM	
50	SLEEVE	1	COPPER	B-75	ALLOY 122	
51	UPPER STEM PIN	1	STAINLESS STEEL	A-276	303	
52	HEX BOLT	6	STEEL	J429	GR5 GALVANIZED	
53	SHOE	1	DUCTILE IRON	A-536	65-45-12	GR. 70-50-05
* 54	PIPE GLAND	1	CAST IRON	A-126	CLASS B	
* 55	T-HEAD BOLT	6	STEEL	A-242	TYPE 1	
56	TOP SEAT "O" RING	1	RUBBER	D-2000	EPDM	
57	SHOE HEX NUT	6	STEEL	J995	GR5 GALVANIZED	
* 58	MECH JOINT GASKET	1	RUBBER	D-2000	NATURAL	
* 59	HEX NUT 3/4"	6	STEEL	A-242	TYPE 1	
* 60	BURY TAG	1	STAINLESS STEEL	A-240	304	
* 61	CE TAG	1	STAINLESS STEEL	A-240	304	

* OPTIONAL



CE NOTES
 * NOZZLE INFORMATION
 (2) 2-1/2" HOSE NOZZLES
 * PRESSURE RATING
 250 WP ONLY

APR (MILLIMETER)	TOLERANCES - MACHINING	THIRD ANGLE PROJECTION
INCH	UNLESS OTHERWISE NOTED	
INITIAL RELEASE	BREAK EDGES	PURCH.
DRFTR ANC 5/20/15	MACH. .006/.016	FINISH SURFACES
CHKR CJD 5/20/15	125	SCALE
APP CJD 5/20/15	FRACTIONS ±1/64	REF. NO.
	DECIMALS 2 PL ±.025	N.T.S.
	ANGLES ±1'	STK. NO.
E.O. NUMBER		SEE TABLE
MATERIAL: SEE TABLE		REVISION
DESCR: 4 1/2" A433 & 5 1/4" A435 CENTURION W/TWO HOSE NOZZLES		NUMBER
MUELLER		CE-FH-111
		SHEET 1 OF 1

DWG. CE-FH-111

REV.	DESCRIPTION	REF.	DRFTR	CHKR	APP	DATE
C	ADD ALTERNATE STANDARD COLUMN & CURRENT MATERIAL DESCRIPTION HEADER	E05200-1	MRC			2-20-23
B	UPDATE ITEM# 9,26,29,30,33,35,43,46,48,51,52,57 & UPDATE NOTES	E04443	ANC	JBC	JBC	3-25-19
A	REVISE MATERIAL ON ITEM# 3,5,10,12,16,20,27,37,41,47,49,56		ANC			12-2-15