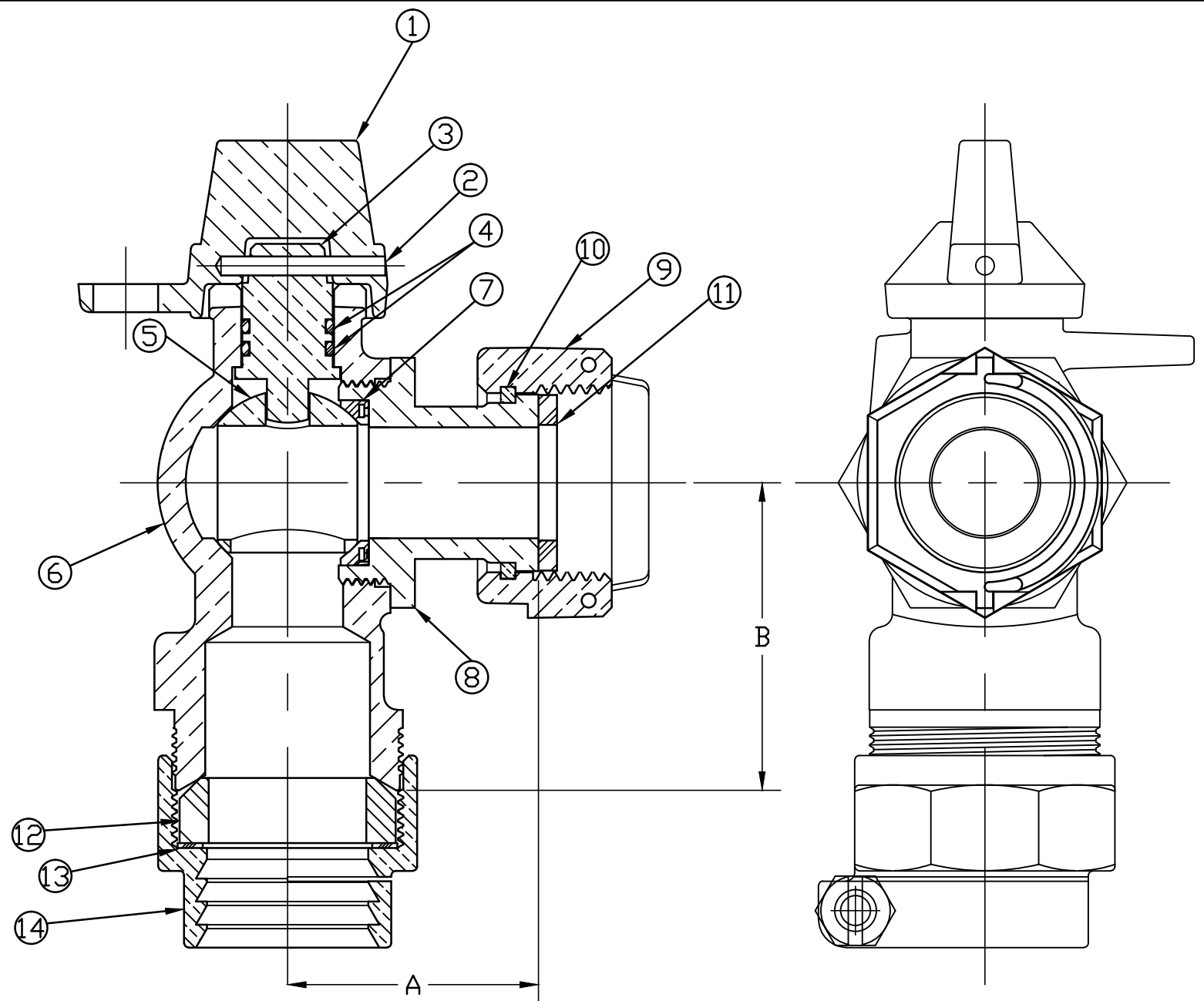


No.	DESCRIPTION	MATERIAL
1	CAP	CAST BRASS ASTM B62 ALLOY C83600
2	SOLID PIN	BRASS ASTM B16 ALLOY C36000
3	STEM	LOW LEAD BRASS ALLOY
4	O-RING	EPDM ASTM D2000
5	BALL	LOW LEAD BRASS ALLOY
6	BODY	CAST LOW LEAD BRASS ALLOY
7	GASKET - SEAL	NITRILE ASTM D2000
8	END PIECE	CAST LOW LEAD BRASS ALLOY
9	SADDLE NUT	CAST BRASS ASTM B62 ALLOY C83600
10	SNAP RING	PHOS BRONZE
11	RUBBER GASKET	NITRILE ASTM D2000
12	COMP GASKET	BUNA N ASTM D2000
13	WASHER	POLYPROPYLENE
14	CLPG NUT SUB	CAST BRASS ASTM B62 ALLOY C83600

METER CONNX SIZE	A	B
5/8x3/4 or 3/4	1.70	2.08
5/8x3/4x1	1.95	2.56
1	1.95	2.56



ALL WETTED PARTS ARE LOW LEAD BRASS ALLOY

FILEPATH: PROD-ENG\MUELLER\ASTSUBMITTALS\E24259N

DRFTR	Garvin	1/23/12	Mueller Co.		
CHKR					
ENGR					
MGR					
UNLESS OTHERWISE NOTED			THIRD ANGLE PROJECTION		
SURFACE PREPARATION:					
BREAK CORNER(S) ---- .000					
SURFACE FINISH -- XX RMS			REF. No.	SCALE	
TOLERANCE(S):			NONE		
LINEAR ----- ± .000					
ANGULAR ----- ± 0°00'					
BY DATE					
STK No:					
MAT'L:					
DESCR.			DWG NUMBER		
LLB BALL ANGLE METER VALVE			E24259N		
(PEP PJ x MTR)					
REV	ECR	DESCRIPTION	DATE	BY	CHKR
PER EST NO: DXXXX EST FIN WT = 0.0000 lbs					

DWG NUMBER
E24259N
442-MRKTG

TITLE TO AND OWNERSHIP OF THIS ENGINEERING DATA REMAINS IN Mueller Co. NO USE IS TO BE MADE OF THIS DATA EXCEPT AS SPECIFICALLY AUTHORIZED BY Mueller Co. ASSENT ON THE PART OF THE RECIPIENT TO THESE CONDITIONS IS PRESUMED