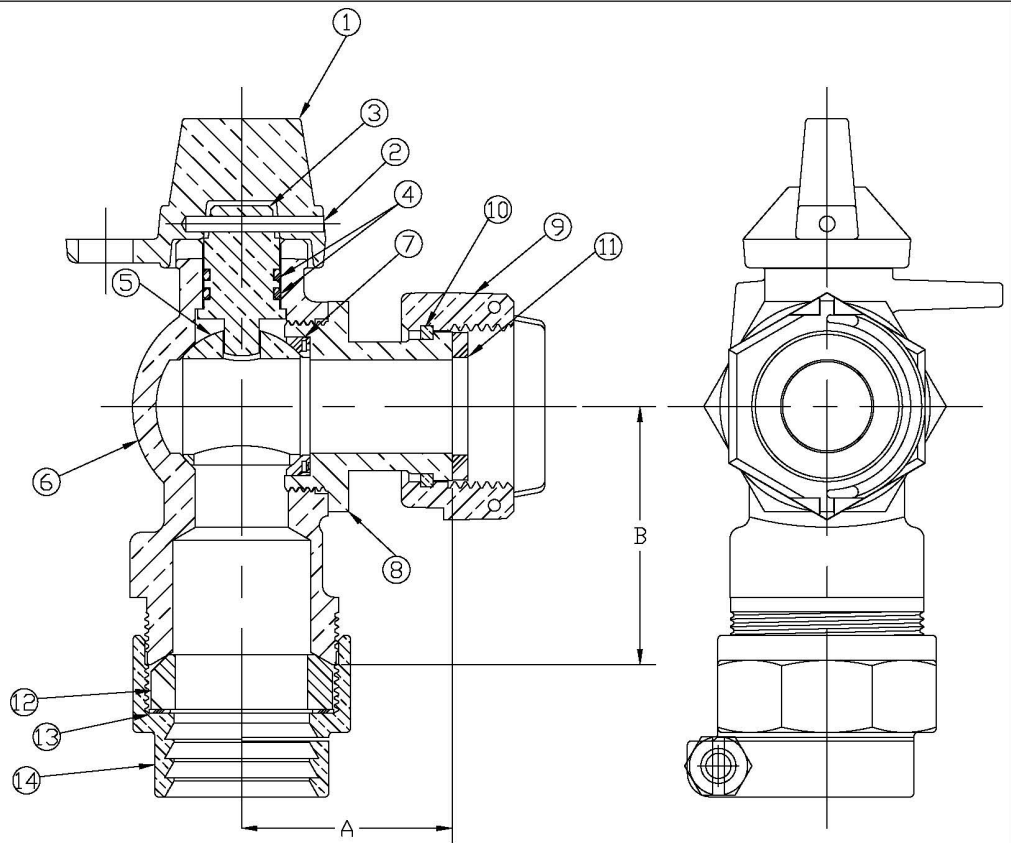


| No. | DESCRIPTION | MATERIAL |
|-----|---------------|----------------------------------|
| 1 | CAP | CAST BRASS ASTM B62 ALLOY C83600 |
| 2 | SOLID PIN | BRASS ASTM B16 ALLOY C36000 |
| 3 | STEM | NO LEAD BRASS ALLOY |
| 4 | O-RING | EPDM ASTM D2000 |
| 5 | BALL | NO LEAD BRASS ALLOY |
| 6 | BODY | CAST NO LEAD BRASS ALLOY |
| 7 | GASKET - SEAL | NITRILE ASTM D2000 |
| 8 | END PIECE | CAST NO LEAD BRASS ALLOY |
| 9 | SADDLE NUT | CAST BRASS ASTM B62 ALLOY C83600 |
| 10 | SNAP RING | PHOS BRONZE |
| 11 | RUBBER GASKET | NITRILE ASTM D2000 |
| 12 | COMP GASKET | BUNA N ASTM D2000 |
| 13 | WASHER | POLYPROPYLENE |
| 14 | CLPG NUT SUB | CAST BRASS ASTM B62 ALLOY C83600 |

| METER CONNX SIZE | A | B |
|------------------|------|------|
| 5/8x3/4 or 3/4 | 1.70 | 2.08 |
| 5/8x3/4x1 | 1.95 | 2.56 |
| 1 | 1.95 | 2.56 |



ALL WETTED PARTS ARE NO LEAD BRASS ALLOY

FILEPATH: PROD-ENG\MUELLER\ASTSUBMITTALS\E24259N

| | | | | | | | | | | | | |
|--|--|--|--|--|-------------|--|---------|----------------|--|------------------------|------------|------|
| | | | | | DRFTR | Garvin | 1/23/12 | MUELLER | UNLESS OTHERWISE NOTED SURFACE PREPARATION: BREAK CORNER(S) ---- .000 SURFACE FINISH -- XX RMS TOLERANCE(S): LINEAR ----- ± .000 ANGULAR ----- ± 0°00' | THIRD ANGLE PROJECTION | | |
| | | | | | CHKR | | | | | REF. No. | SCALE | NONE |
| | | | | | ENGR | | | | | | | |
| | | | | | MGR | | | | | | | |
| | | | | | BY | DATE | | | | | | |
| | | | | | STK No: | | | | | | | |
| | | | | | MAT'L: | | | | | | | |
| | | | | | DESCR. | NLB BALL ANGLE METER VALVE (PEP PJ x MTR) | | | | | DWG NUMBER | |
| | | | | | PER EST NO: | DXXXX EST FIN WT = 0.0000 lbs | | | | | E24259N | |

DWG NUMBER
E24259N
442-MRKTG

TITLE TO AND OWNERSHIP OF THIS ENGINEERING DATA REMAINS IN Mueller Co. NO USE IS TO BE MADE OF THIS DATA EXCEPT AS SPECIFICALLY AUTHORIZED BY Mueller Co. ASSENT ON THE PART OF THE RECIPIENT TO THESE CONDITIONS IS PRESUMED