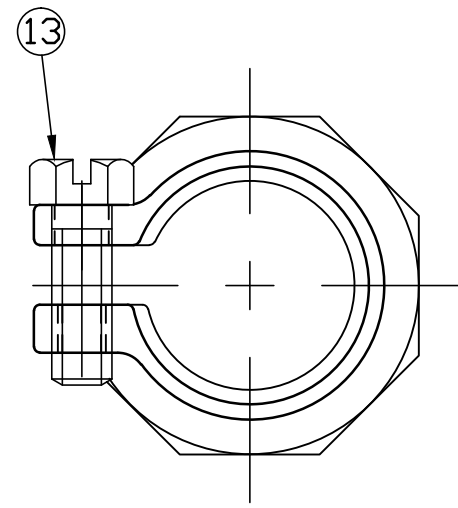
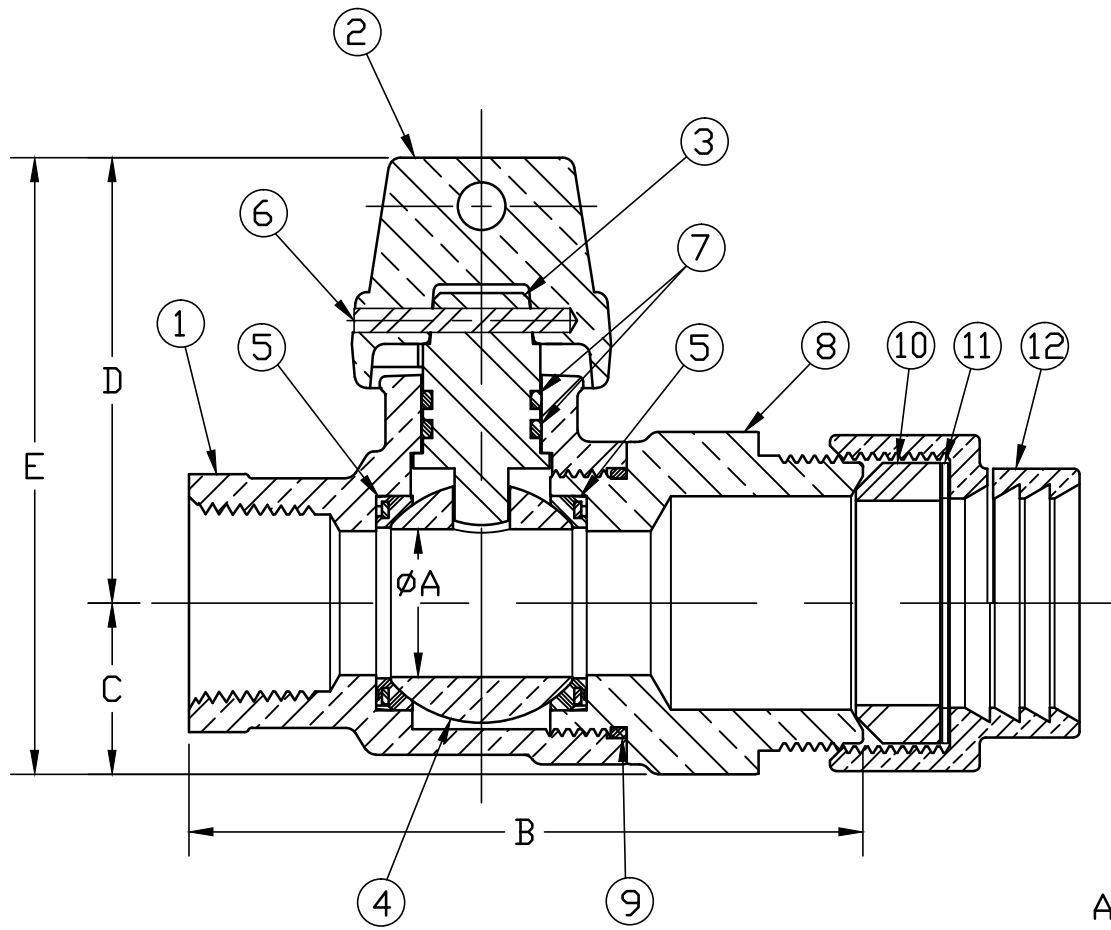


No.	DESCRIPTION	MATERIAL DESCRIPTION
1	BODY	CAST LOW LEAD BRASS ALLOY
2	CAP	CAST BRASS ASTM B62 ALLOY C83600
3	STEM	LOW LEAD BRASS ALLOY
4	BALL	LOW LEAD BRASS ALLOY
5	GASKET	ASTM D2000 (NITRILE)
6	SOLID PIN	AISI 303 STAINLESS STEEL
7	O-RING	ASTM D2000 (EP)
8	END PIECE	CAST LOW LEAD BRASS ALLOY
9	O-RING	ASTM D2000 (EP)
10	COMP GASKET	NITRILE ASTM D2000
11	WASHER	POLYPROPYLENE
12	COUPLING NUT	CAST BRASS ASTM B62 ALLOY C83600
13	CAP SCREW	304 STAINLESS STEEL



SIZE	ØA	B	C	D	E
3/4"	.75	3.51	.89	2.32	3.21
1"	1.00	4.23	1.15	2.52	3.67
1-1/2"	1.50	5.50	1.66	3.35	5.01
2"	2.00	6.59	1.82	3.90	5.72

ALL WETTED PARTS ARE LOW LEAD BRASS ALLOY

FILEPATH: PROD-ENG\MUELLER\ASYSUBMITTALS\E25171N

DRFTR	RWB	4/3/15	<b>Mueller Co.</b>			
CHKR						
ENGR						
MGR						
BY			DATE	UNLESS OTHERWISE NOTED	THIRD ANGLE PROJECTION	
STK No:				SURFACE PREPARATION:		
MAT'L:				BREAK CORNER(S) ---- .000		
DESCR.				SURFACE FINISH --XXX RMS	REF. No.	
PER EST NO: DXXXX			EST FIN WT = 0.0000 lbs	TOLERANCE(S):	SCALE	
				LINEAR ----- ± .000	FULL	
				ANGULAR ----- ± 0°00'		
REV	ECR	DESCRIPTION	DATE	BY	CHKR	DWG NUMBER
						E25171N

DWG NUMBER  
E25171N  
442-MRKTG

TITLE TO AND OWNERSHIP OF THIS ENGINEERING DATA REMAINS IN Mueller Co. NO USE IS TO BE MADE OF THIS DATA EXCEPT AS SPECIFICALLY AUTHORIZED BY Mueller Co. ASSENT ON THE PART OF THE RECIPIENT TO THESE CONDITIONS IS PRESUMED