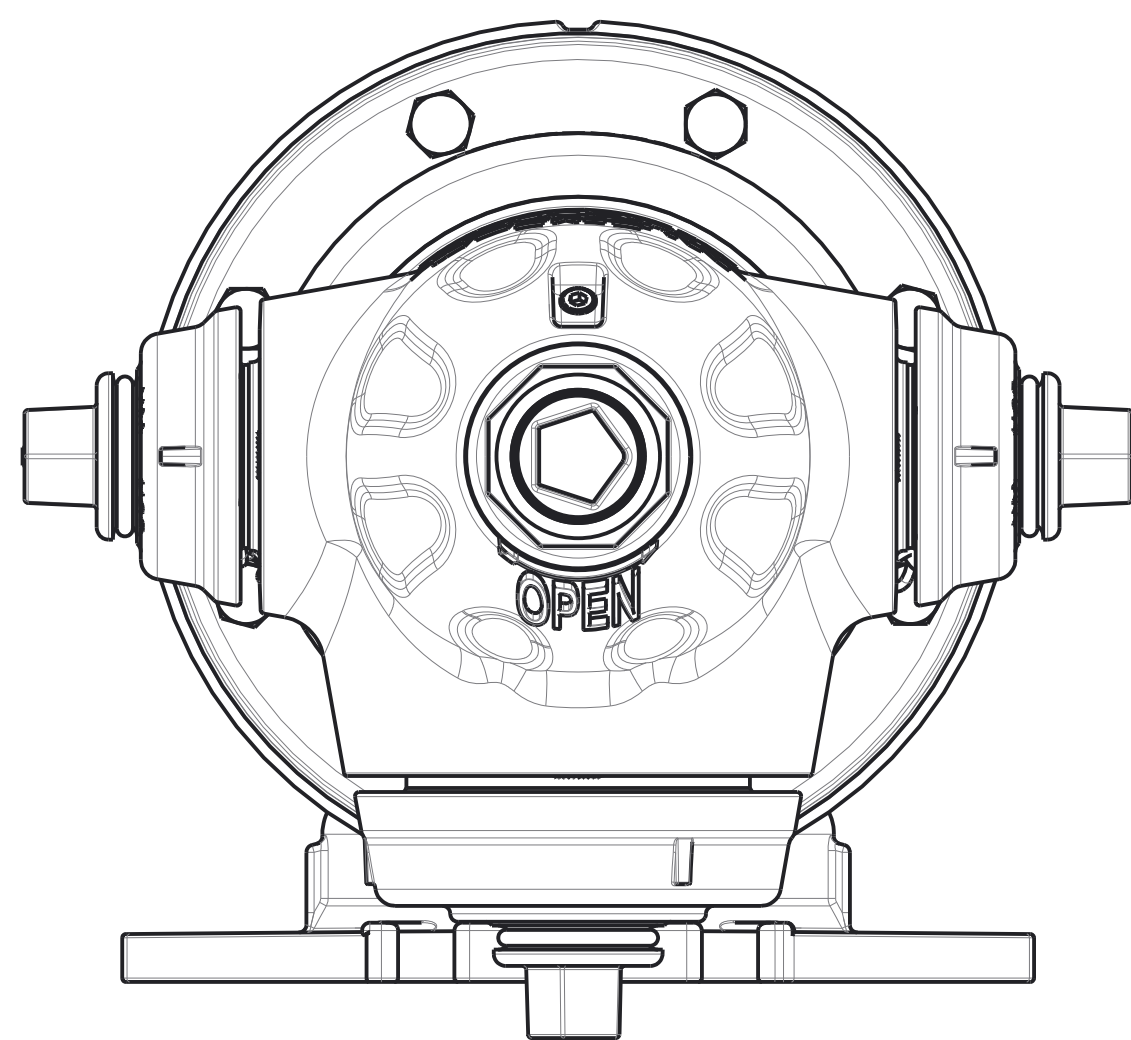


SCALE 0.160

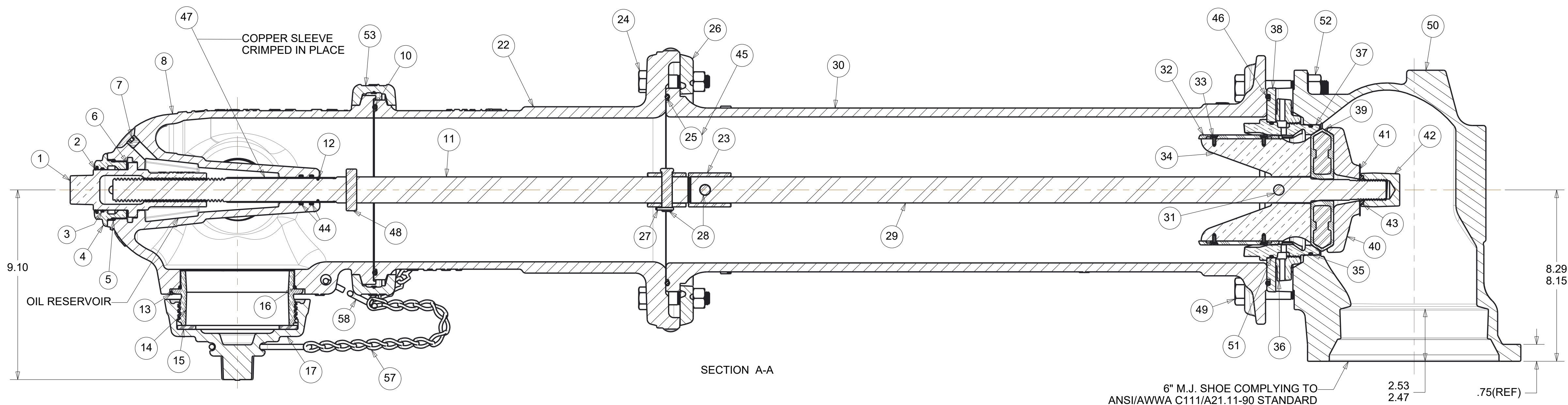


PARTS LIST					
ITEM	DESCRIPTION	REQ'D	MATERIAL	A.S.T.M.	ALTERNATE STANDARD
1	OPERATING NUT	1	BRONZE	B-62	ALLOY C83600
2	WIPER RING	1	RUBBER	D-2000	EPDM
3	HOLD DOWN NUT INTERNAL O-RING	1	RUBBER	D-2000	BUNA N
4	HOLD DOWN NUT	1	BRONZE	B-62	ALLOY C83600
5	HOLD DOWN NUT EXTERNAL O-RING	1	RUBBER	D-2000	BUNA N
6	ANTI-FRICTION WASHER	2	NYLON MDS		
7	OIL FILLER PLUG	1	BRASS	B-16	ALLOY 360
8	NOZZLE SECTION	1	DUCTILE IRON	A-536	65-45-12 OR 70-50-05
9	HEX BOLT .625"-11 X 2.750" LG	2	STEEL	A563	SAE J429 GRADE 5
10	NOZZLE SECTION LOWER O-RING	1	RUBBER	D-2000	BUNA N
11	UPPER STEM	1	CARBON STEEL	A-576	GR 1144T
12	STEM O-RING	1	RUBBER	D-2000	BUNA N
13	NOZZLE LOCK	3	STAINLESS STEEL	A-276	305 OR 410
14	PUMPER NOZZLE	1	BISMUTH BRASS	B-584	ALLOY C89833
15	PUMPER NOZZLE CAP GASKET	1	RUBBER	D-2000	NEOPRENE
16	PUMPER NOZZLE O-RING	1	RUBBER	D-2000	BUNA N
17	PUMPER NOZZLE CAP	1	DUCTILE IRON	A-536	65-45-12 OR 70-50-05
18	HOSE NOZZLE	2	BISMUTH BRASS	B-584	ALLOY C89833
19	HOSE NOZZLE CAP GASKET	2	RUBBER	D-2000	NEOPRENE
20	HOSE NOZZLE O-RING	2	RUBBER	D-2000	BUNA N
21	HOSE NOZZLE CAP	2	DUCTILE IRON	A-536	65-45-12 OR 70-50-05
22	LOWER TRAFFIC SECTION	1	DUCTILE IRON	A-536	65-45-12 OR 70-50-05
23	STEM TRAFFIC COUPLING	1	STAINLESS STEEL	A-890	1.5% SILICON MAX.
24	TRAFFIC FLANGE BOLT .625"-11 X 3.00" LG	8	STEEL	A563	SAE J429 GRADE 5
25	BOTTOM UPPER BARREL O-RING	1	RUBBER	D-2000	BUNA N
26	TRAFFIC FLANGE	1	GRAY IRON	A126	CLASS B
27	COTTOR PIN	2	STAINLESS STEEL	A-276	302
28	CLEVIS PIN	2	STAINLESS STEEL	A-276	305
29	LOWER STEM	1	CARBON STEEL	A-576	GRADE 1144T

SEE CAT. RECORD FOR RESPECTIVE PARTS OR SUB. ASSEMBLIES.

NOTE: SIZE AND STYLE OF OPERATING NUT, SHOE SIZE, AND THREADING OF NOZZLES IS PER CUSTOMER SPECS.

OPEN LEFT APPROXIMATELY 17-1/4 TURNS TO OPEN. OP. NUT DIMENSIONS PER CUSTOMER SPECS. STANDARD 1-1/2 PENT.



NOZZLE INFORMATION
1-PUMPER NOZZLE
 (4-1/2" NST)
2-HOSE NOZZLE
 (2-1/2" NST)

NOTES:
 1. REFERENCE DIMENSIONS ONLY. ACTUAL DIMENSIONS MAY VARY WITH TIGHTNESS OF CAP.
 2. SUBMITTAL DRAWING INTENDED FOR INFORMATIONAL PURPOSES ONLY.

ITEM	DESCRIPTION	REQ'D	MATERIAL	A.S.T.M.	ALTERNATE STANDARD
30	LOWER BARREL	1	DUCTILE IRON	A-536	65-45-12 OR 70-50-05
31	STEM PIN	1	STAINLESS STEEL	A-276	302
32	DRAIN VALVE FACING	2	H.D. POLYETHYLENE		LS 5660-00
33	DRAIN VALVE FACING SCREW	4	STAINLESS STEEL	A-276	302
34	UPPER VALVE PLATE	1	BISMUTH BRASS	B-584	ALLOY C89833
35	BOTTOM SEAT O-RING	1	RUBBER	D-2000	BUNA N
36	DRAIN RING	1	BRONZE	B-62	ALLOY C83600
37	SEAT RING	1	BISMUTH BRASS	B-584	ALLOY C89833
38	DRAIN RING HOUSING	1	GRAY IRON	A126	CLASS B
39	MAIN VALVE	1	RUBBER	D-2000	NATURAL
40	LOWER VALVE PLATE	1	GRAY IRON	A126	CLASS B
41	LOCK WASHER	1	STAINLESS STEEL	A-276	302
42	VALVE NUT	1	GRAY IRON	A-536	CLASS B
43	VALVE NUT SEAL	1	RUBBER		NITRILE
44	STEM O-RING	2	RUBBER	D-2000	BUNA N
45	TRAFFIC FLANGE/ BARREL COUPLING HEX NUT 5/8"	10	STEEL	A-563	SAE J429 GRADE 5
46	DRAIN RING HOUSING O-RING	1	RUBBER	D-2000	BUNA N
47	UPPER STEM SLEEVE	1	COPPER	B-75	ALLOY 122
48	UPPER STEM PIN	1	STAINLESS STEEL	A-276	302
49	SHOE HEX BOLT 3/4"-10 x 4.00" LG	6	STAINLESS STEEL	F593	316 STRAINED HARDENED
50	SHOE	1	DUCTILE IRON	A-536	65-45-12 OR 70-50-05
51	TOP SEAT O-RING	1	RUBBER	D-2000	BUNA N
52	SHOE HEX NUT 3/4"	6	STAINLESS STEEL	F594	316 STRAINED HARDENED
53	BARREL COUPLING	2	DUCTILE IRON	A-536	65-45-12 OR 70-50-05
* 54	PIPE GLAND	1	DUCTILE IRON	A-536	65-45-12 OR 70-50-05
* 55	MECH. JOINT GASKET	1	RUBBER	D-2000	NATURAL
* 56	T-HEAD BOLT 3/4x3.50	6	STEEL	A-242	A-588 TYPE 1
* 57	HEX NUT 3/4"	6	STEEL	A-242	A-588 TYPE 1
58	CAP CHAIN	3	STEEL		ELECTRO GALV.
59	CHAIN HOOK	1	STEEL		ELECTRO GALV.

* - NOT SHOWN

5-1/4 A-403HP MUELLER CENTURION W/ONE PUMPER NOZZLE & TWO HOSE NOZZLES
 350 PSI W.P. - 700 PSI TEST
 DRW. No. FH-10018

DATE: 6/5/18	INITIAL RELEASE: JBC	DRFT: JBC	CHK: R	APP: [Signature]	DATE: 6/5/18
TOLERANCES - MACHINING UNLESS OTHERWISE NOTED		THIRD ANGLE PROJECTION		PURCH. FINISH	
BREAK EDGES FINISH SURFACES		MACH. .006 / .016		REF. NO. SCALE 0.333	
FRACTIONS DECIMALS ANGLES		±1/64 2 PL ±.025 3 PL ±.010		STK. NO.	
E.O. NUMBER: EO4155		MATERIAL: 5-1/4" A-403HP MUELLER CENTURION HYDRANT		REVISION: FH-10018 SHEET 1 OF 1	