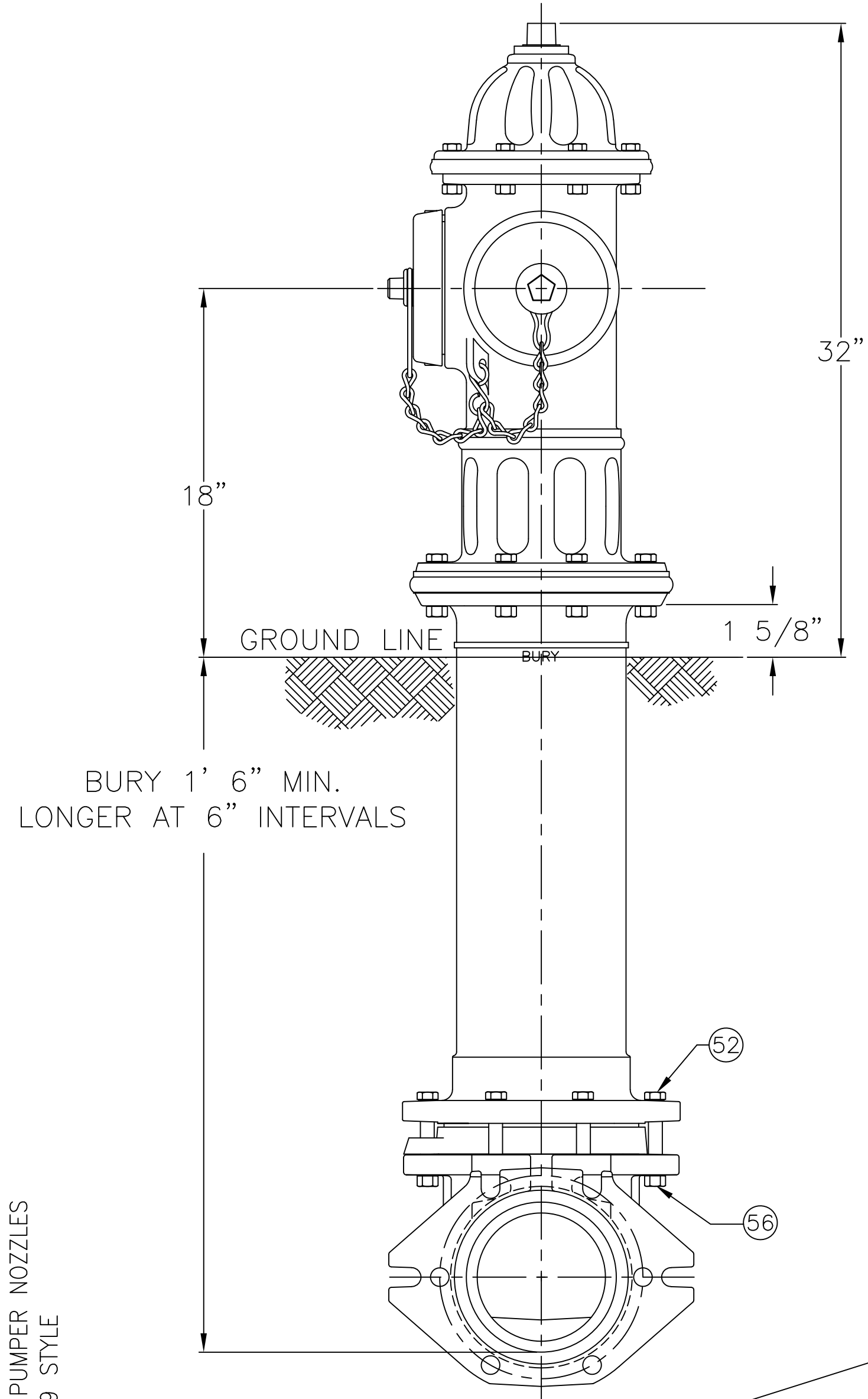


5 1/4" A425 SUPER CENTURION "350" W/ TWO PUMPER NOZZLES
350 P.S.I. W.P. - 700 P.S.I. TEST, 2019 STYLE

DWG. FH 105

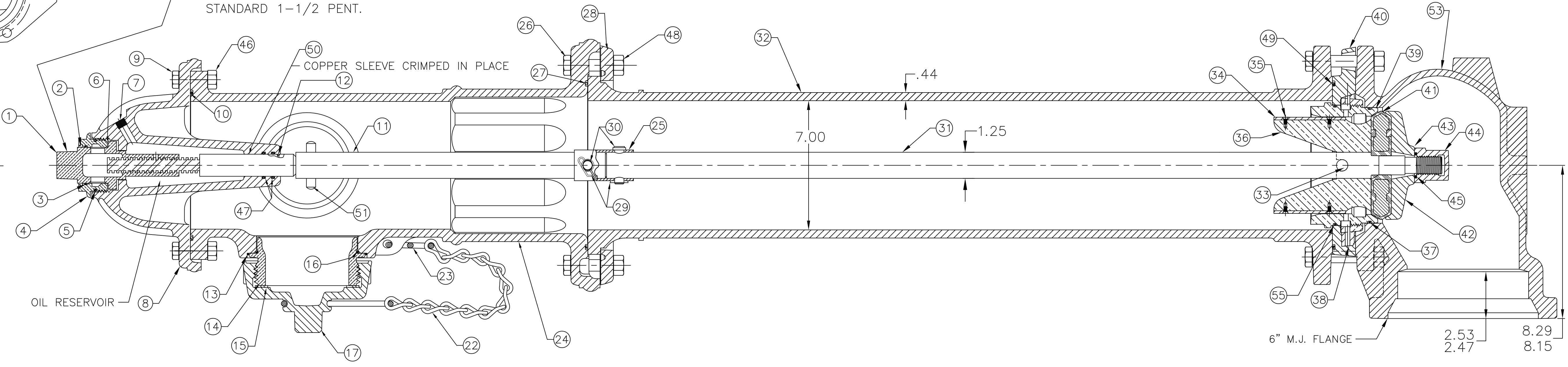
REV.	DESCRIPTION	REF.	DRWTR	CHKR	APP	DATE
E	UPDATE TO 2019 STYLE, ADD CURRENT MATERIAL HEADING AND ALTERNATE MATERIAL COLUMN	E05116	MRG	ANC	JBC	8-23-22
D	REVISE MATL ON ITEMS #9,26,27,38,46,52,53,56		ANC			5-12-17
C	REVISE MATL ON ITEMS #1,4,14,36,39		JMG			11-8-13
B	REVISE MATL ON ITEMS #11 & 31		ANC			2-24-12
A	REVISE ITEMS # 11 & 31		ANC			11-20-09



PARTS LIST						
ITEM	DESCRIPTION	REQ'D	MATERIAL	A.S.T.M.	CURRENT MATERIAL DESCRIPTION	ALTERNATE STANDARD
E 1	OPERATING NUT	1	BRONZE	B-62	ALLOY C83600	B584 C87850 OR C87600
2	WIPER RING	1	RUBBER	D-2000	EPDM	
3	HOLD DOWN NUT O-RING	1	RUBBER	D-2000	BUNA N	
E 4	HOLD DOWN NUT	1	BRONZE	B-62	ALLOY C83600	B584 C87850 OR C87600
5	BONNET O-RING	1	RUBBER	D-2000	BUNA N	
6	ANTI-FRICTION WASHER	1	CELCON		GRADE M90-04	
7	OIL FILLER PLUG	1	BRASS	B-16	ALLOY 360	
8	BONNET	1	CAST IRON	A-126	CLASS B	
E 9	HEX BOLT	8	STEEL	SAE J429	GR. 5 GALV.	
E 10	TOP UPPER BARREL O-RING	1	RUBBER	D-2000	BUNA N	
11	UPPER STEM	1	CARBON STEEL	A-576	GR 1144T	
12	STEM O-RING	1	RUBBER	D-2000	BUNA N	
13	NOZZLE LOCK	2	STAINLESS STEEL	A-276	305 OR 410	
E 14	PUMPER NOZZLE	2	BRASS	B-584	ALLOY C89833	B584 C87850 OR C87600
15	PUMPER NOZZLE CAP GASKET	2	RUBBER	D-2000	NEOPRENE	
16	PUMPER NOZZLE O-RING	2	RUBBER	D-2000	BUNA N	
17	PUMPER NOZZLE CAP	2	CAST IRON	A-126	CLASS B	
18						
19						
20						
21						
22	CAP CHAIN	2	STEEL		ELECTRO GALV.	
23	CHAIN HOOK	1	STEEL		ELECTRO GALV.	
24	UPPER BARREL	1	CAST IRON	A-126	CLASS B	
E 25	TRAFFIC STEM COUPLING	1	STAINLESS STEEL	A-890	1.5% SILICON MAX.	
E 26	TRAFFIC FLANGE BOLT	8	STEEL	SAE J429	GR. 5 GALV.	
27	BOTTOM UPPER BARREL O-RING	1	RUBBER	D-2000	BUNA N	
E 28	TRAFFIC FLANGE	2	CAST IRON	A-126	CLASS B	
E 29	REUSEABLE COTTER PIN	2	STAINLESS STEEL		18-8	
E 30	CLEVIS PIN	2	STAINLESS STEEL	A-276	300 SERIES	

SEE CAT. RECORD FOR RESPECTIVE PARTS OR SUB. ASS'YS
NOTE: SIZE AND STYLE OF OPERATING NUT, SHOE SIZE, AND THREADING OF NOZZLES IS PER CUSTOMER SPECS.

OPEN LEFT APPROXIMATELY 17 1/4 TURNS TO OPEN OP. NUT DIMENSIONS PER CUSTOMER SPECS. STANDARD 1-1/2 PENT.



ITEM	DESCRIPTION	REQ'D	MATERIAL	A.S.T.M.	CURRENT MATERIAL DESCRIPTION	ALTERNATE STANDARD
31	LOWER STEM	1	CARBON STEEL	A-576	GRADE 1144T	
E 32	LOWER BARREL	1	CAST IRON	A-126	CLASS B	
E 33	STEM PIN	1	STAINLESS STEEL	A-276	300 SERIES	
34	DRAIN VALVE FACING	2	H.D. POLYETHYLENE		LS 5660-00	
E 35	DRAIN VALVE FACING SCREW	4	STAINLESS STEEL	A-276	300 SERIES	
E 36	UPPER VALVE PLATE	1	BRASS	B-584	ALLOY C89833	B584 C87850 OR C87600
37	BOTTOM SEAT O-RING	1	RUBBER	D-2000	BUNA N	
E 38	DRAIN RING	1	BRONZE	B-62	ALLOY C83600	B584 C87850 OR C87600
E 39	SEAT RING	1	BRASS	B-584	ALLOY C89833	B584 C87850 OR C87600
40	DRAIN RING HOUSING	1	CAST IRON	A-126	CLASS B	
E 41	ENCAPSULATED MAIN VALVE	1	RUBBER	D-2000	NATURAL	
42	LOWER VALVE PLATE	1	CAST IRON	A-126	CLASS B	
E 43	LOCK WASHER	1	STAINLESS STEEL	A-276	304	
44	VALVE NUT	1	CAST IRON	A-126	CLASS B	
E 45	VALVE NUT SEAL	1	RUBBER		NATURAL	
E 46	BONNET HEX NUT	8	STEEL	SAE J995	GR. 8 GALV.	
47	STEM O-RING	2	RUBBER	D-2000	BUNA N	
E 48	TRAFFIC FLANGE HEX NUT	8	STEEL	SAE J995	GR. 5 GALV.	
49	DRAIN RING HOUSING O-RING	1	RUBBER	D-2000	BUNA N	
50	SLEEVE	1	COPPER	B-75	ALLOY 122	
E 51	UPPER STEM PIN	1	STAINLESS STEEL	A-276	303	
E 52	SHOE HEX CAP SCREW	6	STEEL	SAE J429	GR. 5 GALV.	
E 53	SHOE	1	DUCTILE IRON	A536	GR. 65-45-12	GR. 70-50-05
* 54	PIPE GLAND	1	CAST IRON	A-126	CLASS B	
55	TOP SEAT O-RING	1	RUBBER	D-2000	BUNA N	
E 56	SHOE HEX NUT	6	STEEL	SAE-J995	GR. 5 GALV.	
* 57	MECH. JOINT GASKET	1	RUBBER	D-2000	NATURAL	
E* 58	T-HEAD BOLT 3/4x3.50	6	STEEL	A-242	TYPE 1	A-588
E* 59	HEX NUT 3/4"	6	STEEL	A-242	TYPE 1	A-588
E* 60	BURY TAG	1	STAINLESS STEEL	A-240	304	

* NOT SHOWN

DRWTR: JEH CHKTR: JMG APP: JMG E.O. NUMBER:	INCH INITIAL RELEASE: 7-19-01 MACH. .006/.016 125° FRACTIONS ±1/64 DECIMALS 2 PL ±.025 3 PL ±.010 ANGLES ±1°	TOLERANCES - MACHINING UNLESS OTHERWISE NOTED BREAK EDGES FINISH SURFACES PURCH. FINISH REF. NO. SCALE N.T.S. STK. NO.	THIRD ANGLE PROJECTION PURCH. FINISH REF. NO. SCALE N.T.S. STK. NO.
MATL. SEE TABLE DESCOR: 5 1/4" A425 SUPER CENTURION "350" W/ TWO PUMPER NOZZLES		REVISION: E	NUMBER: FH 105 SHEET 1 OF 1