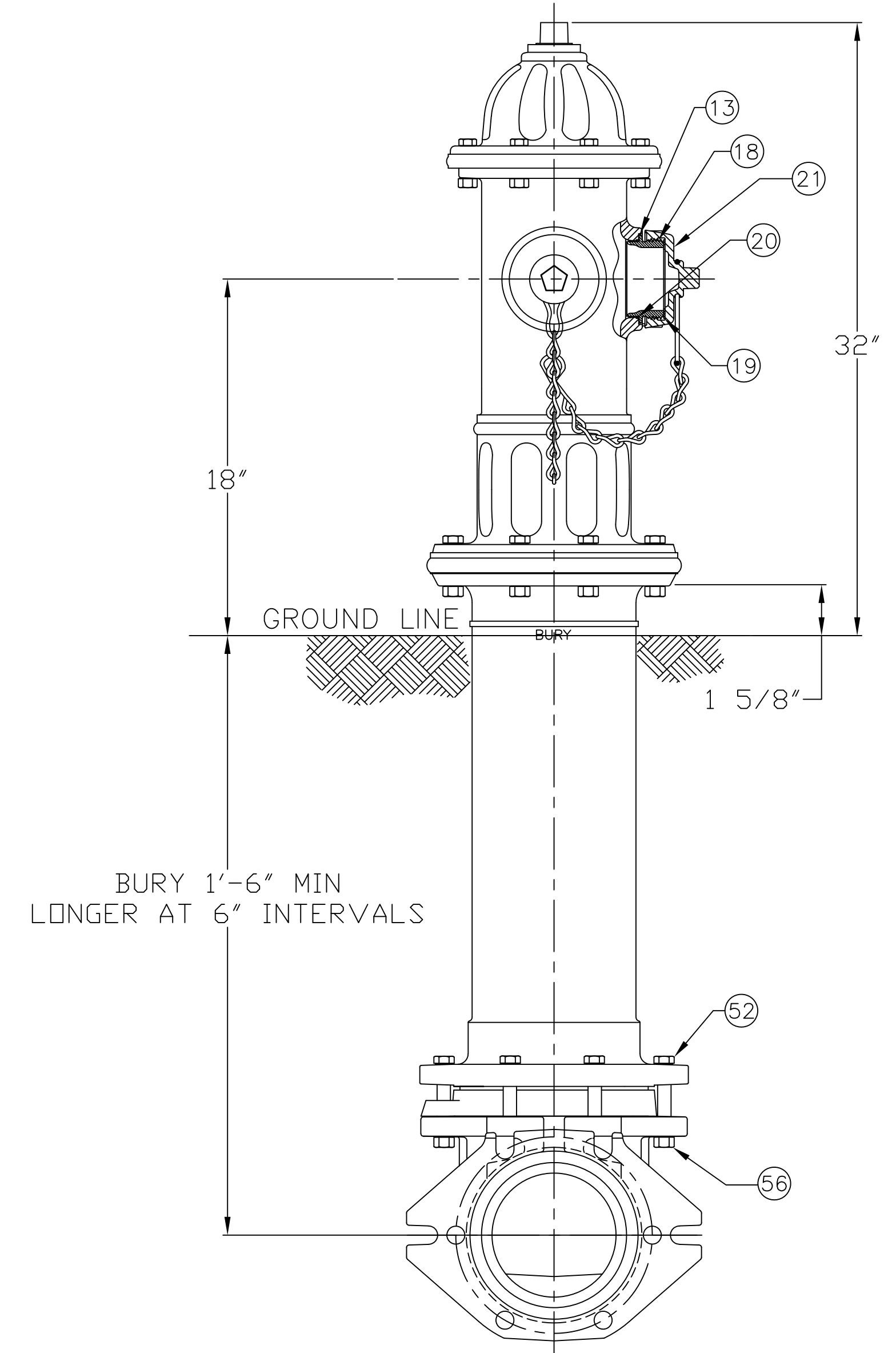


4 1/2" A433HP & 5 1/4" A435HP CENTURION UL-FM w/ TWO HOSE NOZZLES - 350 P.S.I. W.P. - 700 P.S.I. TEST, 2019 STYLE.

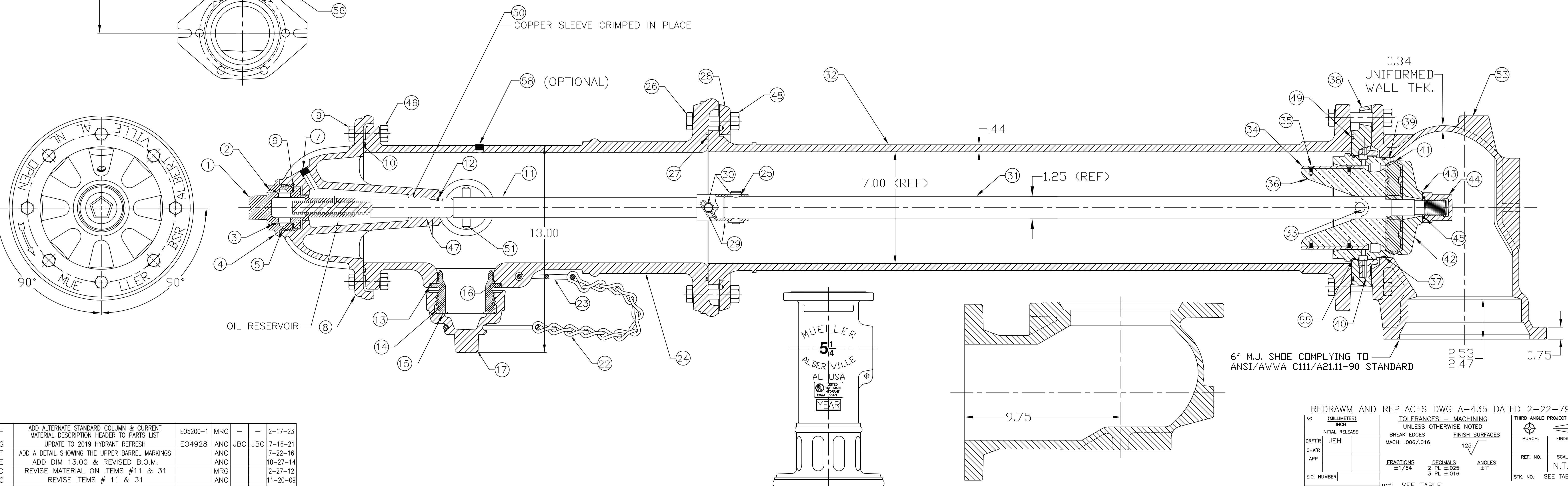


PARTS LIST						
ITEM	DESCRIPTION	REQ'D	MATERIAL	A.S.T.M.	CURRENT MATERIAL DESCRIPTION	ALTERNATE STANDARD
1	OPERATING NUT	1	BRONZE	B-62	C83600	B584 C87850 OR C87600
2	WIPER RING	1	RUBBER	D-2000	EPDM	
3	HOLD DOWN NUT O-RING	1	RUBBER	D-2000	BUNA N	
4	HOLD DOWN NUT	1	BRONZE	B-62	C83600	B584 C87850 OR C87600
5	BONNET O-RING	1	RUBBER	D-2000	BUNA N	
6	ANTI-FRICTION WASHER	1	CELCON		GRADE M90-04	
7	OIL FILLER PLUG	1	BRASS	B-16	ALLOY 360	
8	BONNET	1	CAST IRON	A-126	CLASS B	
9	HEX BOLT	8	STEEL	SAE J429	GR 5 GALV.	
10	TOP UPPER BARREL O-RING	1	RUBBER	D-2000	BUNA N	
11	UPPER STEM	1	CARBON STEEL	A-576	GR 1144T	
12	STEM O-RING	1	RUBBER	D-2000	BUNA N	
13	NOZZLE LOCK	2	STAINLESS STEEL	A-276	305 OR 410	
14	HOSE NOZZLE	1	BRASS	B-584	C89833	B584 C87850 OR C87600
15	HOSE NOZZLE CAP GASKET	1	RUBBER	D-2000	NEOPRENE	
16	HOSE NOZZLE O-RING	1	RUBBER	D-2000	BUNA N	
17	HOSE NOZZLE CAP	1	CAST IRON	A-126	CLASS B	
18	HOSE NOZZLE	1	BRASS	B-584	C89833	B584 C87850 OR C87600
19	HOSE NOZZLE CAP GASKET	1	RUBBER	D-2000	NEOPRENE	
20	HOSE NOZZLE O-RING	1	RUBBER	D-2000	BUNA N	
21	HOSE NOZZLE CAP	1	CAST IRON	A-126	CLASS B	
22	CAP CHAIN	2	STEEL		ELECTRO GALV.	
23	CHAIN HOOK	1	STEEL		ELECTRO GALV.	
24	UPPER BARREL	1	CAST IRON	A-126	CLASS B	
25	TRAFFIC STEM COUPLING	1	STAINLESS STEEL	A-890	1.5% SILICON MAX.	
26	TRAFFIC FLANGE BOLT	8	STEEL	SAE J429	GR 5 GALV.	
27	BOTTOM UPPER BARREL O-RING	1	RUBBER	D-2000	BUNA N	
28	TRAFFIC FLANGE	2	CAST IRON	A-126	CLASS B	
29	REUSABLE COTTER PIN	2	STAINLESS STEEL		18-8	
30	CLEVIS PIN	2	STAINLESS STEEL	A-276	300 SERIES	

SEE CAT. RECORD FOR RESPECTIVE PARTS OR SUB. ASS'YS

ITEM	DESCRIPTION	REQ'D	MATERIAL	A.S.T.M.	CURRENT MATERIAL DESCRIPTION	ALTERNATE STANDARD
31	LOWER STEM	1	CARBON STEEL	A-576	GRADE 1144T	
32	LOWER BARREL	1	CAST IRON	A-126	CLASS B	
33	STEM PIN	1	STAINLESS STEEL	A-276	300 SERIES	
34	DRAIN VALVE FACING	2	H.D. POLYETHYLENE		LS 5660-00	
35	DRAIN VALVE FACING SCREW	4	STAINLESS STEEL	A-276	300 SERIES	
36	UPPER VALVE PLATE	1	BRASS	B-584	C89833	B584 C87850 OR C87600
37	BOTTOM SEAT O-RING	1	RUBBER	D-2000	BUNA N	
38	DRAIN RING	1	BRONZE	B-62	C83600	B584 C87850 OR C87600
39	SEAT RING	1	BRASS	B-584	C89833	B584 C87850 OR C87600
40	DRAIN RING HOUSING	1	CAST IRON	A-126	CLASS B	
41	MAIN VALVE	1	RUBBER	D-2000	NATURAL	
42	LOWER VALVE PLATE	1	CAST IRON	A-126	CLASS B	
43	LOCK WASHER	1	STAINLESS STEEL	A-276	304	
44	VALVE NUT	1	CAST IRON	A-126	CLASS B	
45	VALVE NUT SEAL	1	RUBBER		NATURAL	
46	HEX NUT	8	STEEL	SAE J995	GR 8 GALV.	
47	STEM O-RING	2	RUBBER	D-2000	BUNA N	
48	TRAFFIC FLANGE NUT	8	STEEL	SAE J995	GR 5 GALV.	
49	DRAIN RING HOUSING O-RING	1	RUBBER	D-2000	BUNA N	
50	SLEEVE	1	COPPER	B-75	ALLOY 122	
51	UPPER STEM PIN	1	STAINLESS STEEL	A-276	303	
52	HEX BOLT	6	STEEL	SAE J429	GR 5 GALV.	
53	SHOE	1	DUCTILE IRON	A536	65-45-12	GR 70-50-05
* 54	PIPE GLAND	1	CAST IRON	A-126	CLASS B	
55	TOP SEAT O-RING	1	RUBBER	D-2000	BUNA N	
56	SHOE HEX NUT	6	STEEL	SAE J995	GR 5 GALV.	
* 57	MECH. JOINT GASKET	1	RUBBER		NATURAL	
* 58	T-HEAD BOLT 3/4x3.50	6	STEEL	A242/A588	TYPE 1	
* 59	HEX NUT 3/4	6	STEEL	A242/A588	TYPE 1	
* 60	PIPE PLUG	1	CAST IRON	A-126	CLASS B	
* 61	BURY TAG	1	STAINLESS STEEL	A-240	304	

\* NOT SHOWN



DWG. FH-111

REV.	DESCRIPTION	REF.	DRFTK	CHKR	APP	DATE
H	ADD ALTERNATE STANDARD COLUMN & CURRENT MATERIAL DESCRIPTION HEADER TO PARTS LIST	E05200-1	MRG			2-17-23
G	UPDATE TO 2019 HYDRANT REFRESH	E04928	ANC	JBC	JBC	7-16-21
F	ADD A DETAIL SHOWING THE UPPER BARREL MARKINGS		ANC			7-22-16
E	ADD DIM 13.00 & REVISED B.O.M.		ANC			10-27-14
D	REVISE MATERIAL ON ITEMS #11 & 31		MRG			2-27-12
C	REVISE ITEMS # 11 & 31		ANC			11-20-09
B	ADD OPTIONAL FLANGE SHOE		ANC			4-25-08
A	ADDED A433 HYDRANT AND REVISED ITEMS 13-17		ANC			5-2-07

REDRAWN AND REPLACES DWG A-435 DATED 2-22-79

SCALE: N.T.S.	THIRD ANGLE PROJECTION
REF. NO. SEE TABLE	STK. NO. SEE TABLE
MATERIAL: SEE TABLE	
TOLERANCES - MACHINING UNLESS OTHERWISE NOTED	
BREAK EDGES FINISH SURFACES	
MACH. .006/.016	
FRACTIONS ±1/64 DECIMALS 2 PL ±.025 3 PL ±.016 ANGLES ±1°	
INITIAL RELEASE	DRFTK: JEH
CHKR:	APP:
E.O. NUMBER:	REVISION: H
MUELLER	NUMBER: FH-111
DESCRIPTION: 1/2" A433 & 5 1/4" A435 CENTURION W/TWO HOSE NOZZLES	SHEET: 1 OF 1