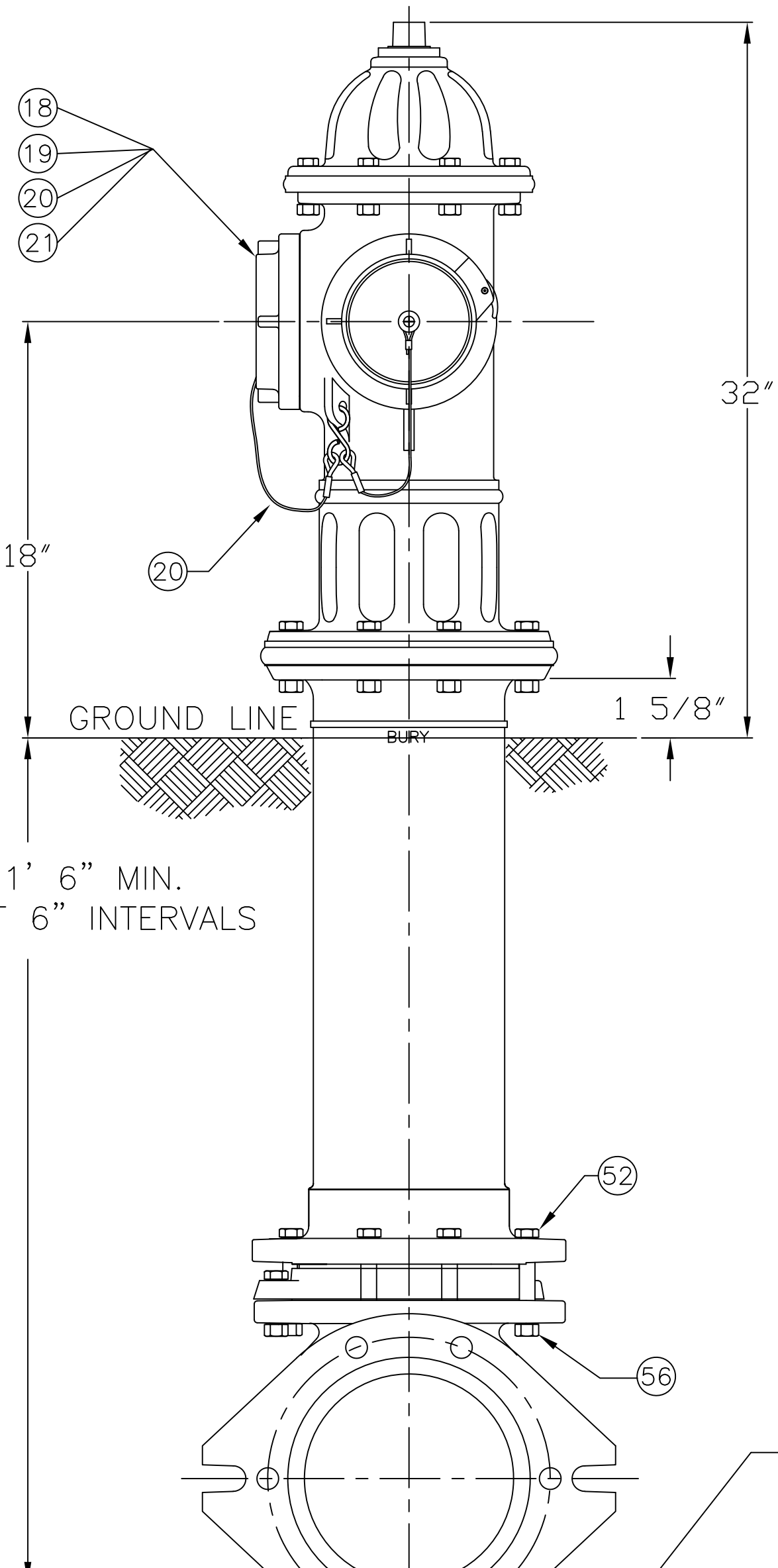
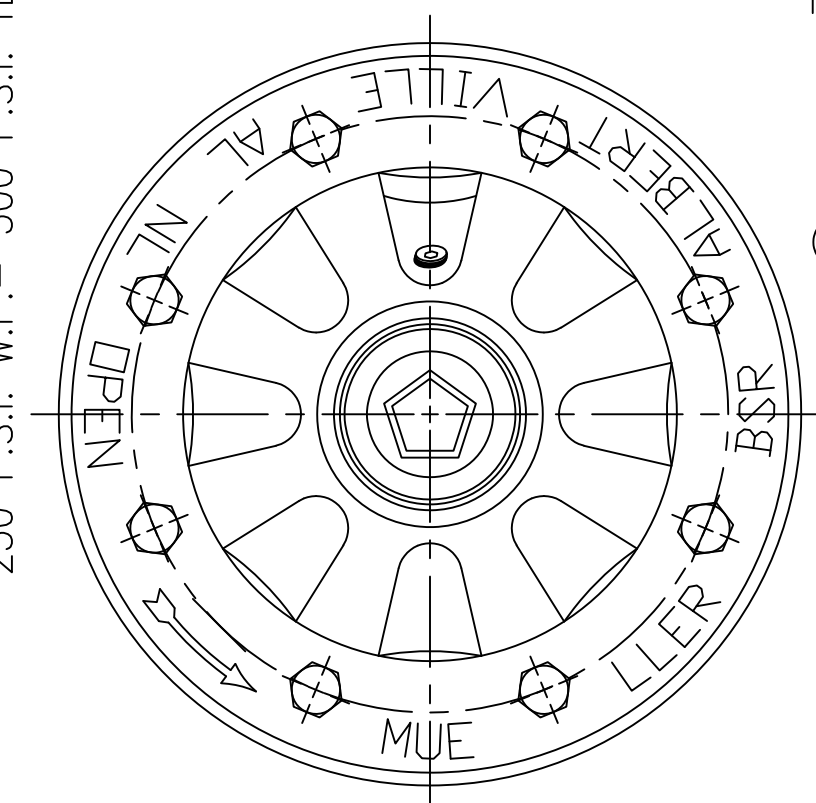


DWG. FH 198
 5 1/4" A425 SUPER CENTURION W/ TWO PUMPER NOZZLES (STORZ CONNECTIONS) W/ 8" MJ SHOE
 250 P.S.I. W.P. - 500 P.S.I. TEST, 2019 STYLE



BURY 1' 6" MIN.
 LONGER AT 6" INTERVALS



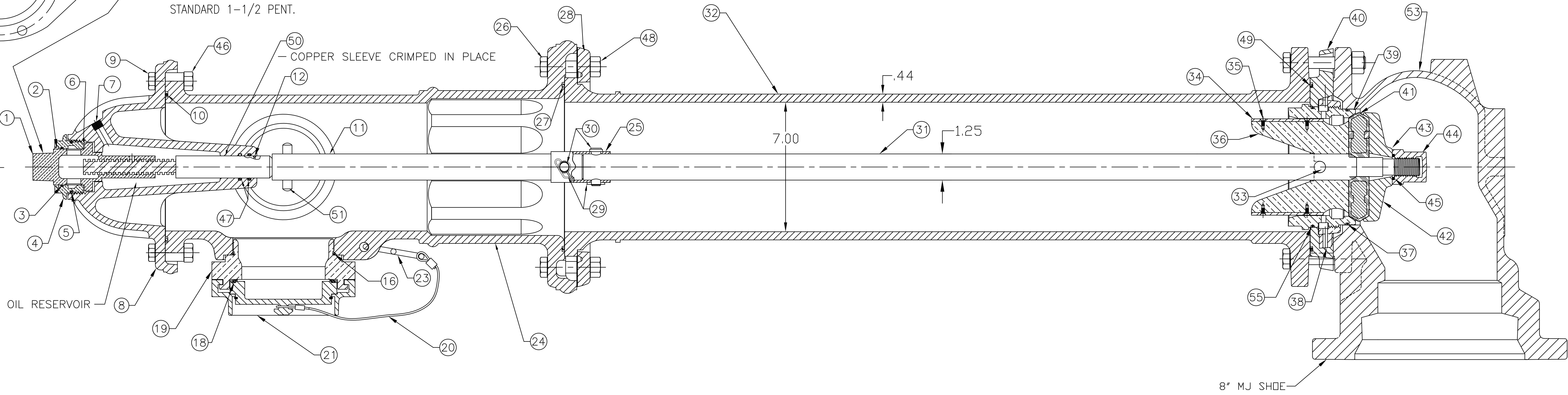
OPEN LEFT
 APPROXIMATELY 17 1/4 TURNS TO OPEN
 OP. NUT DIMENSIONS PER CUSTOMER SPECS.
 STANDARD 1-1/2 PENT.

PARTS LIST						
ITEM	DESCRIPTION	REQ'D	MATERIAL	A.S.T.M.	CURRENT MATERIAL DESCRIPTION (F)	ALTERNATE STANDARD (F)
1	OPERATING NUT	1	BRONZE	B-62	C83600	B584 C87850 OR C87600
2	WIPER RING	1	RUBBER	D-2000	EPDM	
3	HOLD DOWN NUT O-RING	1	RUBBER	D-2000	BUNA N	
4	HOLD DOWN NUT	1	BRONZE	B-62	C83600	B584 C87850 OR C87600
5	BONNET O-RING	1	RUBBER	D-2000	BUNA N	
6	ANTI-FRICTION WASHER	1	CELCON		GRADE M90-04	
7	OIL FILLER PLUG	1	BRASS	B-16	ALLOY 360	
8	BONNET	1	CAST IRON	A-126	CLASS B	
9	BONNET HEX BOLT	8	STEEL	SAE J429	GR 5 ELECTRO GALV.	
10	TOP UPPER BARREL O-RING	1	RUBBER	D-2000	BUNA N	
11	UPPER STEM	1	CARBON STEEL	A-576	GR 1144T	
12	STEM O-RING	1	RUBBER	D-2000	BUNA N	
13						
14						
15						
16	PUMPER NOZZLE O-RING	2	RUBBER	D-2000	BUNA N	
17						
18	STORZ CAP GASKET	2	RUBBER	D-2000		
19	5" STORZ PUMPER NOZZLE	2	BRASS	B-763	C99500	
20	STORZ CAP CABLE	2	STAINLESS STEEL			
21	5" STORZ PUMPER CAP	2	ALUMINUM			
22						
23	CHAIN HOOK	1	STEEL		ELECTRO GALV.	
24	UPPER BARREL	1	CAST IRON	A-126	CLASS B	
25	TRAFFIC STEM COUPLING	1	STAINLESS STEEL	A-890	1.5% SILICON MAX.	
26	TRAFFIC FLANGE BOLT	8	STEEL	SAE J429	GR 5 ELECTRO GALV.	
27	BOTTOM UPPER BARREL O-RING	1	RUBBER	D-2000	BUNA N	
28	TRAFFIC FLANGE	1	CAST IRON	A-126	CLASS B	
29	REUSABLE COTTER PIN	2	STAINLESS STEEL		18-8	
30	CLEVIS PIN	2	STAINLESS STEEL	A-276	300 SERIES	

SEE CAT. RECORD FOR RESPECTIVE PARTS OR SUB. ASS'YS
 NOTE: SIZE AND STYLE OF OPERATING NUT, SHOE SIZE, AND
 THREADING OF NOZZLES IS PER CUSTOMER SPECS.

ITEM	DESCRIPTION	REQ'D	MATERIAL	A.S.T.M.	CURRENT MATERIAL DESCRIPTION (F)	ALTERNATE STANDARD (F)
31	LOWER STEM	1	CARBON STEEL	A-576	GRADE 1144T	
32	LOWER BARREL	1	CAST IRON	A-126	CLASS B	
33	STEM PIN	1	STAINLESS STEEL	A-276	300 SERIES	
34	DRAIN VALVE FACING	2	H.D. POLYETHYLENE		LS 5660-00	
35	DRAIN VALVE FACING SCREW	4	STAINLESS STEEL	A-276	300 SERIES	
36	UPPER VALVE PLATE	1	BRASS	B-584	C89833	B584 C87850 OR C87600
37	BOTTOM SEAT O-RING	1	RUBBER	D-2000	BUNA N	
38	DRAIN RING	1	BRONZE	B-62	C83600	B584 C87850 OR C87600
39	SEAT RING	1	BRASS	B-584	C89833	B584 C87850 OR C87600
40	DRAIN RING HOUSING	1	CAST IRON	A-126	CLASS B	
41	ENCAPSULATED MAIN VALVE	1	RUBBER	D-2000	NATURAL	
42	LOWER VALVE PLATE	1	CAST IRON	A-126	CLASS B	
43	LOCK WASHER	1	STAINLESS STEEL	A-276	304	
44	VALVE NUT	1	CAST IRON	A-126	CLASS B	
45	VALVE NUT SEAL	1	RUBBER		NATURAL	
46	BONNET HEX NUT	8	STEEL	SAE J995	GR 8 ELECTRO GALV.	
47	STEM O-RING	2	RUBBER	D-2000	BUNA N	
48	TRAFFIC FLANGE NUT	8	STEEL	SAE J995	GR 5 ELECTRO GALV.	
49	DRAIN RING HOUSING O-RING	1	RUBBER	D-2000	BUNA N	
50	SLEEVE	1	COPPER	B-75	ALLOY 122	
51	UPPER STEM PIN	1	STAINLESS STEEL	A-276	303	
52	SHOE HEX BOLT	6	STEEL	SAE J429	GR 5 ELECTRO GALV.	
53	SHOE	1	DUCTILE IRON	A536	65-45-12	GR 70-50-05
* 54	BURY TAG	1	STAINLESS STEEL	A-240	304	
55	TOP SEAT O-RING	1	RUBBER	D-2000	BUNA N	
56	SHOE HEX NUT	6	STEEL	SAE J995	GR 5 ELECTRO GALV.	

* NOT SHOWN



REV.	DESCRIPTION	REF.	DRFTR	CHK'R	APP	DATE
F	ADD ALTERNATE STANDARDS COLUMN & CURRENT MATERIAL DESCRIPTION HEADER	E05020	MRG	-	-	2-6-23
E	UPDATE TO 2019 HYDRANT REFRESH	E05045	ANC	JBC	JBC	3-22-22
D	REVISED ITEMS #1, 4, 36, 38 & 39		JMG			11-8-13
C	REVISE MATERIAL ON ITEM #19		ANC			1-23-13
B	REVISED ITEMS #11 & 31		MRG			3-13-12
A	REVISED ITEMS #11 & 31		ANC			12-2-09

(MILLIMETER) INCH INITIAL RELEASE DRFTR MRG 7-08-08 CHK'R APP E.O. NUMBER	TOLERANCES - MACHINING UNLESS OTHERWISE NOTED BREAK EDGES FINISH SURFACES MACH. .006/016 125 FRACTIONS ±1/64 DECIMALS 2 PL ±.025 3 PL ±.010 ANGLES ±1°	THIRD ANGLE PROJECTION PURCH. FINISH REF. NO. SCALE N.T.S. STK. NO.
MUELLER		MAT'L SEE TABLE DESCR. 5 1/4" A425 SUPER CENTURION W/ TWO PUMPER NOZZLES W/ 8" MJ SHOE (STORZ CONNECTIONS) REVISION NUMBER F FH 198 SHEET 1 OF 1