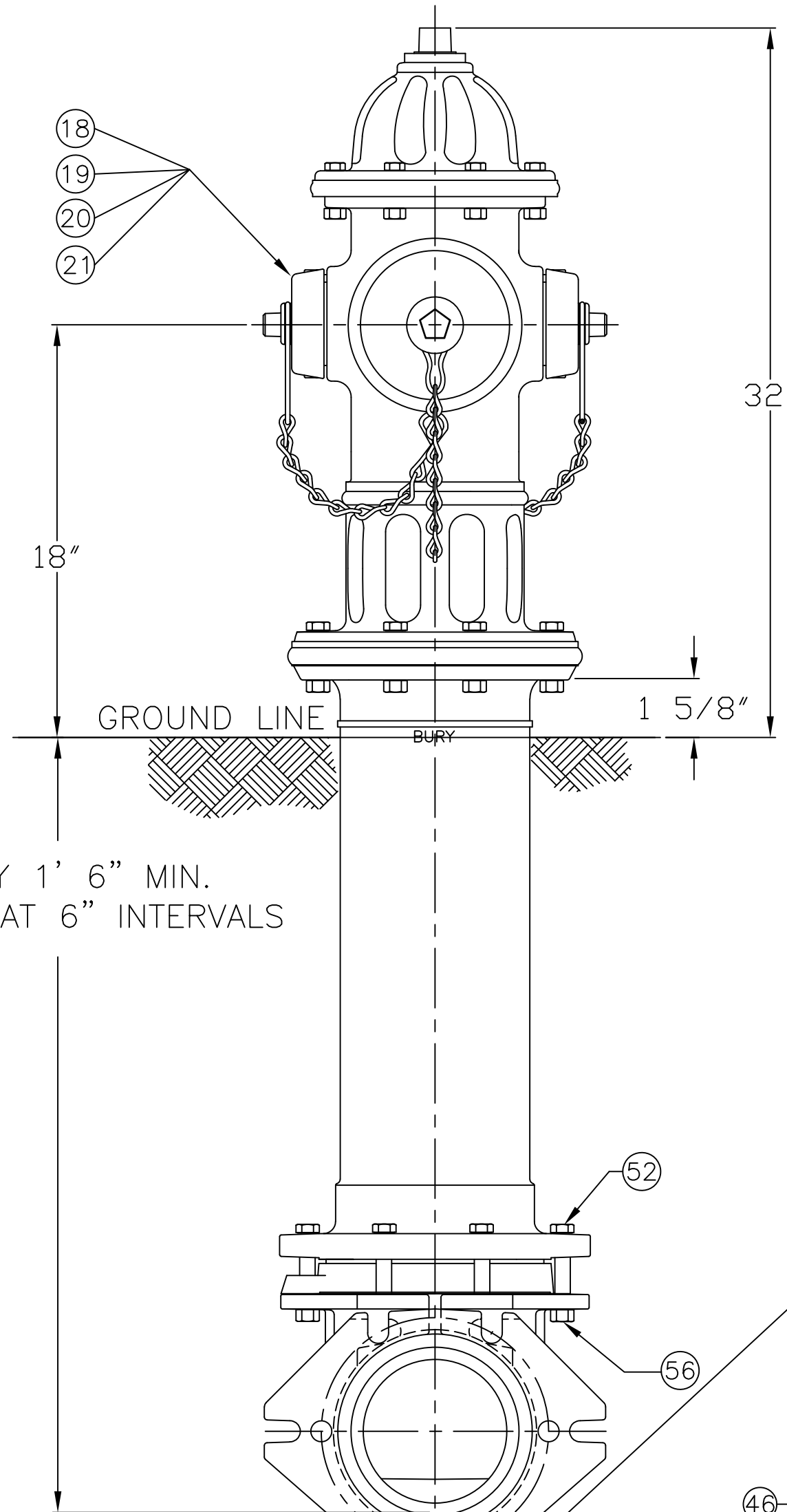


5 1/4" A459 SUPER CENTURION "250" W/ TWO HOSE NOZZLES
& TWO PUMPER NOZZLES - 350 P.S.I. W.P. - 700 P.S.I. TEST, 2019 STYLE.

DWG. FH 449



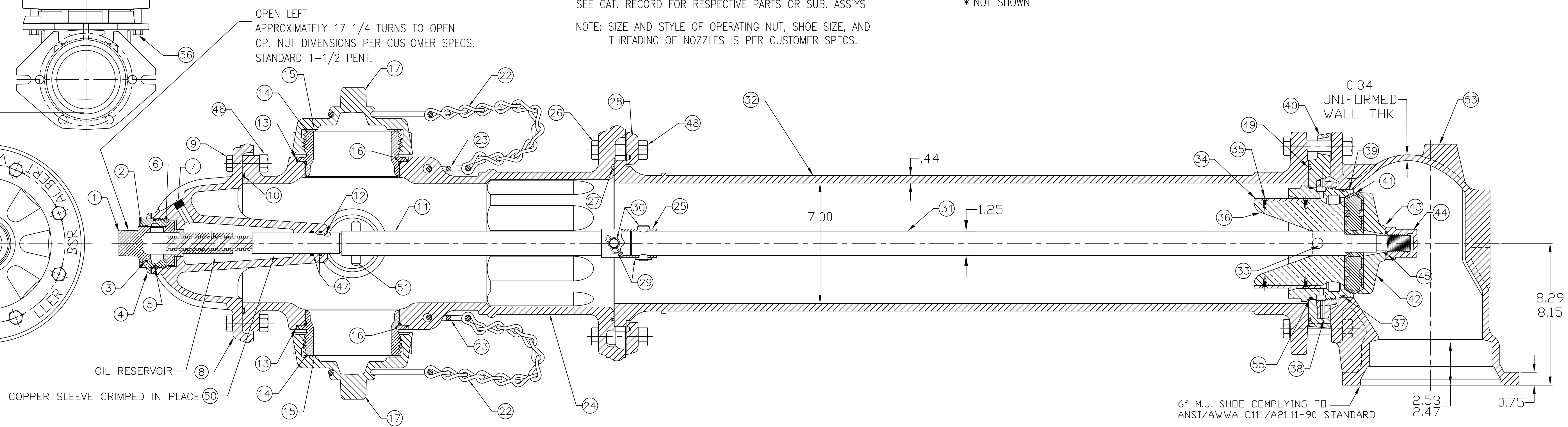
BURY 1' 6" MIN.
LONGER AT 6" INTERVALS

PARTS LIST						
ITEM	DESCRIPTION	REQ'D	MATERIAL	A.S.T.M.	CURRENT MATERIAL DESCRIPTION (C)	ALTERNATE STANDARD (C)
1	OPERATING NUT	1	BRONZE	B-62	ALLOY C83600	B584 C87850 OR C87600
2	WIPER RING	1	RUBBER	D-2000	EPDM	
3	HOLD DOWN NUT O-RING	1	RUBBER	D-2000	BUNA N	
4	HOLD DOWN NUT	1	BRONZE	B-62	ALLOY C83600	B584 C87850 OR C87600
5	BONNET O-RING	1	RUBBER	D-2000	BUNA N	
6	ANTI-FRICTION WASHER	1	CELCON		GRADE M90-04	
7	OIL FILLER PLUG	1	BRASS	B-16	ALLOY 360	
8	BONNET	1	CAST IRON	A-126	CLASS B	
9	BONNET HEX CAP SCREW	8	STEEL	SAE J429	GR 5 GALVANIZED	
10	TOP UPPER BARREL O-RING	1	RUBBER	D-2000	BUNA N	
11	UPPER STEM	1	CARBON STEEL	A-576	GR 1144T	
12	STEM O-RING	1	RUBBER	D-2000	BUNA N	
13	NOZZLE LOCK	4	STAINLESS STEEL	A-276	305 OR 410	
14	PUMPER NOZZLE	2	BRASS	B-584	ALLOY C89833	B584 C87850 OR C87600
15	PUMPER NOZZLE CAP GASKET	2	RUBBER	D-2000	NEOPRENE	
16	PUMPER NOZZLE O-RING	2	RUBBER	D-2000	BUNA N	
17	PUMPER NOZZLE CAP	2	CAST IRON	A-126	CLASS B	
18	HOSE NOZZLE	2	BRASS	B-584	ALLOY C89833	B584 C87850 OR C87600
19	HOSE NOZZLE CAP GASKET	2	RUBBER	D-2000	NEOPRENE	
20	HOSE NOZZLE O-RING	2	RUBBER	D-2000	BUNA N	
21	HOSE NOZZLE CAP	2	CAST IRON	A-126	CLASS B	
22	CAP CHAIN	4	STEEL		ELECTRO GALV.	
23	CHAIN HOOK	2	STEEL		ELECTRO GALV.	
24	UPPER BARREL	1	CAST IRON	A-126	CLASS B	
25	TRAFFIC STEM COUPLING	1	STAINLESS STEEL	A-890	1.5% SILICON MAX.	
26	TRAFFIC FLANGE HEX CAP SCREW	8	STEEL	SAE J429	GR 5 GALVANIZED	
27	BOTTOM UPPER BARREL O-RING	1	RUBBER	D-2000	BUNA N	
28	TRAFFIC FLANGE	1	CAST IRON	A-126	CLASS B	
29	REUSABLE COTTER PIN	2	STAINLESS STEEL		18-8	
30	CLEVIS PIN	2	STAINLESS STEEL	A-276	300 SERIES	

ITEM	DESCRIPTION	REQ'D	MATERIAL	A.S.T.M.	CURRENT MATERIAL DESCRIPTION (C)	ALTERNATE STANDARD (C)
31	LOWER STEM	1	CARBON STEEL	A-576	GRADE 1144T	
32	LOWER BARREL	1	CAST IRON	A-126	CLASS B	
33	STEM PIN	1	STAINLESS STEEL	A-276	300 SERIES	
34	DRAIN VALVE FACING	2	H.D. POLYETHYLENE		LS 5660-00	
35	DRAIN VALVE FACING SCREW	4	STAINLESS STEEL	A-276	300 SERIES	
36	UPPER VALVE PLATE	1	BRASS	B-584	ALLOY C89833	B584 C87850 OR C87600
37	BOTTOM SEAT O-RING	1	RUBBER	D-2000	BUNA N	
38	DRAIN RING	1	BRONZE	B-62	ALLOY C83600	B584 C87850 OR C87600
39	SEAT RING	1	BRASS	B-584	ALLOY C89833	B584 C87850 OR C87600
40	DRAIN RING HOUSING	1	CAST IRON	A-126	CLASS B	
41	ENCAPSULATED MAIN VALVE	1	RUBBER	D-2000	NATURAL	
42	LOWER VALVE PLATE	1	CAST IRON	A-126	CLASS B	
43	LOCK WASHER	1	STAINLESS STEEL	A-276	304	
44	VALVE NUT	1	CAST IRON	A-126	CLASS B	
45	VALVE NUT SEAL	1	RUBBER		NATURAL	
46	BONNET HEX NUT	8	STEEL	SAE J995	GR 8 GALVANIZED	
47	STEM O-RING	2	RUBBER	D-2000	BUNA N	
48	TRAFFIC FLANGE HEX NUT	8	STEEL	SAE J995	GR 5 GALVANIZED	
49	DRAIN RING HOUSING O-RING	1	RUBBER	D-2000	BUNA N	
50	SLEEVE	1	COPPER	B-75	ALLOY 122	
51	UPPER STEM PIN	1	STAINLESS STEEL	A-276	303	
52	SHOE HEX CAP SCREW	6	STEEL	SAE J429	GR 5 GALVANIZED	
53	SHOE	1	DUCTILE IRON	A536	GR 65-45-12	GR 70-50-05
* 54	BURY TAG	1	STAINLESS STEEL	A-240	304	
55	TOP SEAT O-RING	1	RUBBER	D-2000	BUNA N	
56	SHOE HEX NUT	6	STEEL	SAE J995	GR 5 GALVANIZED	
* 57	PIPE GLAND	1	CAST IRON	A-126	CLASS B	
* 58	MECH. JOINT GASKET	1	RUBBER	D-2000	NATURAL	
* 59	T-HEAD BOLT 3/4x3.50	6	STEEL	A-242	TYPE 1	A-588
* 60	HEX NUT 3/4"	6	STEEL	A-242	TYPE 1	A-588

* NOT SHOWN

SEE CAT. RECORD FOR RESPECTIVE PARTS OR SUB. ASS'YS
NOTE: SIZE AND STYLE OF OPERATING NUT, SHOE SIZE, AND
THREADING OF NOZZLES IS PER CUSTOMER SPECS.



REV.	DESCRIPTION	REF.	DRFR	CHKR	APP	DATE
C	REVISED PARTS LIST TO INCLUDE ALTERNATE STANDARD AND ADD HEADING CURRENT MATERIAL DESCRIPTION	EO-5200	MRG	-	-	2-7-23
B	REVISED FOR 2019 REFRESH STYLE	EO4826	ANC	JBC	JBC	1-6-21
A	REVISE MATERIAL ON ITEMS# 14,18,36,39		ANC			11-4-13

<small>INCH</small> INITIAL RELEASE DRFR: ANC 5-7-13 CHK'R: APP: E.O. NUMBER:	TOLERANCES - MACHINING UNLESS OTHERWISE NOTED BREAK EDGES FINISH SURFACES MACH. .006/.016 125 FRACTIONS 2 PL. ±.025 3 PL. ±.016 DECIMALS ANGLES ±1/64 ±1°	THIRD ANGLE PROJECTION PURCH. FINISH REF. NO. SCALE N.T.S. STK. NO.
MUeller		MAT'L. SEE TABLE DESCR. 5 1/4" A459 SUPER CENTURION W/ TWO HOSE NOZZLES & TWO PUMPER NOZZLES, 2019 STYLE REVISION C NUMBER FH 449 SHEET 1 OF 1