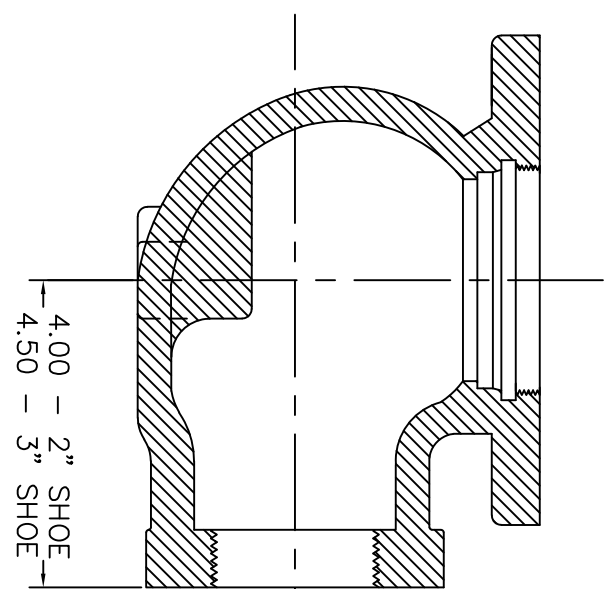
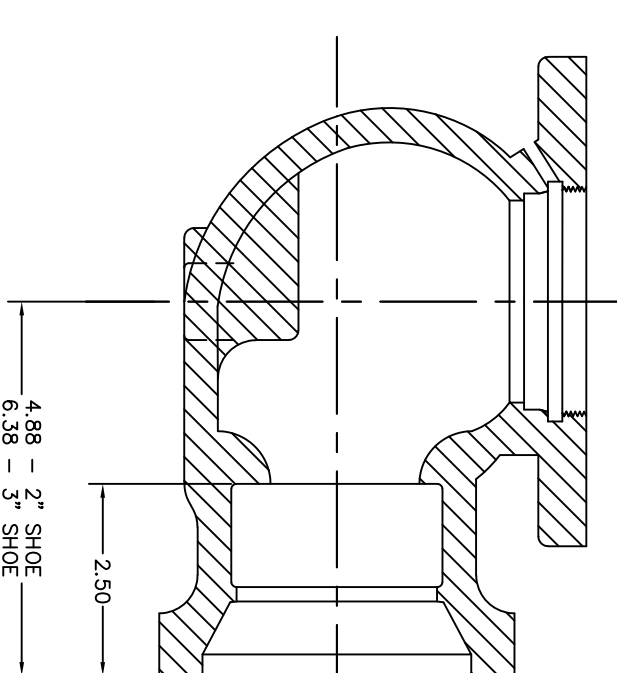


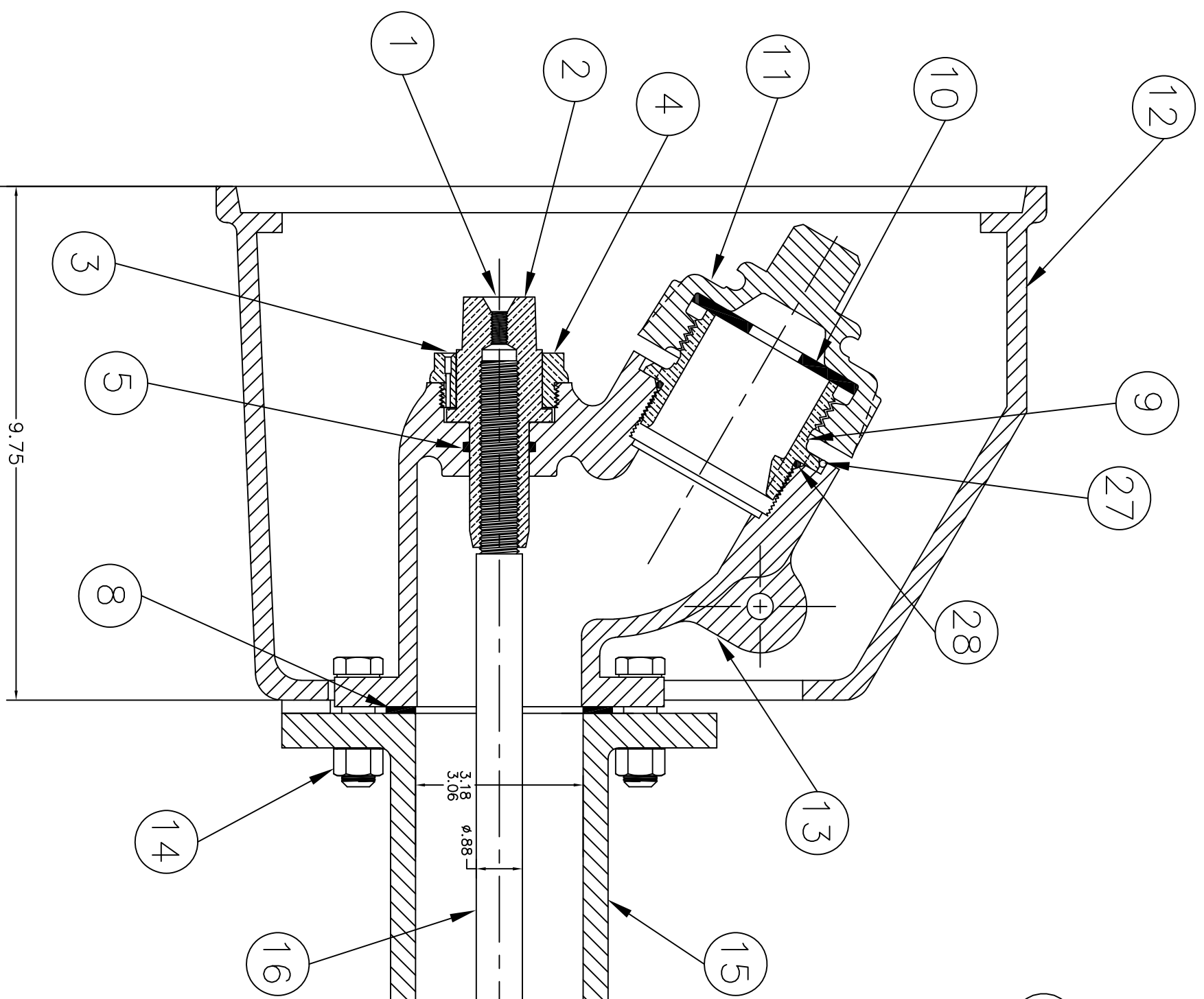
SECTION A-A



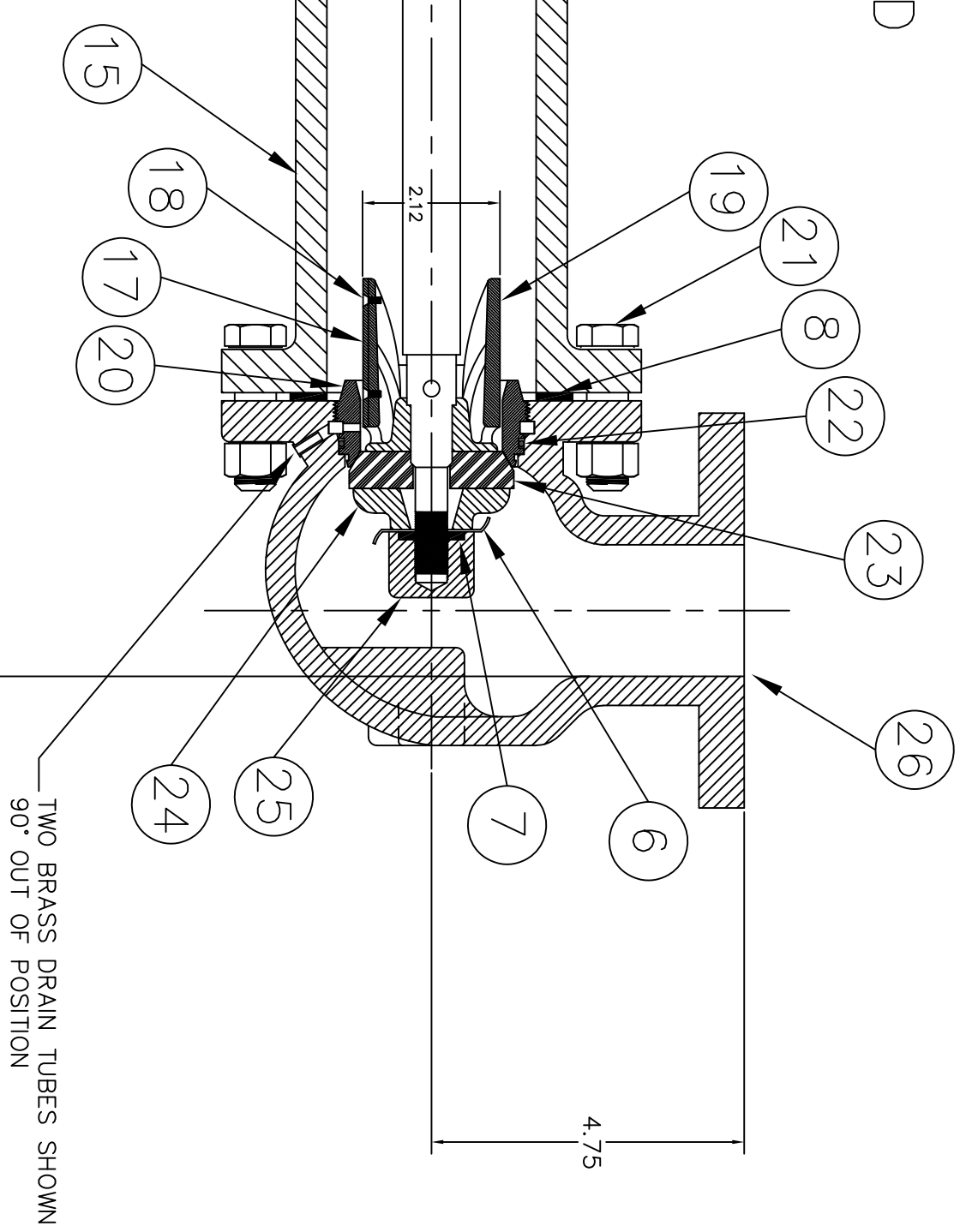
SCREW END SHOE



MU END SHOE



2-1/8" STD FLUSH HYDRANT  
 CATALOG# 412-507928  
 4'-0" BURY  
 (1) 2-1/2" HOSE GAGE 75298  
 1-1/2" PENT OPEN LEFT  
 3" FLANGED SHOE  
 PAINT: (10) MUELLER RED



TWO BRASS DRAIN TUBES SHOWN  
 90° OUT OF POSITION

2'-0" MINIMUM BURY  
 LONGER BY 6" INTERVALS

PARTS LIST

ITEM	DESCRIPTION	REQ'D	MATERIAL	A.S.I.M.	CURRENT MATERIAL (A)	ALTERNATE (A) STANDARD
1	OIL SCREW	1	BRASS	B36	ALLOY 268	
2	OPERATING NUT	1	BRASS	B584	ALLOY C83600	B584 C87850 OR C87600
3	HOLD DOWN NUT SCREW	1	BRASS	B62		
4	HOLD DOWN NUT	1	BRONZE			
5	O-RING SEAL	1	RUBBER		BUNA N	B584 C87850 OR C87600
6	WASHER	1	STAINLESS STEEL		TYPE 302	
7	SEAL	1	RUBBER		R 12	
8	GASKET	2	RUBBER		R49	
9	HOSE NOZZLE	1	BRASS	B584	ALLOY C89833	B584 C87850 OR C87600
10	HOSE NOZZLE GASKET	1	RUBBER	D735	TYPE SC-715	
11	HOSE NOZZLE CAP	1	CAST IRON	A126	CLASS B	
12	FLUSH BOX	1	CAST IRON	A126	CLASS B	
13	UPPER BARREL	1	CAST IRON	A126	CLASS B	
14	FLANGE BOLT	4	STEEL	ASA B18.2		
15	LOWER BARREL	1	CAST IRON	A126	CLASS B	
16	STEM	1	STEEL	A575	M1020	
17	DRAIN VALVE FAGING	1	H.D. POLYETHYLENE		LS 5660-00	
18	DRAIN VALVE SCREW	2	BRASS			B584 C87850 OR C87600
19	UPPER VALVE PLATE	1	BRASS	B62	ALLOY C83600	B584 C87850 OR C87600
20	SEAT RING	1	BRASS	B584	ALLOY C89833	B584 C87850 OR C87600
21	SHOE BOLT	4	STEEL		SAE J429	GRADE 2
22	"O"-RING SEAL	1	RUBBER	D2000		
23	MAIN VALVE	1	RUBBER	D2000		
24	LOWER VALVE PLATE	1	CAST IRON	A126	NATURAL	
25	VALVE NUT	1	DUCTILE IRON	A-536	GR. 65-45-12	GR. 70-50-05
26	SHOE	1	DUCTILE IRON	A-536	GR. 65-45-12	GR. 70-50-05
27	NOZZLE LOCK	1	STAINLESS STEEL	A-276	305 OR 410	
28	"O"-RING SEAL	1	RUBBER	D2000	BUNA N	
29	COVER	1	CAST IRON	A-126	CLASS B	

REV.	DESCRIPTION	REF.	DATE
A	REVISED PARTS LIST TO INCLUDE ALTERNATE STANDARD AND ADD CURRENT MATERIAL DESCRIPTION, REVISE DIMS #2, 6, 14, 16, 17, 19, 21, 23, 26, & 28	EO-5200	2-7-23

<p>QUALIFIED                  INITIAL RELEASE                  DRFT/ANC 7-21-15                  CHK'R                  APP</p>	<p>TOLERANCES - MACHINING                  UNLESS OTHERWISE NOTED                  BREAK EDGES                  MACH. 0.006/0.016                  FRACTIONS 1/16"                  DECIMALS 2 PL. 3.016                  ANGLES ±1°</p>	<p>THIRD ANGLE PROJECTION                  FINISH                  REF. NO.                  SCALE 1:2</p>
<p>Mueller Corp</p>	<p>MAT'L. AS NOTED                  DESCR. 2 1/8" FLUSH MOUNT                  HYDRANT</p>	<p>REVISION                  FH-570                  SHEET 1 OF 1</p>