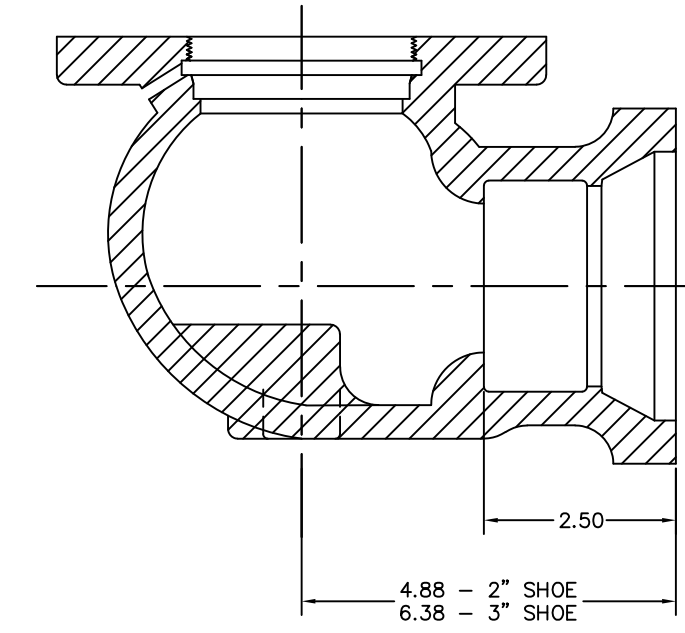
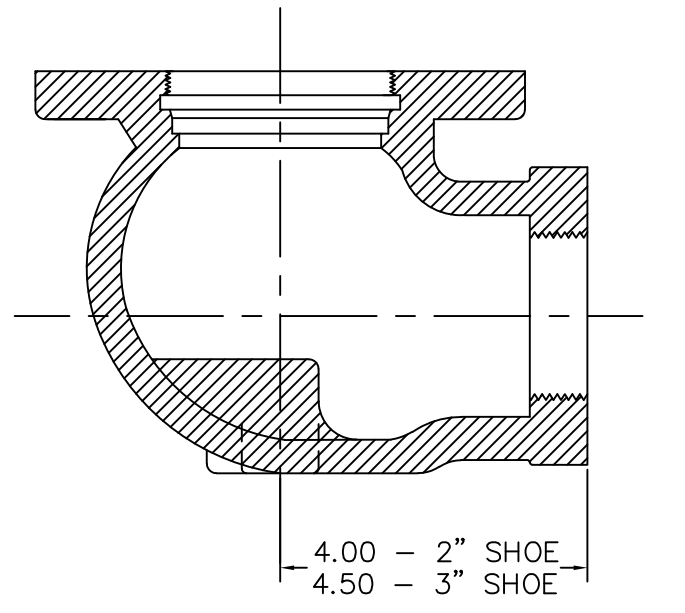
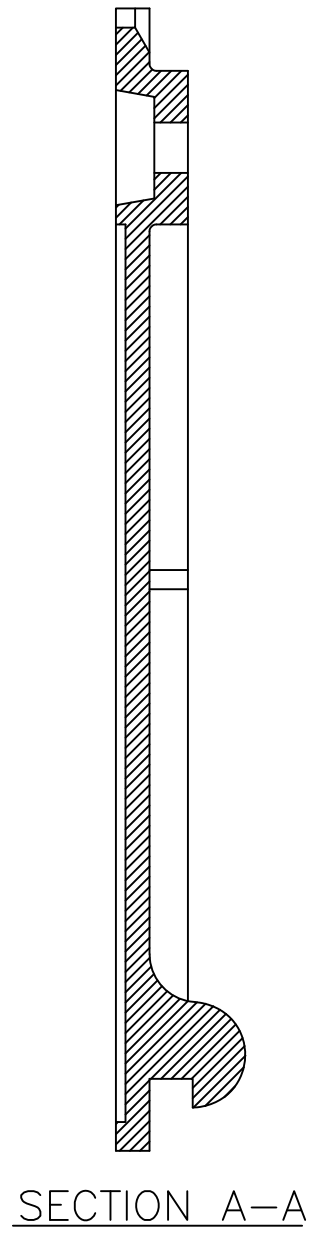
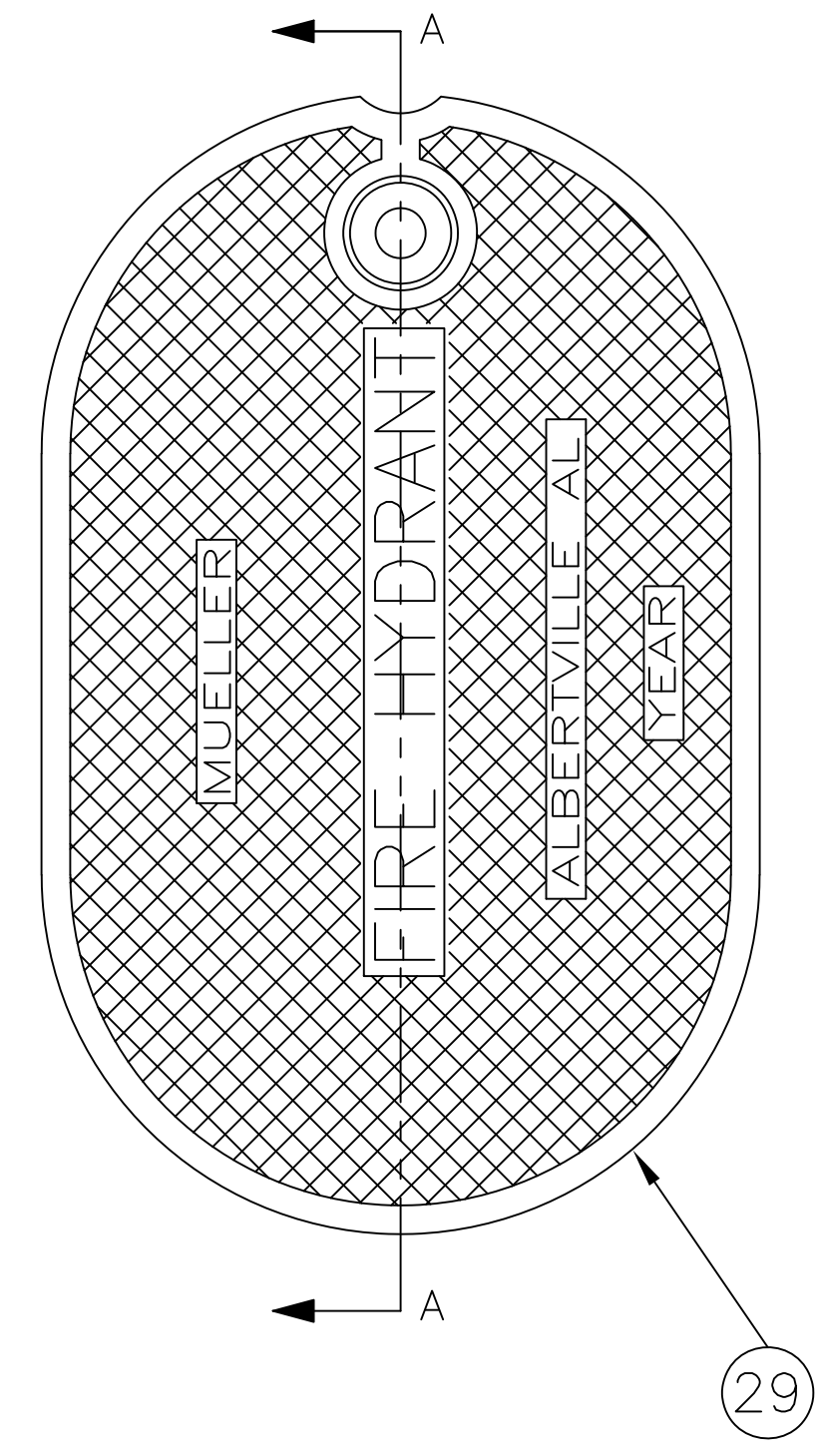
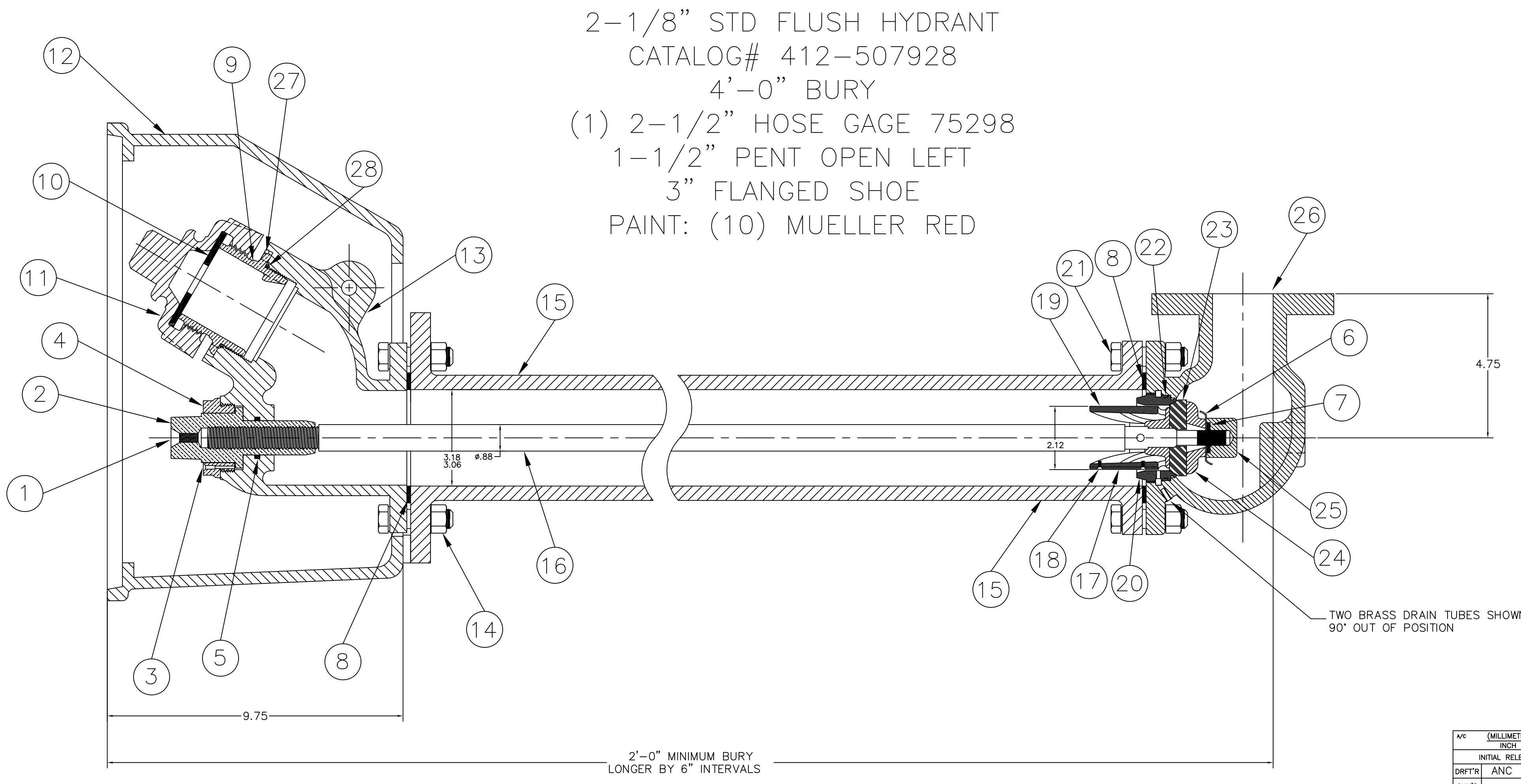
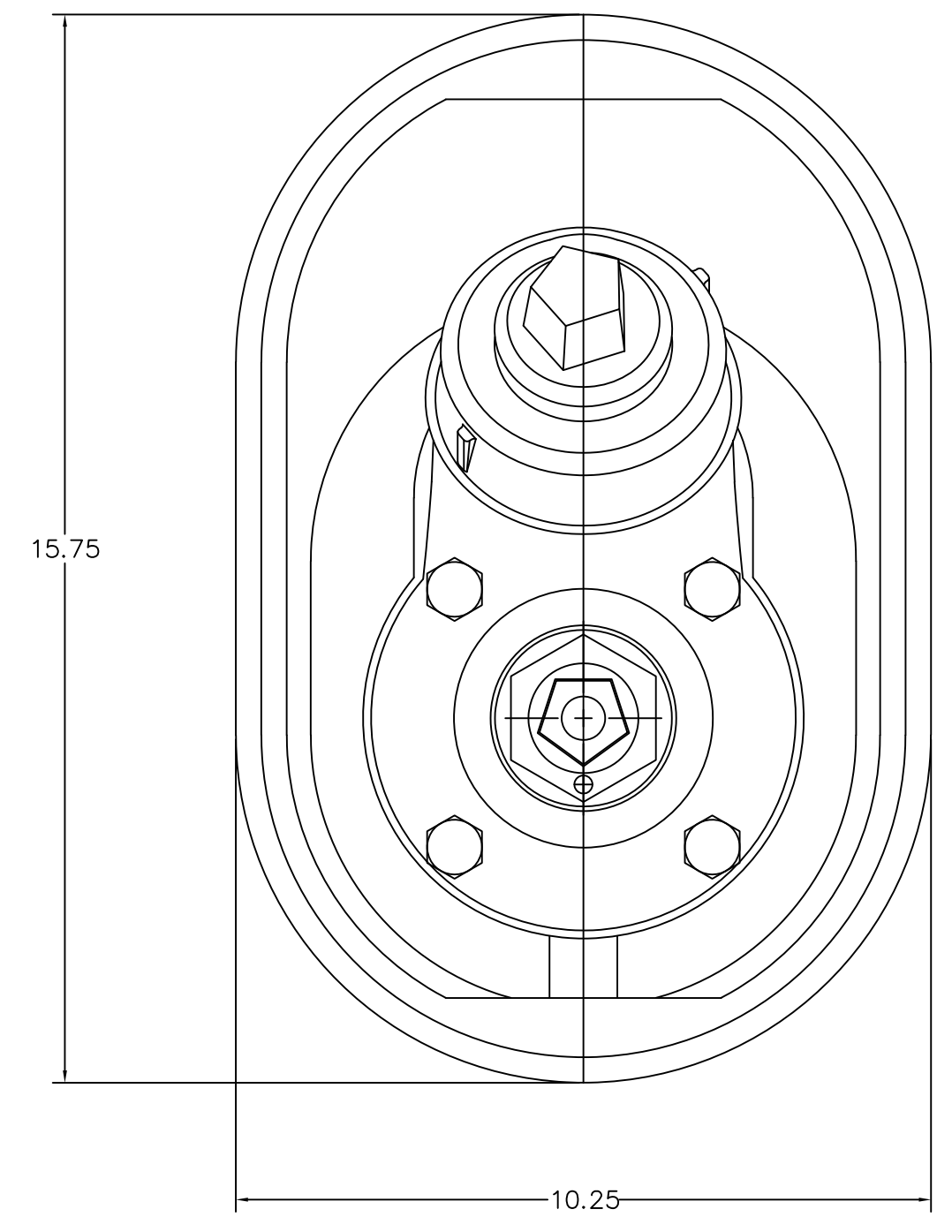


2 1/8" A-412 FIRE HYDRANT-FLUSH TYPE-150 P.S.I. W.P.-300 P.S.I.
NOTE - SIZE & THREADING OF NOZZLE - SIZE & STYLE OF OPERATING NUT & SHOE TO SUIT ORDER



PARTS LIST						
ITEM	DESCRIPTION	REQ'D	MATERIAL	A.S.T.M.	CURRENT MATERIAL DESCRIPTION (A)	ALTERNATE STANDARD (A)
1	OIL SCREW	1	BRASS	B36	ALLOY 268	
2	OPERATING NUT	1	BRASS	B584	ALLOY C83600	B584 C87850 OR C87600
3	HOLD DOWN NUT SCREW	1	BRASS			
4	HOLD DOWN NUT	1	BRONZE	B62		
5	O-RING SEAL	1	RUBBER		BUNA N	B584 C87850 OR C87600
6	WASHER	1	STAINLESS STEEL		TYPE 302	
7	SEAL	1	RUBBER		R 12	
8	GASKET	2	RUBBER		R49	
9	HOSE NOZZLE	1	BRASS	B584	ALLOY C89833	B584 C87850 OR C87600
10	HOSE NOZZLE GASKET	1	RUBBER	D735	TYPE SC-715	
11	HOSE NOZZLE CAP	1	CAST IRON	A126	CLASS B	
12	FLUSH BOX	1	CAST IRON	A126	CLASS B	
13	UPPER BARREL	1	CAST IRON	A126	CLASS B	
14	FLANGE BOLT	4	STEEL		ASA B18.2	
15	LOWER BARREL	1	CAST IRON	A126	CLASS B	
16	STEM	1	STEEL	A575	M1020	
17	DRAIN VALVE FACING	1	H.D. POLYETHYLENE		LS 5660-00	
18	DRAIN VALVE SCREW	2	BRASS			
19	UPPER VALVE PLATE	1	BRASS	B62	ALLOY C83600	B584 C87850 OR C87600
20	SEAT RING	1	BRASS	B584	ALLOY C89833	B584 C87850 OR C87600
21	SHOE BOLT	4	STEEL		SAE J429	GRADE 2
22	"O"-RING SEAL	1	RUBBER	D2000		
23	MAIN VALVE	1	RUBBER	D2000	NATURAL	
24	LOWER VALVE PLATE	1	CAST IRON	A126	CLASS B	
25	VALVE NUT	1	DUCTILE IRON	A-536	GR. 65-45-12	GR. 70-50-05
26	SHOE	1	DUCTILE IRON	A-536	GR. 65-45-12	GR. 70-50-05
27	NOZZLE LOCK	1	STAINLESS STEEL	A-276	305 OR 410	
28	"O"-RING SEAL	1	RUBBER	D2000	BUNA N	
29	COVER	1	CAST IRON	A-126	CLASS B	



2-1/8" STD FLUSH HYDRANT
CATALOG# 412-507928
4'-0" BURY
(1) 2-1/2" HOSE GAGE 75298
1-1/2" PENT OPEN LEFT
3" FLANGED SHOE
PAINT: (10) MUELLER RED

TWO BRASS DRAIN TUBES SHOWN
90° OUT OF POSITION

2'-0" MINIMUM BURY
LONGER BY 6" INTERVALS

FH-570

REV.	DESCRIPTION	REF.	DRFTR	CHK'R	APP.	DATE
A	REVISED PARTS LIST TO INCLUDE ALTERNATE STANDARD AND ADD CURRENT MATERIAL DESCRIPTION, REVISE ITEM'S #2, 8, 14, 16, 17, 19, 21, 23, 25, 26, & 28	EO-5200	MRG	-	-	2-7-23

<small>INCH</small> <small>(MILLIMETER)</small> INITIAL RELEASE DRFTR ANC 2-27-15 CHK'R APP E.O. NUMBER	TOLERANCES - MACHINING UNLESS OTHERWISE NOTED BREAK EDGES MACH. .006/.016 FINISH SURFACES 125 FRACTIONS ±1/64 DECIMALS 2 PL ±.06 3 PL ±.016 ANGLES ±1° MAT'L AS NOTED DESCR. 2 1/8" FLUSH MOUNT HYDRANT	THIRD ANGLE PROJECTION PURCH. FINISH REF. NO. SCALE 1:2 STK. NO. NUMBER A FH-570 SHEET 1 OF 1
---	--	---