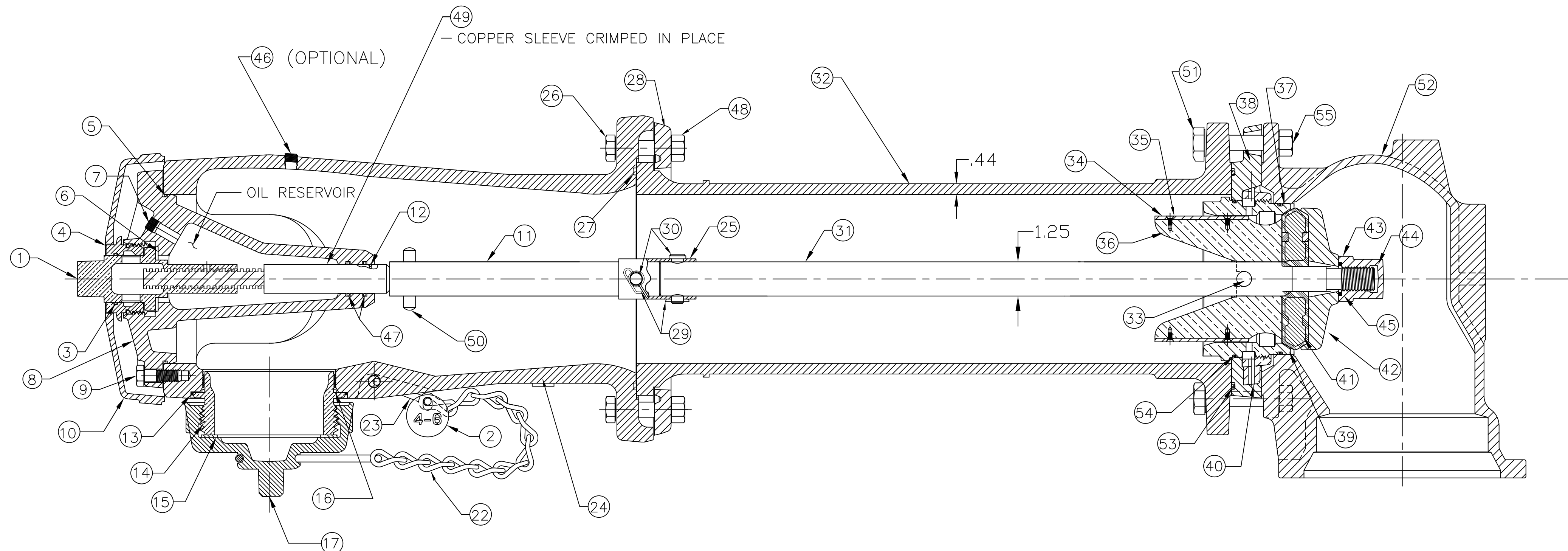
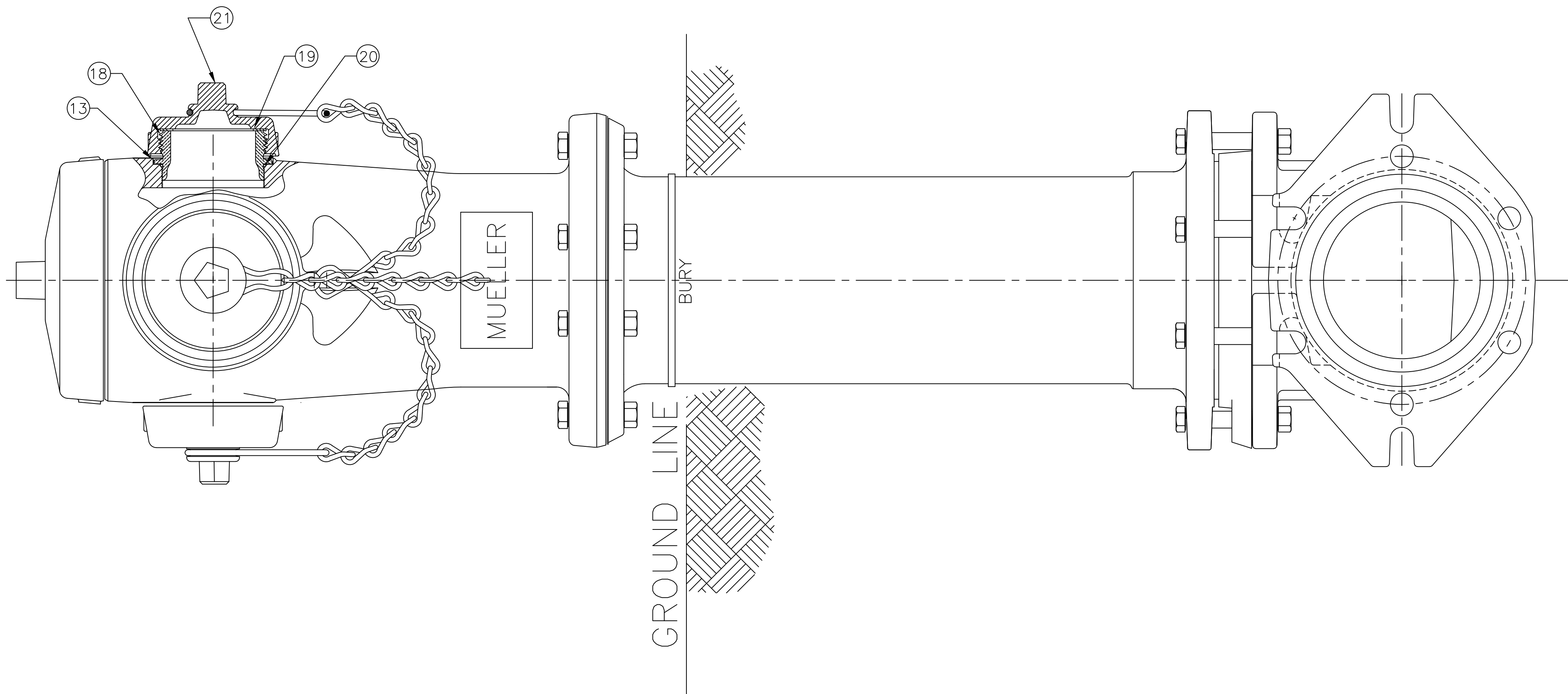


5 1/4" - A444 MODERN UNDERWRITERS FIRE HYDRANT WITH TWO HOSE NOZZLES (2019 DESIGN)



PARTS LIST						
ITEM	DESCRIPTION	REQ'D	MATERIAL	A.S.T.M.	CURRENT MATERIAL DESCRIPTION (A)	ALTERNATE STANDARD (A)
1	OPERATING NUT	1	BRONZE	B-62	C83600	B584 C87850 OR C87600
2	BURY TAG	1	STAINLESS STEEL	A-240	304	
3	HOLD DOWN NUT "O" RING	1	RUBBER	D-2000	R 34	
4	HOLD DOWN NUT	1	BRONZE	B-62	C83600	B584 C87850 OR C87600
5	BONNET "O" RING	1	RUBBER	D-2000	R 34	
6	ANTI-FRICTION WASHER	1	CELCON		GRADE M90-04	
7	OIL FILLER PLUG	1	BRASS	B-16	ALLOY 360	
8	HOUSING	1	CAST IRON	A-126	CLASS B	
9	HOUSING BOLT	6	STEEL	J429	ELECTRO GALV	
10	WETHER CAP	1	CAST IRON	A-126	CLASS B	
11	UPPER STEM	1	CARBON STEEL	A-567	GR. 1144T	
12	STEM "O" RING (UPPER)	1	RUBBER	D-2000	BUNA N	
13	NOZZLE LOCK	3	STAINLESS STEEL	A-276	305 OR 410	
14	PUMPER NOZZLE	1	BISMUTH BRASS	B-584	ALLOY C89833	B584 C87850 OR C87600
15	PUMPER NOZZLE CAP GASKET	1	RUBBER	D-2000	NEOPRENE	
16	PUMPER NOZZLE "O" RING	1	RUBBER	D-2000	BUNA N	
17	PUMPER NOZZLE CAP	1	CAST IRON	A-126	CLASS B	
18	HOSE NOZZLE	2	BISMUTH BRASS	B-584	ALLOY C89833	B584 C87850 OR C87600
19	HOSE NOZZLE CAP GASKET	2	RUBBER	D-2000	NEOPRENE	
20	HOSE NOZZLE "O" RING	2	RUBBER	D-2000	BUNA N	
21	HOSE NOZZLE CAP	2	CAST IRON	A-126	CLASS B	
22	CAP CHAIN	3	STEEL		ELECTRO GALV.	
23	CHAIN HOOK	1	STEEL		ELECTRO GALV.	
24	UPPER BARREL	1	CAST IRON	A-126	CLASS B	
25	TRAFFIC STEM COUPLING	1	STAINLESS STEEL	A-890	1.5% SILICON MAX.	
26	TRAFFIC FLANGE BOLT	8	STEEL	J429	ELECTRO GALV.	
27	TRAFFIC FLANGE O-RING	1	RUBBER	D-2000	BUNA N	
28	TRAFFIC FLANGE	1	CAST IRON	A-126	CLASS B	
29	REUSABLE COTTER PIN	2	STAINLESS STEEL	A-276	18-8	
30	CLEVIS PIN	2	STAINLESS STEEL	A-276	300 SERIES	
31	LOWER STEM	1	CARBON STEEL	A-567	GR. 1144T	
32	LOWER BARREL	1	CAST IRON	A-126	CLASS B	
33	STEM PIN	1	STAINLESS STEEL	A-276	300 SERIES	
34	DRAIN VALVE FACING	2	H.D. POLYETHELENE		LS 5660-00	
35	DRAIN VALVE FACING SCREW	4	STAINLESS STEEL	A-276	300 SERIES	
36	UPPER VALVE PLATE	1	BISMUTH BRASS	B-584	ALLOY C89833	B584 C87850 OR C87600
37	BOTTOM SEAT "O" RING	1	RUBBER	D-2000	BUNA A	
38	DRAIN RING HOUSING	1	CAST IRON	A-126	CLASS B	
39	SEAT RING	1	BISMUTH BRASS	B-584	ALLOY C89833	B584 C87850 OR C87600
40	DRAIN RING	1	BRONZE	B-62	ALLOY C83600	B584 C87850 OR C87600
41	MAIN VALVE	1	RUBBER	D-2000	NATURAL	
42	LOWER VALVE PLATE	1	CAST IRON	A-126	CLASS B	
43	LOCK WASHER	1	STAINLESS STEEL	A-276	304	
44	VALVE NUT	1	CAST IRON	A-126	CLASS B	
45	VALVE NUT SEAL	1	RUBBER		NATURAL	
46	PIPE PLUG	1				
47	HOUSING O-RING	2	RUBBER		BUNA A	
48	TRAFFIC FLANGE NUT	8	STEEL	A-563	ELECTRO GALV.	
49	SLEEVE	1	COPPER	B-75	ALLOY 122	
50	UPPER STEM PIN	1	STAINLESS STEEL	A-276	303	
51	HEX BOLT	6	STEEL	J429	ELECTRO GALV.	
52	SHOE	1	DUCTILE IRON	A-536	65-45-12	GR. 70-50-05
53	DRAIN RING HOUSING O-RING	1	RUBBER	D-2000	BUNA N	
54	TOP SEAT O-RING	1	RUBBER	D-2000	BUNA N	
55	HEX NUT	6	STEEL	A-563	ELECTRO GALV.	
56						
57						

SEE CAT. RECORD FOR RESPECTIVE PARTS OR SUB. ASS'YS
* OPTIONAL

DWG. FH-609

REV.	DESCRIPTION	REF.	DRWTR	CHKR	APP	DATE
B	ADD ALTERNATE STANDARD COLUMN & CURRENT MATERIAL DESCRIPTION HEADER	E05200-1	MRG			2-20-23
A	UPDATE TO 2019 HYDRANT REFRESH	E04763	ANC	JBC	JBC	8-24-20

(MILLIMETER) INCH INITIAL RELEASE DRFTTR ANC 8-13-15 CHKTR CJD 8-13-15 APP CJD 8-13-15 E.O. NUMBER		TOLERANCES - MACHINING UNLESS OTHERWISE NOTED BREAK EDGES FINISH SURFACES MACH. .006/.016 125 FRACTIONS ±1/64 DECIMALS 2 PL ±.025 3 PL ±.016 ANGLES ±1°		THIRD ANGLE PROJECTION PURCH. FINISH REF. NO. SCALE N.T.S. STK. NO.	
MAT'L. SEE TABLE DESCR. A-444 5-1/4 MODERN (2019 DESIGN) UNDERWRITER ASSEMBLY		REVISION B		NUMBER FH-609 SHEET 1 OF 1	